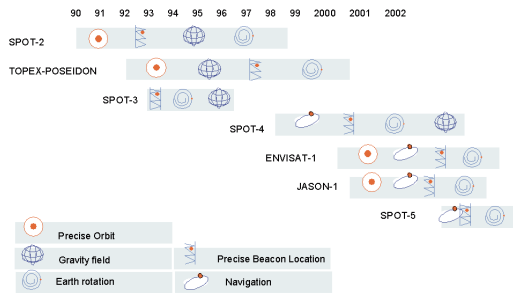


THE DORIS PILOT EXPERIMENT

Carey Noll, John Ries, Laurent Soudarin, Gilles Tavernier, Pascal Willis

The DORIS System

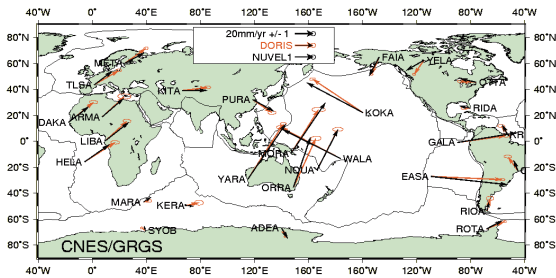


DORIS Missions (decided)

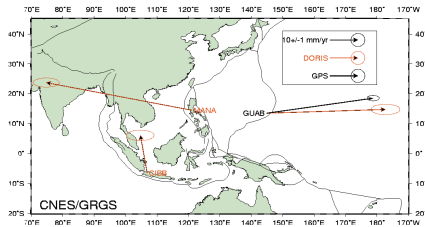
DORIS system evolutions and perspectives

- ↓ DIODE navigator
 - SPOT4 (March 1998)
 - JASON-1, ENVISAT, SPOT5 ...
- ↓ 2nd generation receivers
 - dual channel
 - absolute phase measurement
 - miniaturized (JASON-1, SPOT5 ...)
 - DIODE
- ↓ 3rd generation ground beacons
 - shifted frequency
 - DORIS message & modulation on 2GHz channel

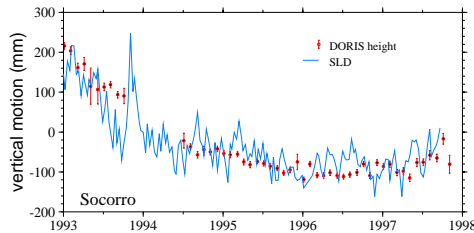
Some results



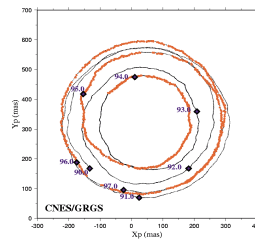
DORIS and Nuvel-1 velocities



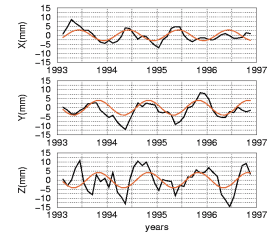
Velocities of Manille, Cbinong and Guam Stations relative to the Eurasian and Philippines plates



Time series of Sea Level Differences and monthly DORIS heights



Polar motion derived from DORIS data



Geocenter coordinates derived from DORIS data

Further information

Contacts

- ↓ Gilles Tavernier
 - Gilles.Tavernier@cnes.fr
- ↓ Carey Noll
 - noll@cddis.gsfc.nasa.gov
- ↓ John Ries
 - ries@csr.utexas.edu
- ↓ DORIS Mail : http://lareg.ensg.ign.fr/DORIS/doris_mail.html
- CNES
 - DSO/ED/AL/MA - Bpi 2002
 - 18, avenue Edouard Belin
 - 31401 TOULOUSE CEDEX 4
 - FRANCE
- ↓ Laurent Soudarin
 - Laurent.Soudarin@cls.fr
- ↓ Pascal Willis
 - pascal.willis@ensg.ign.fr