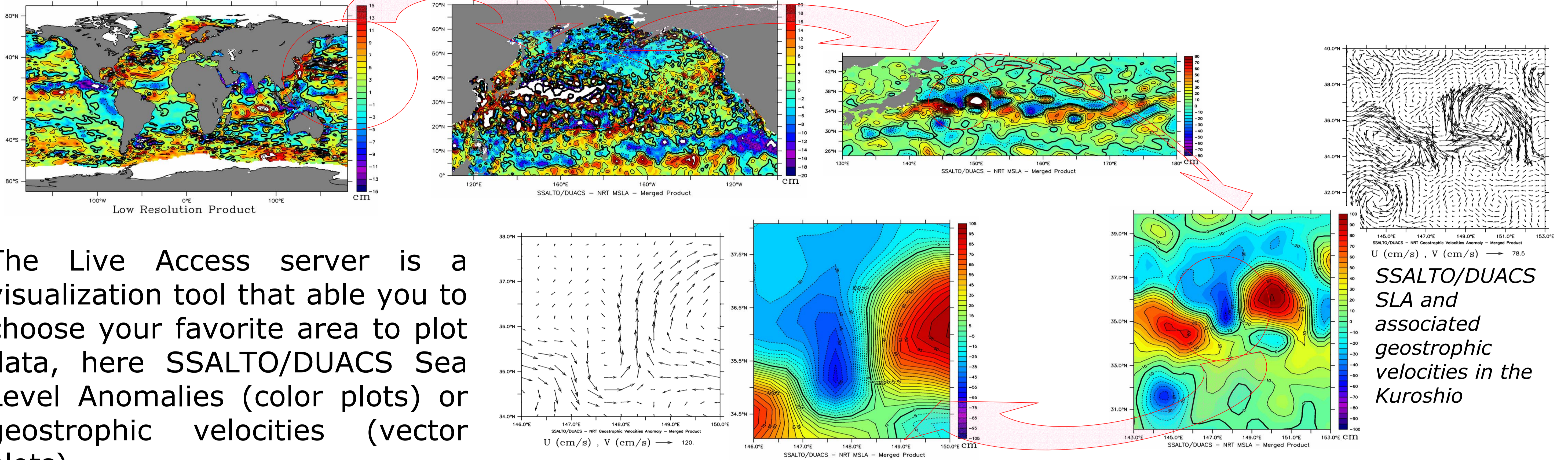


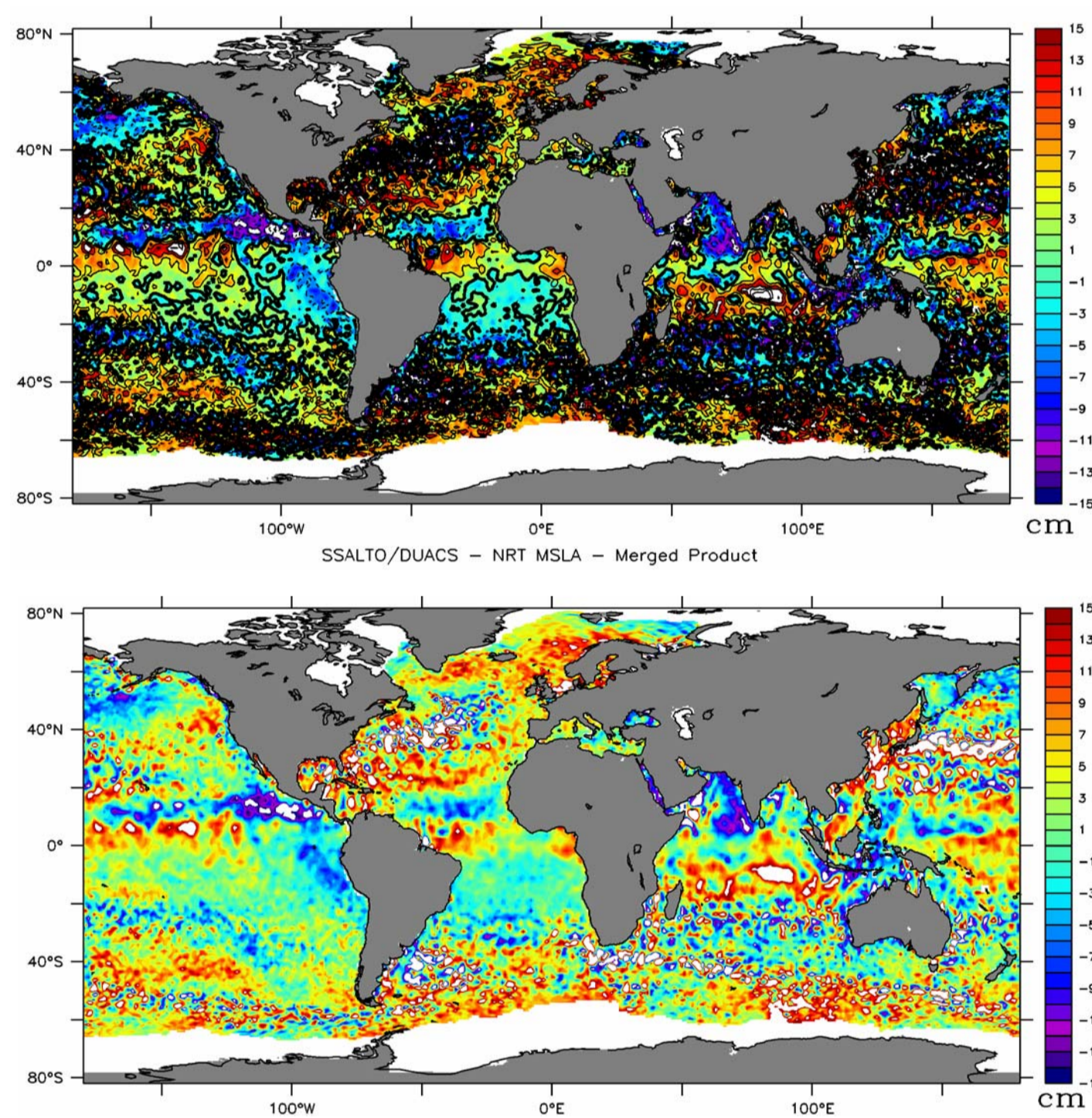
Plot maps, at global, regional or local scale



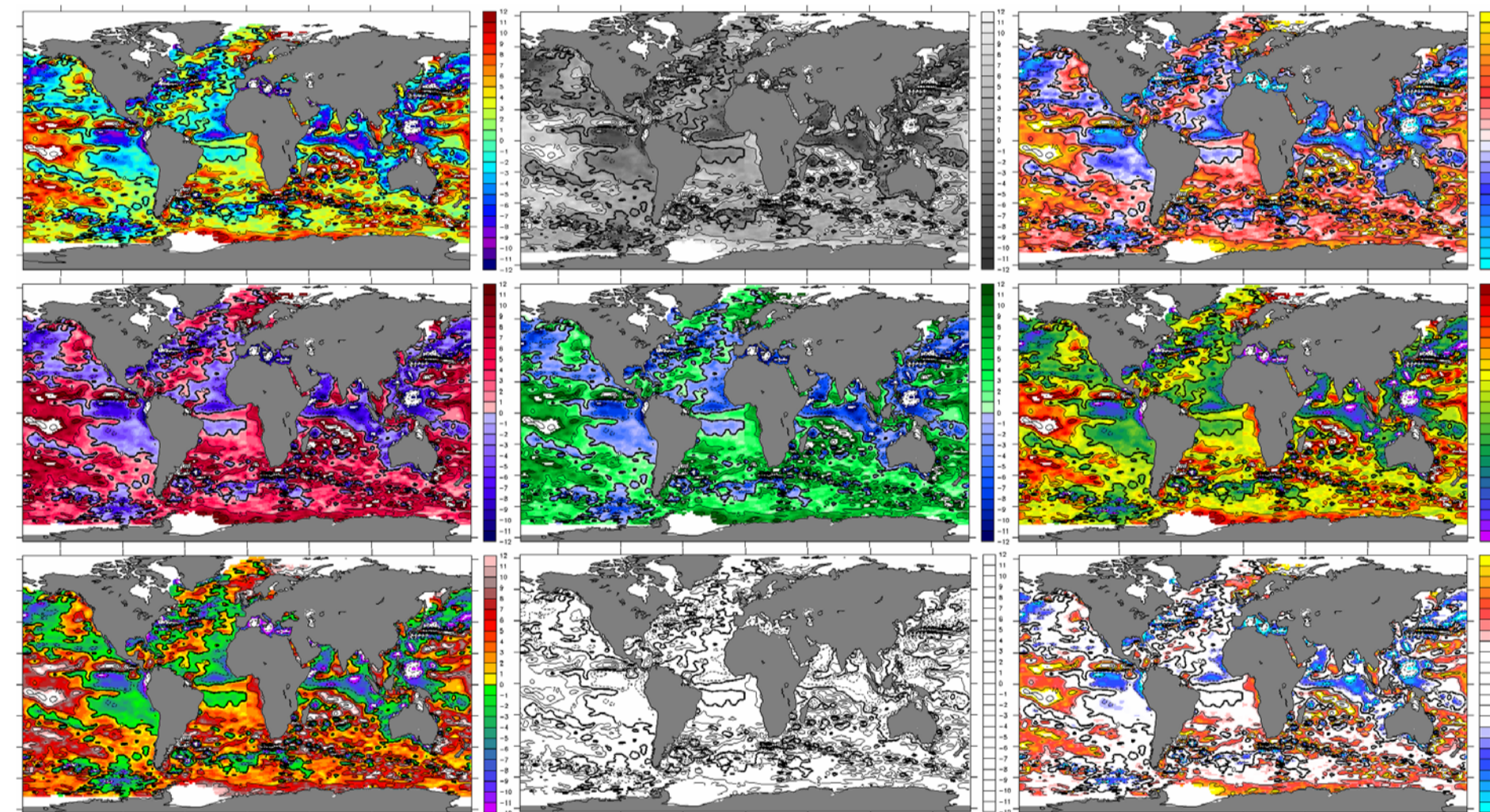
The Live Access server is a visualization tool that able you to choose your favorite area to plot data, here SSALTO/DUACS Sea Level Anomalies (color plots) or geostrophic velocities (vector plots)

SSALTO/DUACS SLA and associated geostrophic velocities in the Kuroshio

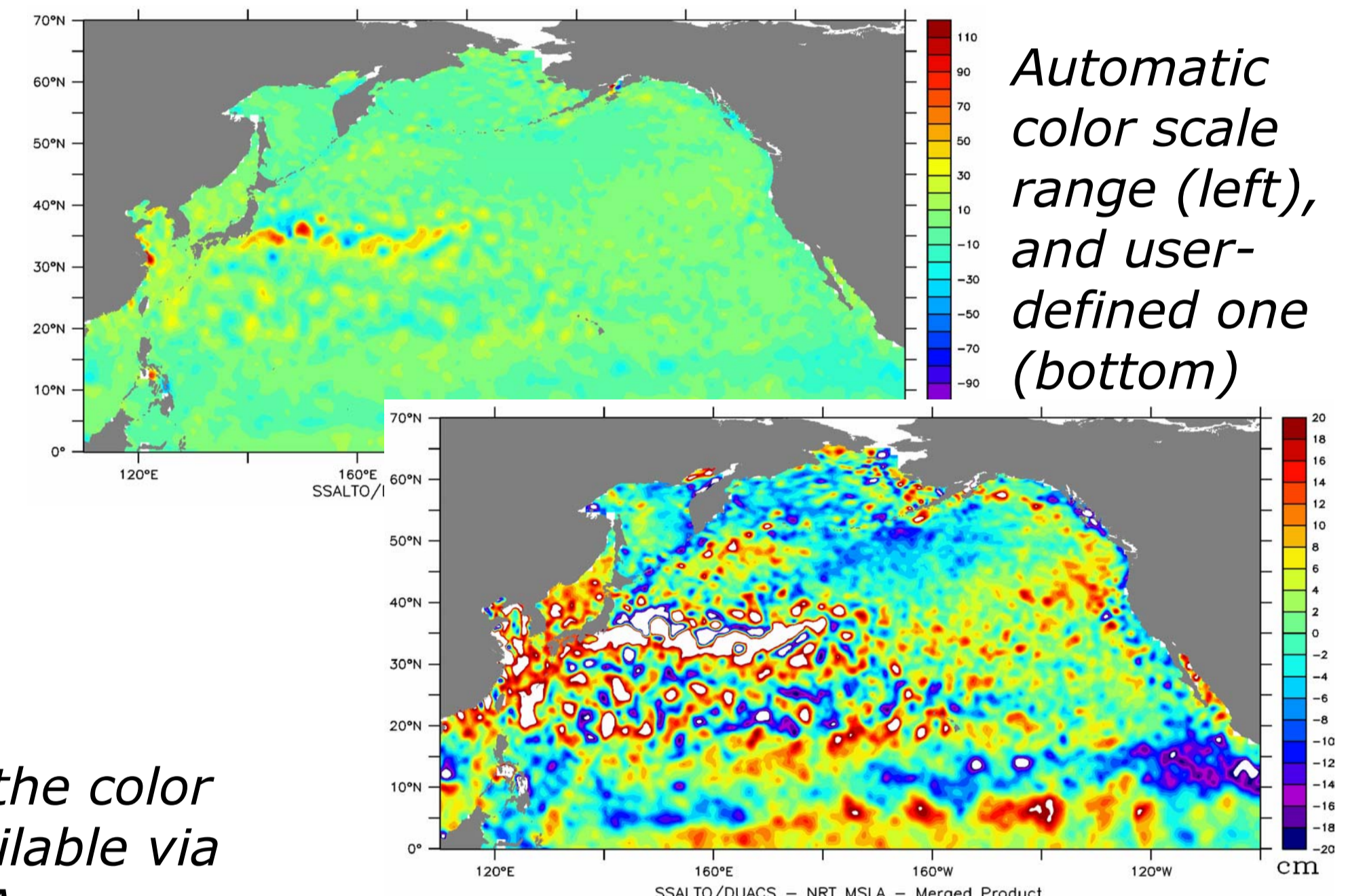
Choose scale and colors



You can choose your color scale, its parameters (minimum, maximum, interval), whether or not you want contours, etc.

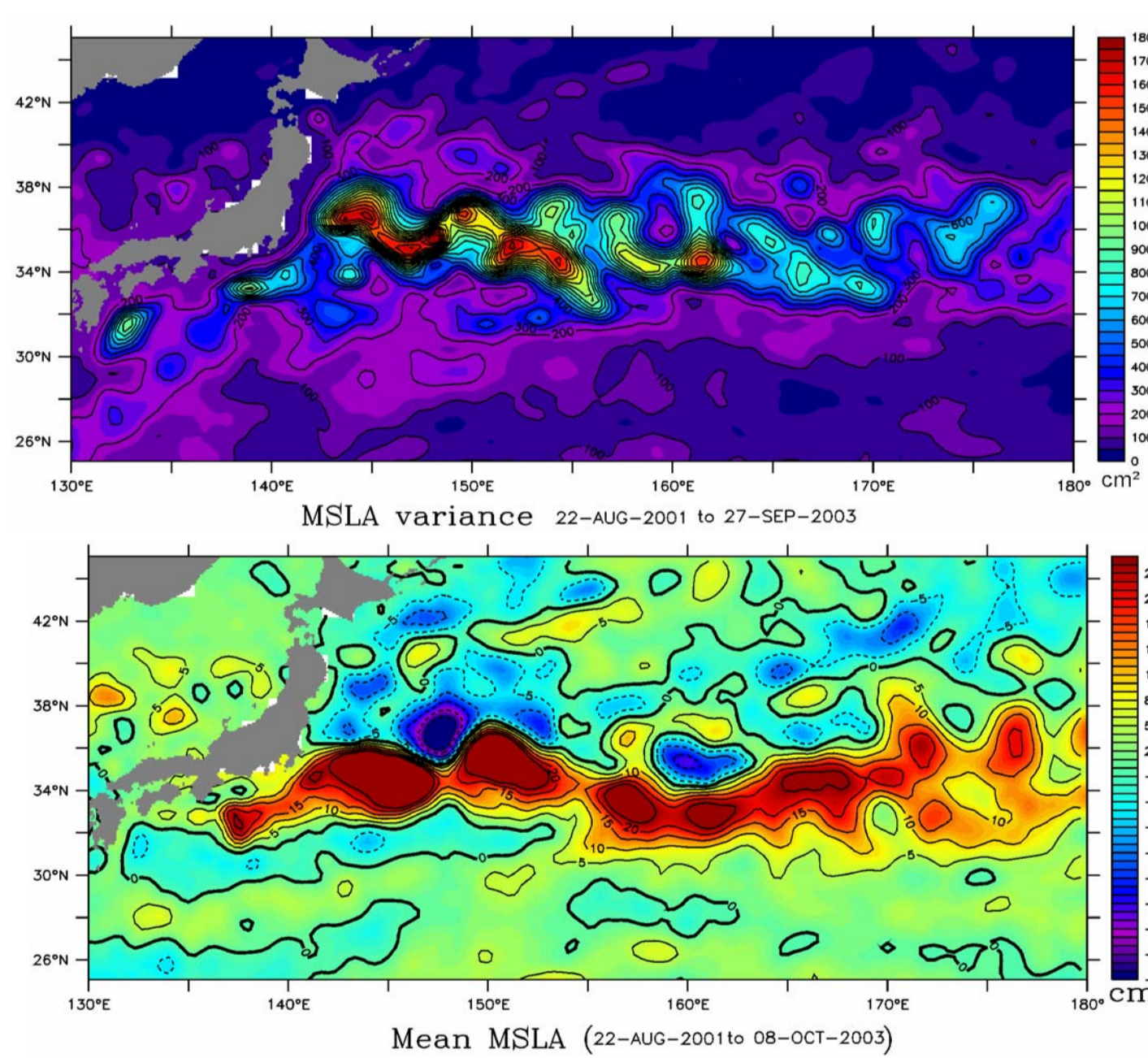


Some of the color scale available via the Live Access Serve (SSALTO/DUACS Low resolution data on February 19, 2003)



Automatic color scale range (left), and user-defined one (bottom)

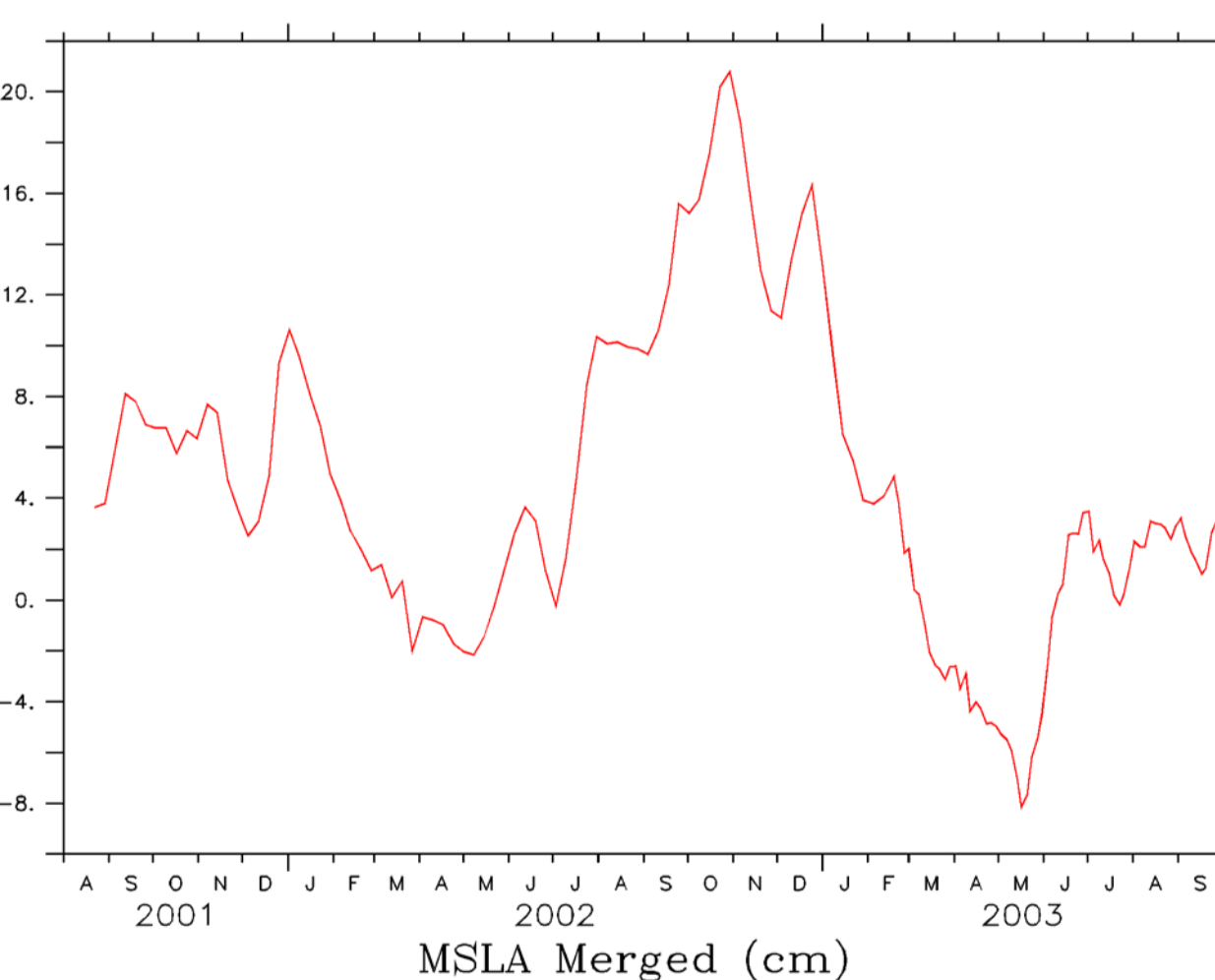
Variance, averages, longitude-time diagrams...



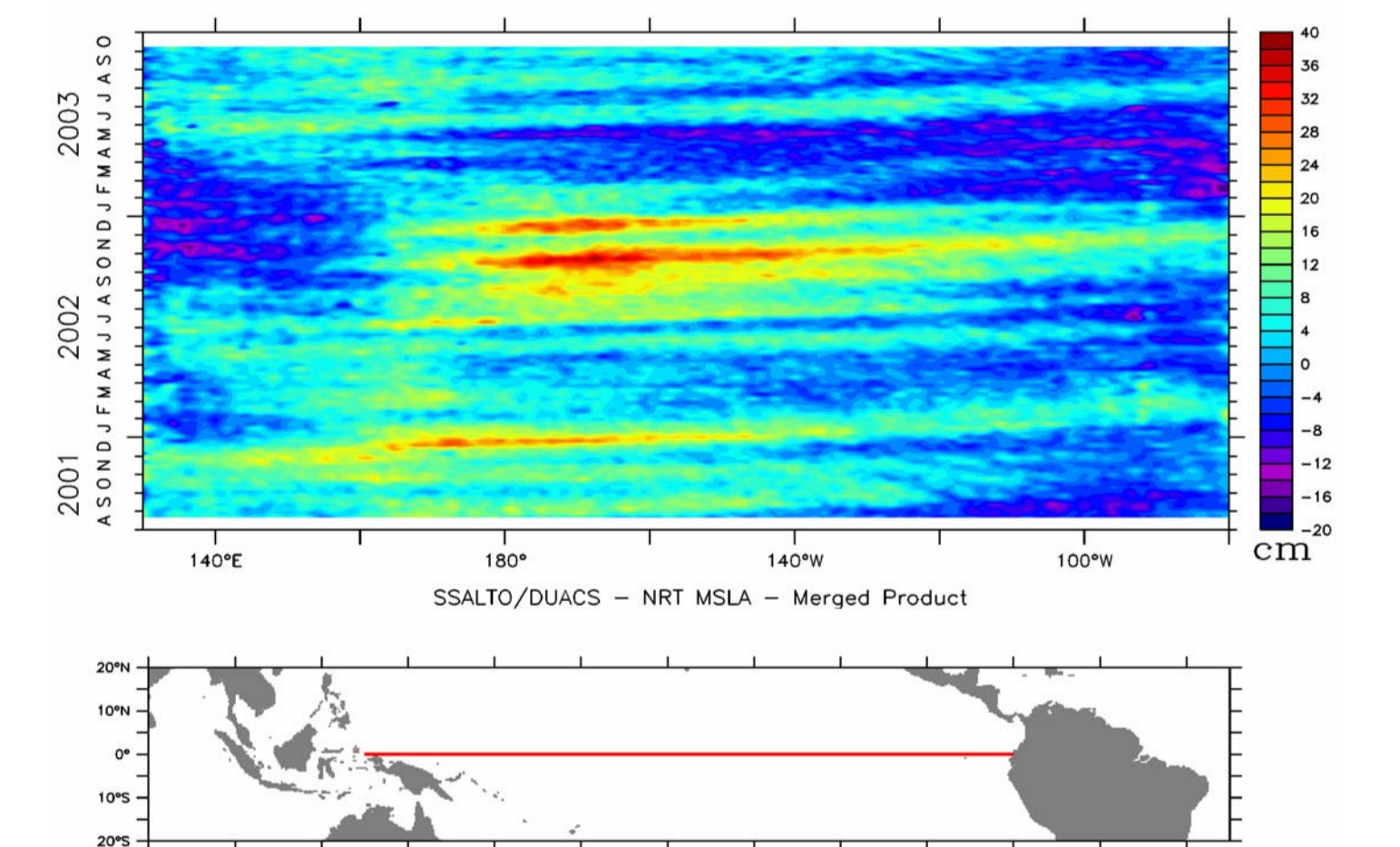
SLA variance in the Kuroshio region over the two years of available SSALTO/DUACS data

Mean of SLA over more than 2 years

Moreover, you can also compute and plot averages (time or spatial means), variance, minima, maxima.



Mean SLA variations over the Nino3.4 area



Hovmoller (longitude-time) diagram over the Equatorial Pacific

Retrieve the data

Behind the Live Access Server, there is in fact a database, called "OpendDap", available at <http://opendap.aviso.oceanobs.com/>.

OpenDap (or DODS: Distributed Oceanographic Data System) is a framework that simplifies all aspects of scientific data networking. OpenDap provides tools for making local data accessible to remote locations regardless of local storage format. OpenDap also provides tools for transforming existing applications into OpenDap clients (i.e., enabling them to remotely access OpenDap served data).

<http://las.aviso.oceanobs.com>