



COASTAL ALTIMETRY AT THE CENTRE OF TOPOGRAPHIC STUDIES OF THE OCEANS AND HYDROSPHERE (CTOH)



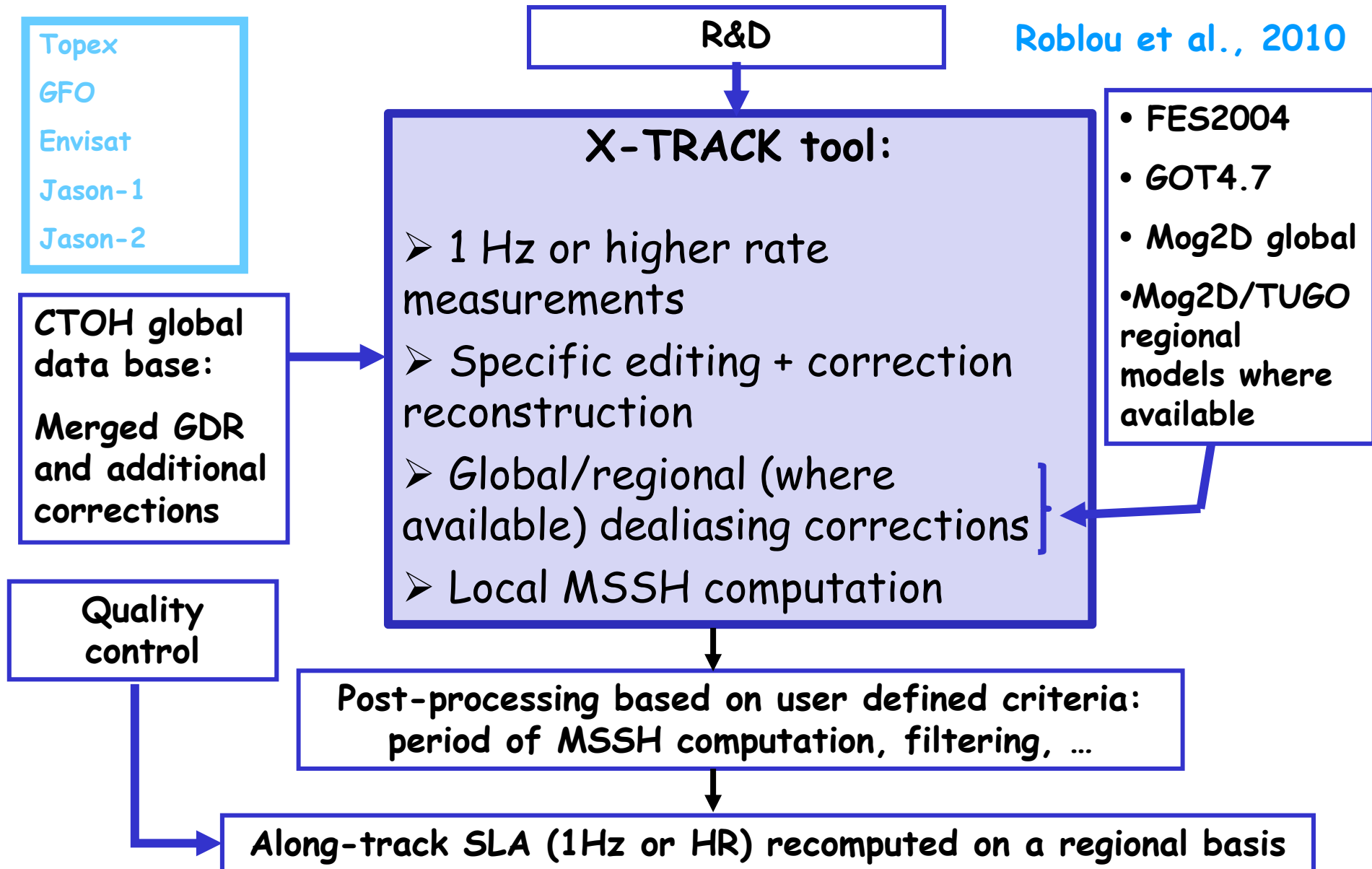
Florence Birol, Caroline Delebecque, Laurent Roblou, Sara Fleury, Rosemary Morrow, Fernando Niño and Guillaume Pernot

<http://ctoh.legos.obs-mip.fr/>

CTOH: French altimetric data service

- 1) maintain and distribute homogeneous altimetric data bases over all surfaces
- 2) help scientific users to develop new altimetry applications,
- 3) contributes to the processing and management of altimetric data for "emerging" research domains,
- 4) DEVELOP AND DISTRIBUTE REGIONAL ALTIMETRY PRODUCTS FOR COASTAL APPLICATIONS

Roblou et al., 2010





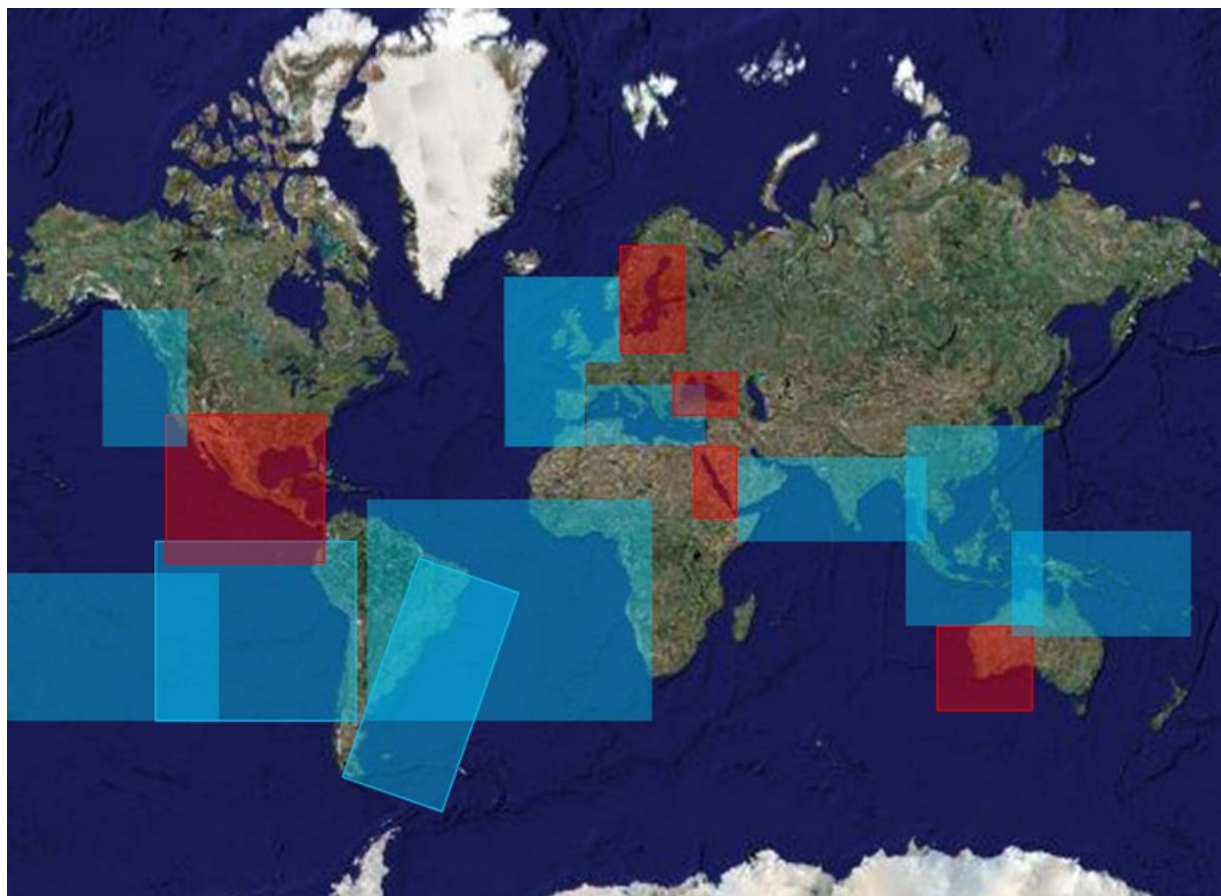
CTOH regional products



Already distributed:

- 1 Hz alongtrack products, Netcdf format:
 - SLA along a nominal ground-track,
 - MSSH consistent with SLA
 - geophysical (tidal and DAC separately) corrections included
- 12 different regions available
- Satellite missions (**homogeneous processing**):
 - T/P, Jason-1, T/P & Jason-1 combined,
 - Envisat and GFO (**Western Tropical Pacific, the North Indian Ocean and the North East Atlantic for the moment**)
 - **Jason-2 available soon (work on the editing underway)**
- For each region and each mission (4 data sets):
 - corrected with FES2004 or GOT4.7 (if no regional tidal model available)
 - alongtrack filtered and non-filtered SLA

<http://ctoh.legos.obs-mip.fr/products/coastal-products/>



Available
via ftp



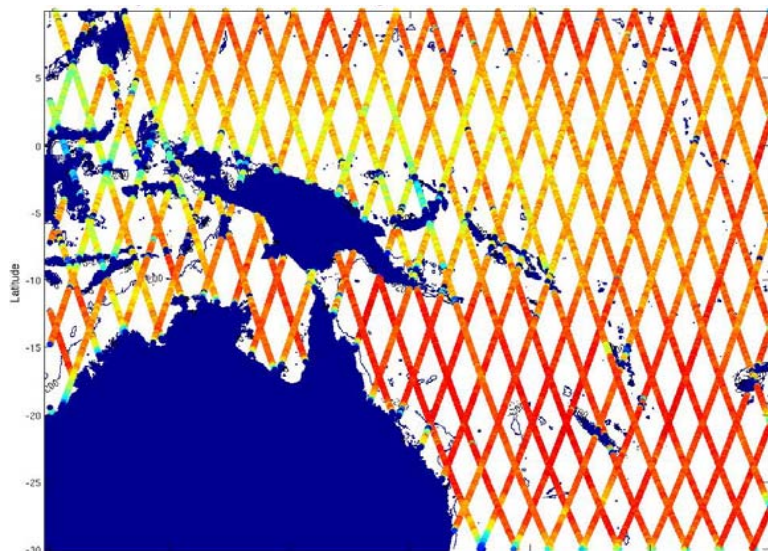
Ongoing
Processing

~ 50 scientific users (half from Europe,
half from Asia and America)
→ Feedback on the product quality

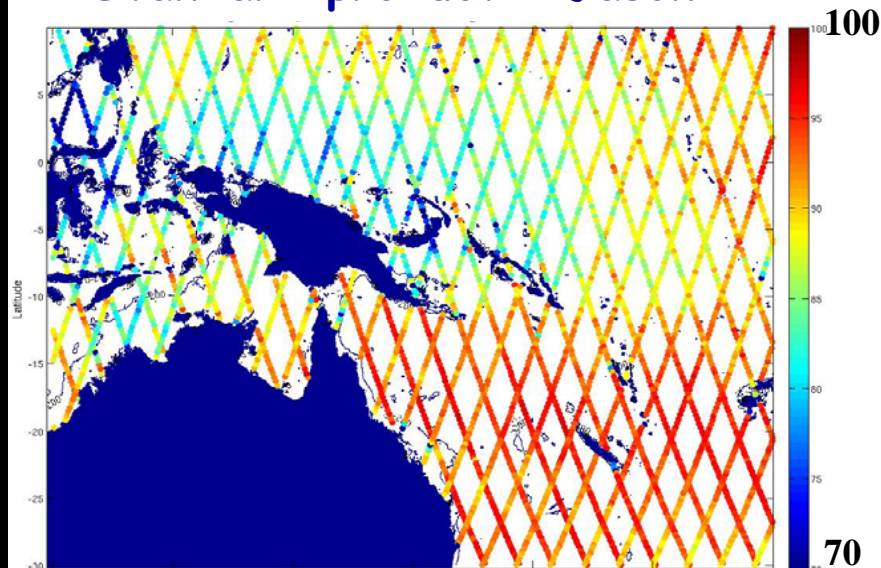
CTOH regional products: Example of the Equatorial Western Pacific Ocean

% of available data

CTOH - Jason 1

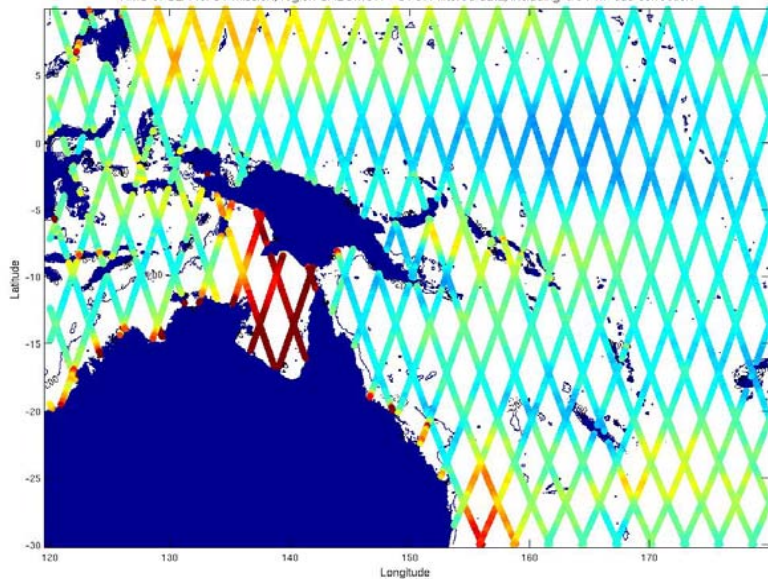


Standard product - Jason1

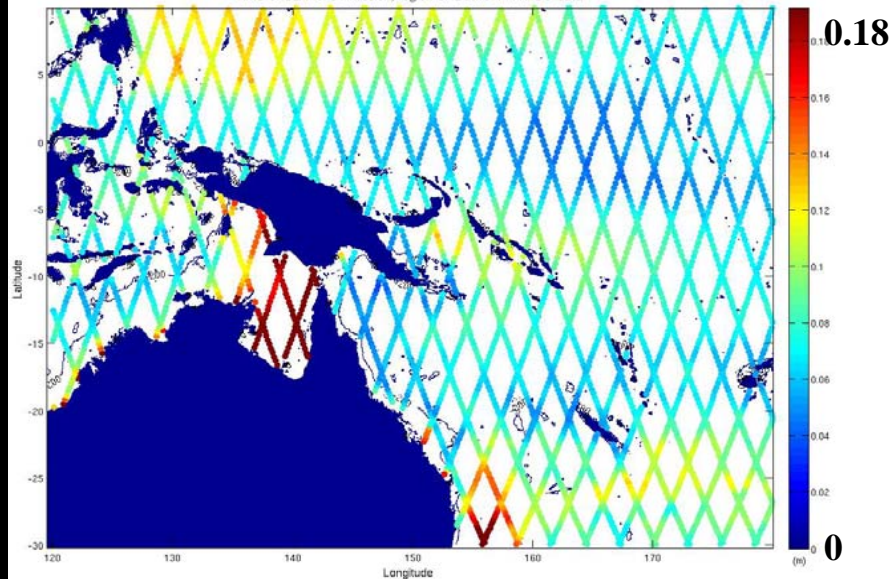


RMS(SLA) in m

RMS of SLA for J1 mission, region SALOMON - CTOH filtered data, including GOT4.7 tide correction



RMS of SLA for J1 mission, region SALOMON - AVISO data

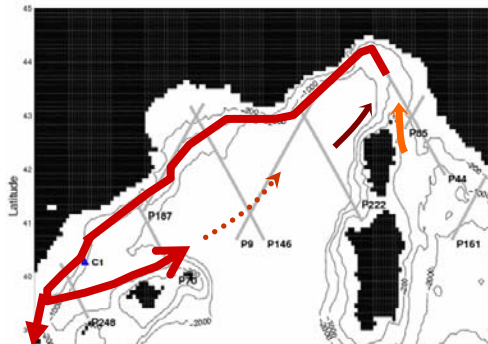


Spatio-temporal structure of the LPC Current (NW Mediterranean Sea)

Geostrophic velocity anomalies from 15 years of T/P and Jason-1 1 Hz data

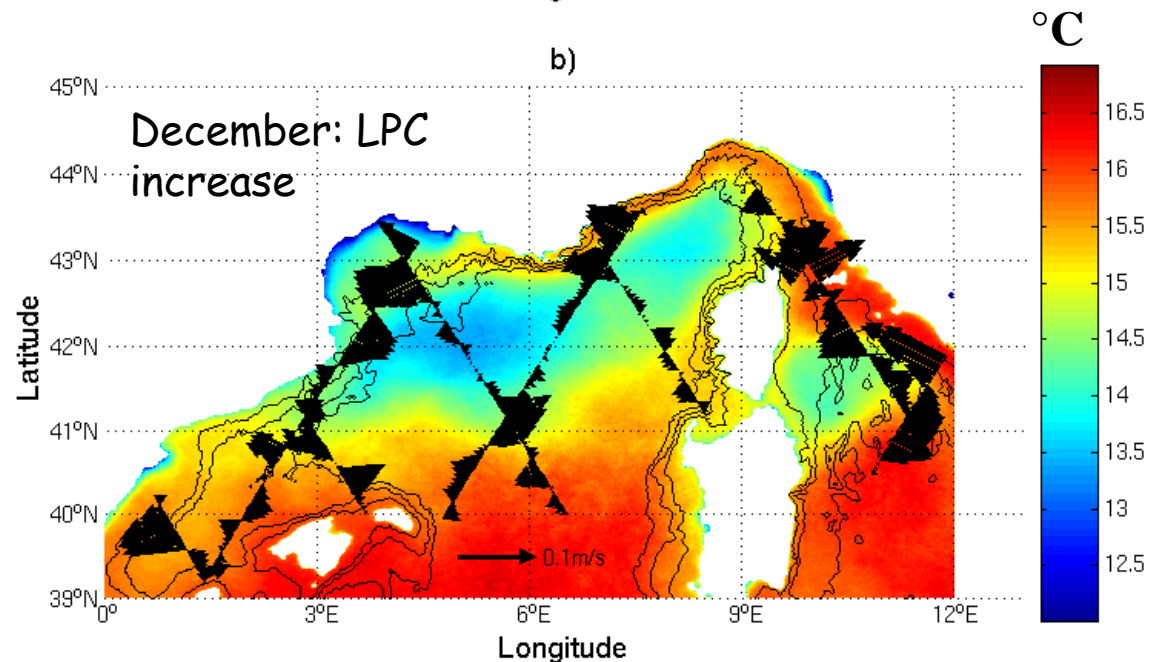
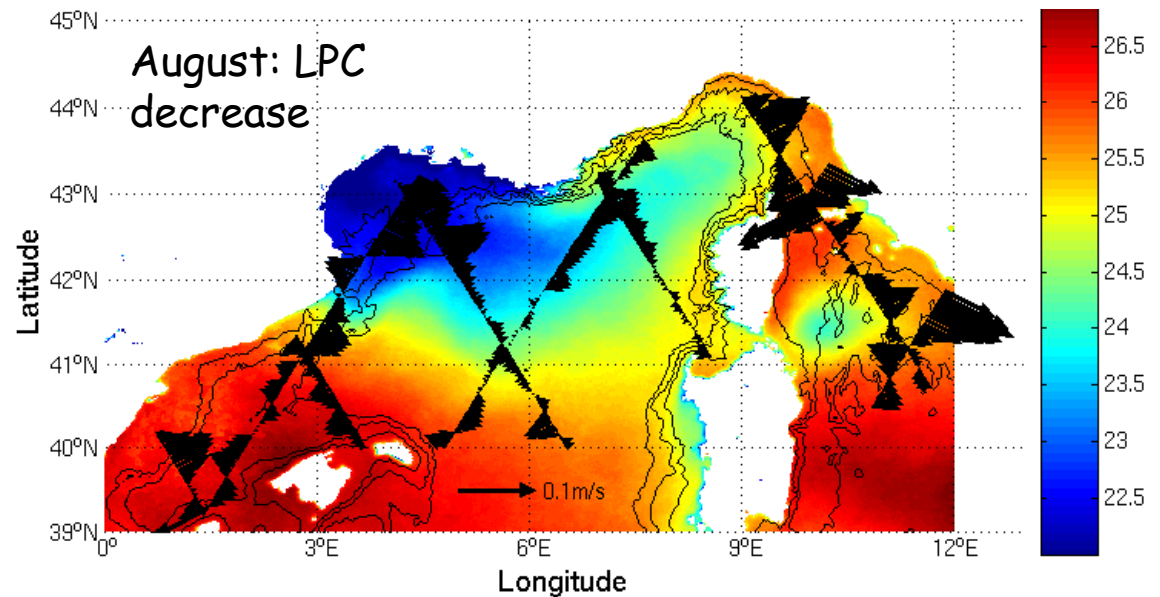
- Monthly climatology of:
- Sea Surface Temperature
 - Current anomalies (altimetry)

LPC Current circulation



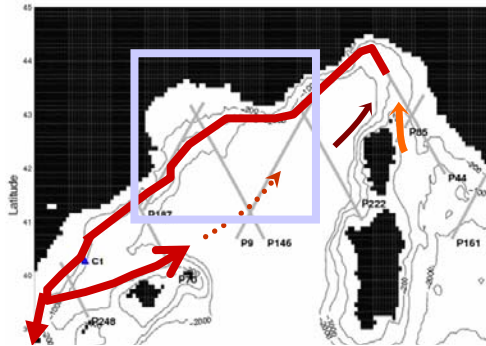
From Birol et al., 2010

Also posters by Leger et al. and Ayoub et al.



Perspective: High rate SLA product

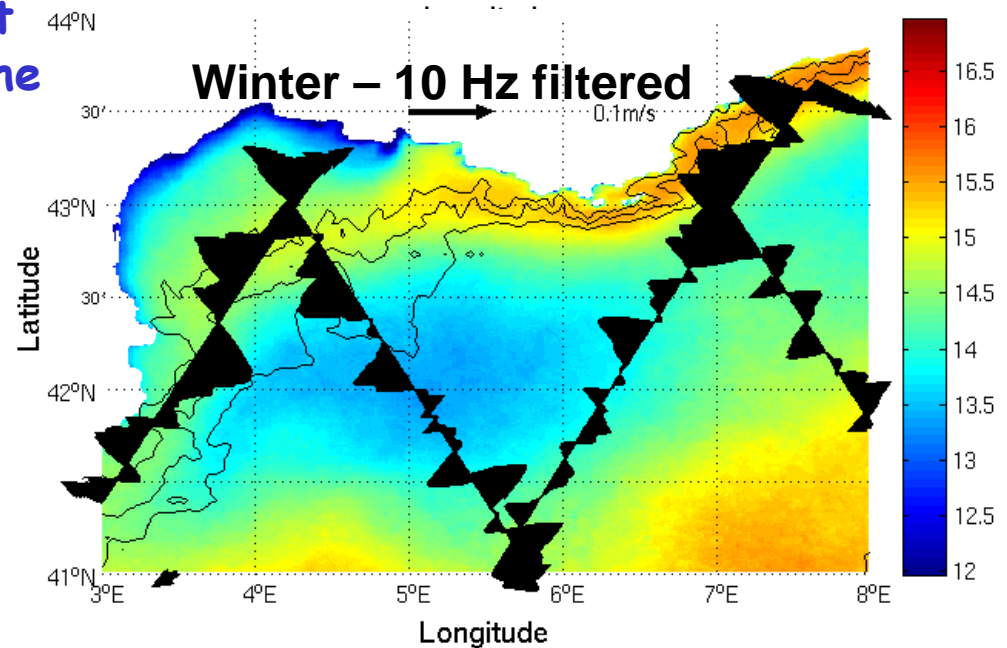
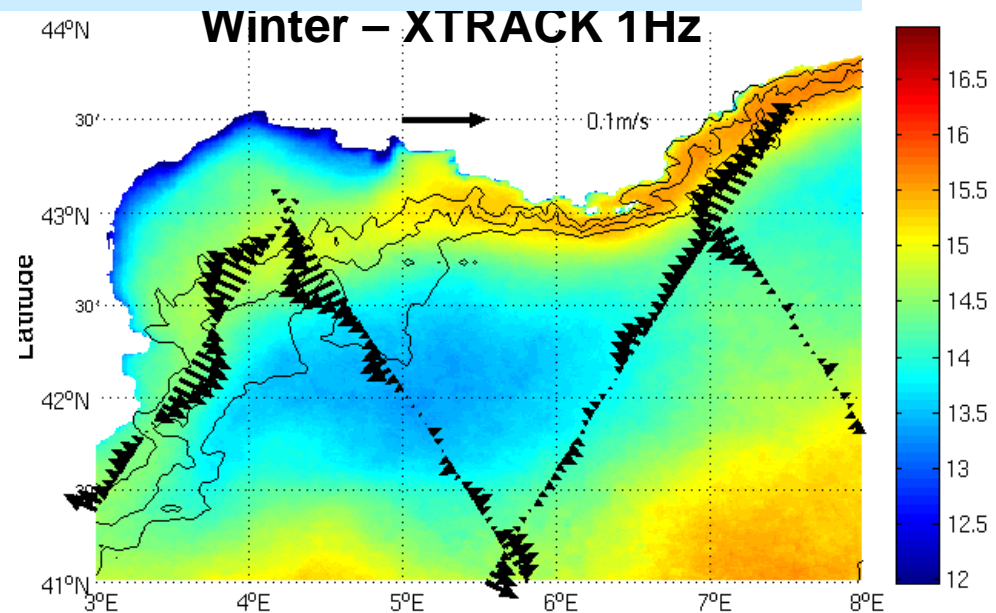
LPC Current circulation



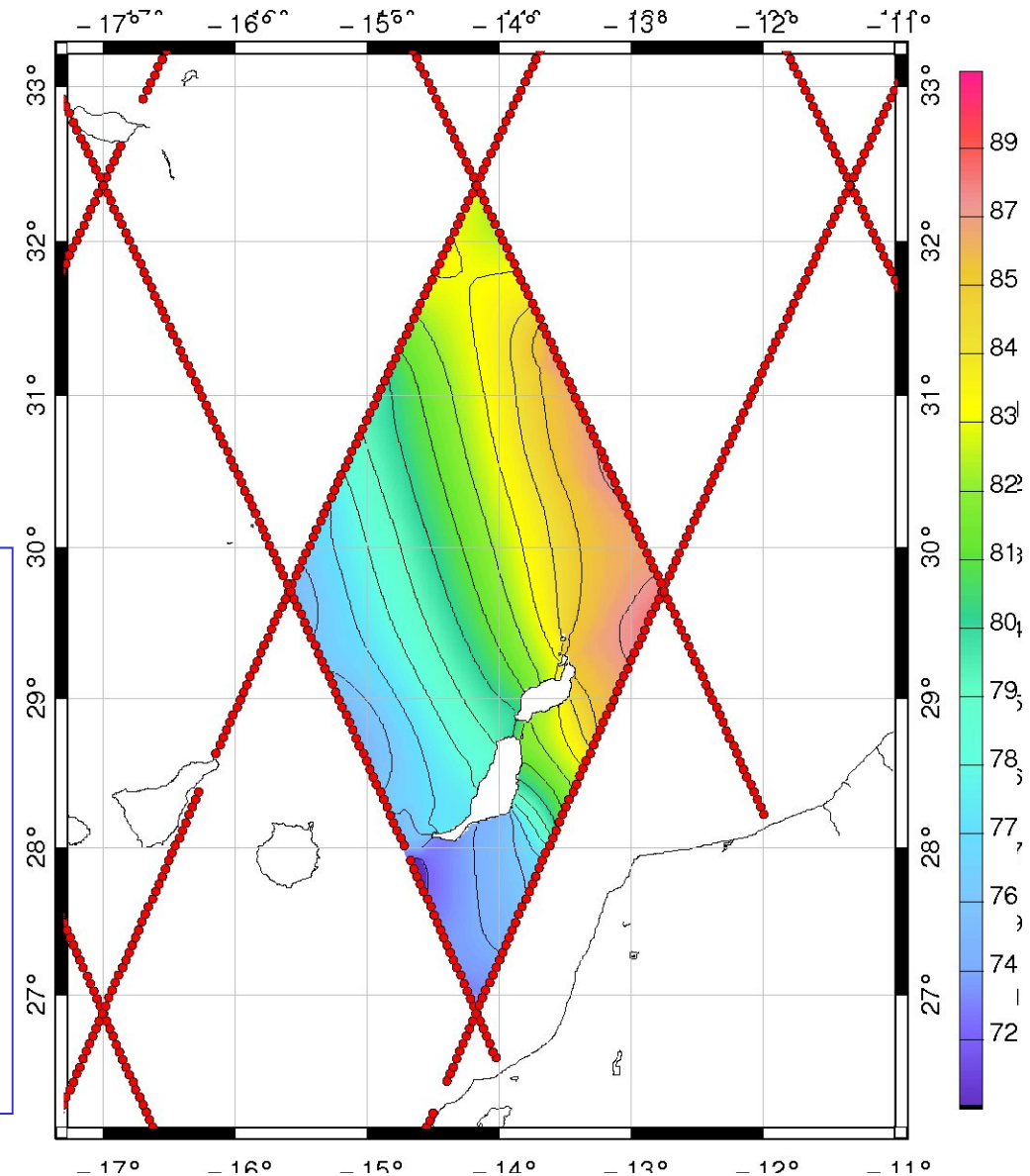
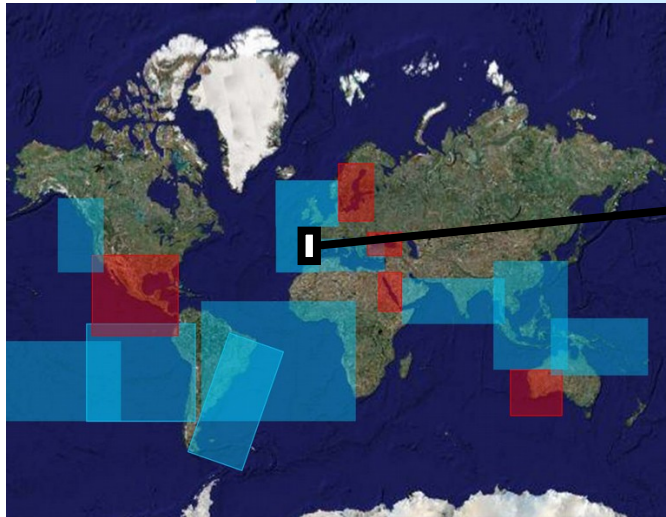
Monthly climatology of:

- SST (1998-2007)
- Cross-track geostrophic current anomalies (T/P & Jason-1 over the period 1993-2007)

- Amplitude of the seasonal variations increased
- More information close to the coast
- Smaller scale structures



Perspective: Regional product of tidal harmonic constituents derived from XTRACK alongtrack SLA

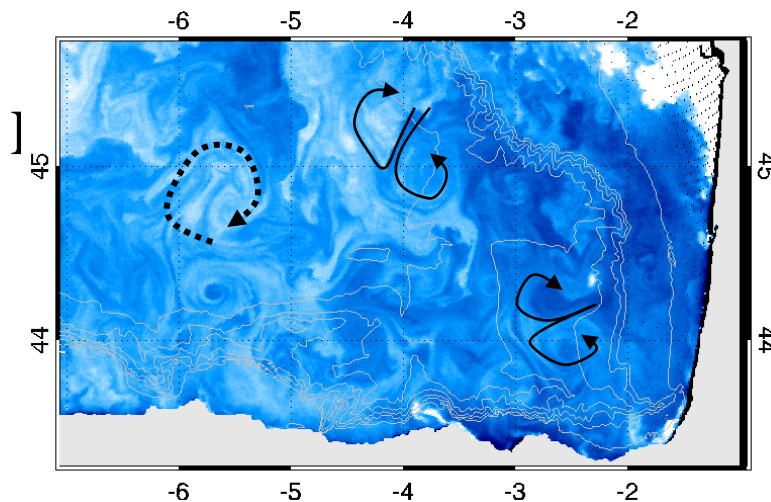


Along-track harmonic analysis computed from Topex-Poseidon/Jason series

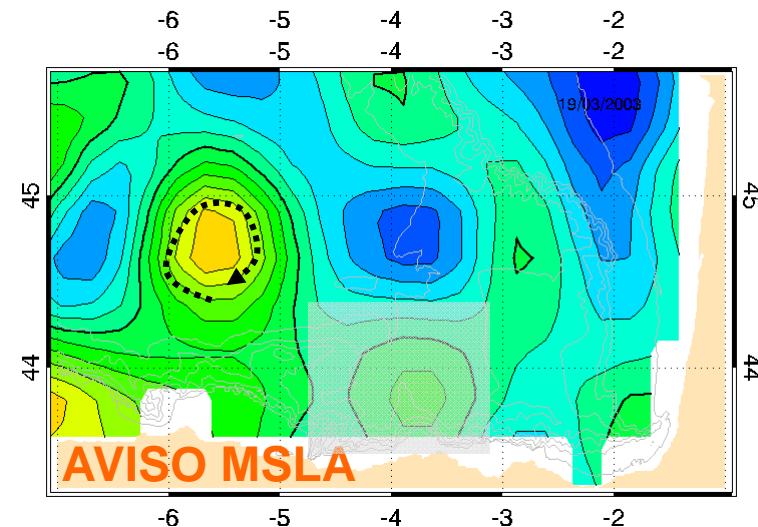
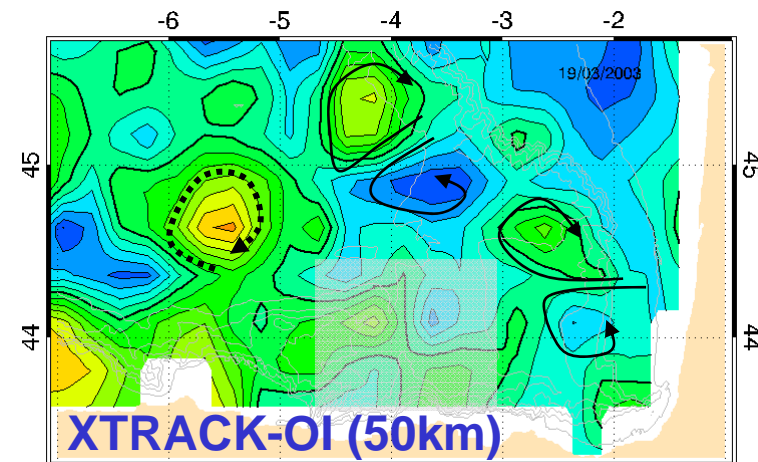
- ⇒ Along-track amplitude, phase and error for different tidal constituents
- ⇒ Local tidal modeling/assimilation in coastal and shelf seas

An example of multi-sensor comparison

- Satellite imagery may provide punctual information on fine scale dynamics



- Finer-scale structures in regional maps
 - Steeper SLA gradients
 - Dipoles visible near the slope



<http://ctoh.legos.obs-mip.fr/>

DATA CATALOGUE:

- **Along-track data**
- **Coastal products**
- **Access to Hydroweb data base**
- **Global surface current data product**
- **Submesoscale filaments (FSLE or Finite Size Lyapunov Exponent)**

Any request? \Rightarrow ctoh_products@legos.obs-mip.fr