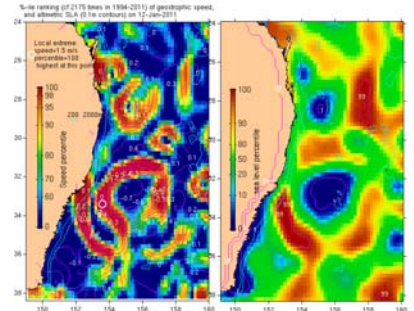
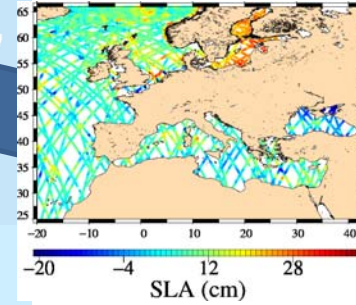
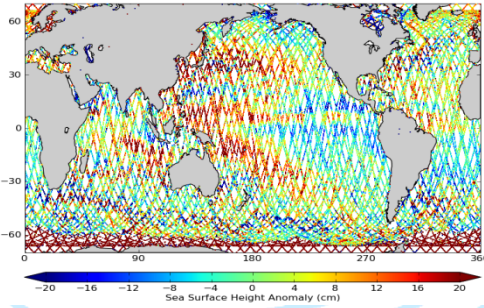
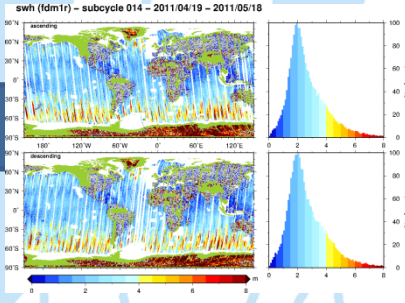


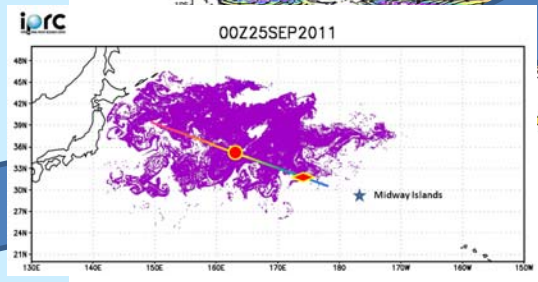
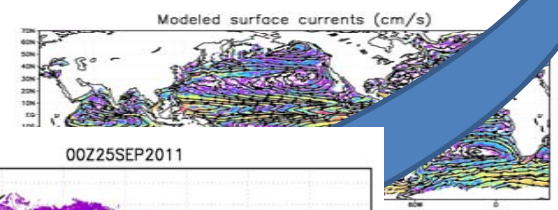
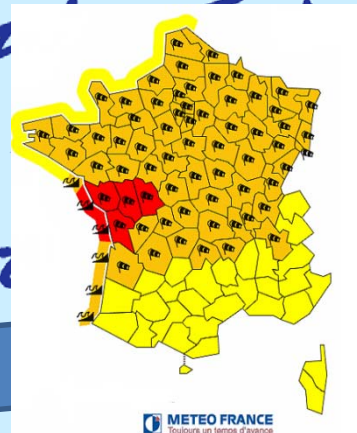
Near real time products to applications



an Surface
ray
nce

Team

19-21 Oct



Processing to SWH, WSP, SSH

Connection to forecast systems

Application to monitoring and significant events

Javier Zavala-Garay **Evaluation of subsurface projection of satellite information in a variational data assimilation system for the Mid-Atlantic Bigh**

Charon Birkett **Near Real Time Monitoring of Global Reservoirs and Lakes**

Pierre Brasseur **Advanced Altimeter Data Assimilation for Physical Ocean Prediction and Ecosystem Monitoring**

Shailen Desai **Dense, High-Accuracy Sea Surface Height Data in Near-Real-Time from the Jason-1, Jason-2, and ENVISAT Missions**

David Griffin **Real-time oceanography and extreme events**

Christian Jayles **Another Improved DORIS/DIODE Software for Jason-2 OGDR**

Sylvie Labroue **Level-3 PISTACH Products for Coastal Studies**

Sylvie Labroue **Updates of the SSALTO DUACS Near Real Time System: Focus on Short Latency Data Products**

Jean-Michel Lefevre **Operational Forecasting of Wind-Generated Waves by Tropical Cyclones and Altimetry**

Nikolai Maximenko **Modeling distribution of marine debris before and after tsunami of March 11, 2011**

Francoise Mertz

Marie-Isabelle Pujol,

Natural Extreme Events Observed by Altimetry A Kerguelen regional Sea Level product to support the KEOPS2 experiment

Walter Smith **Near-Real-Time Wave, Wind, and Sea Surface Height from CryoSat FDM/L1B Data**

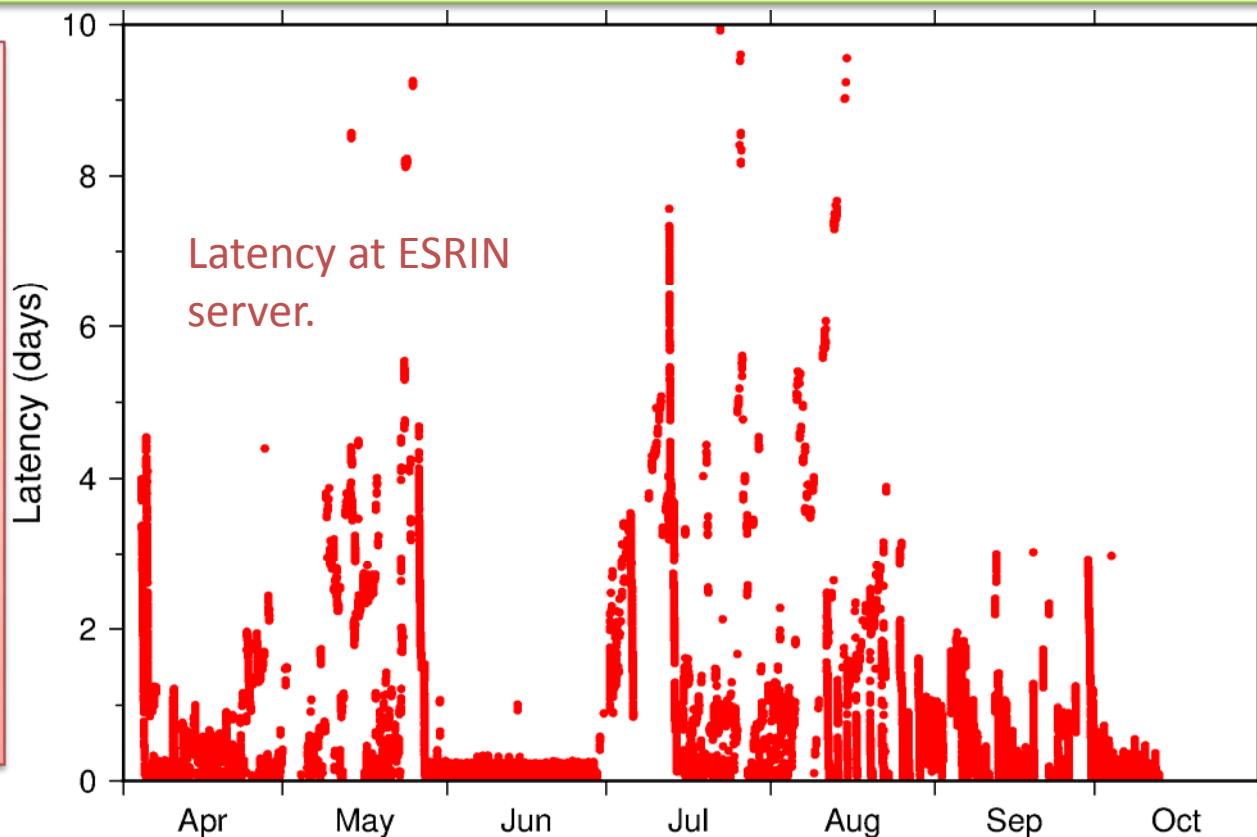
Javier Zavala-Garay **Evaluation of subsurface projection of satellite information in a variational data assimilation system for the Mid-Atlantic Bigh**

Speed & Latency

Every hour, we search ESA ESRIN ftp site for new FDM L1B data. From ESRIN ftp to NOAA N-AWIPS, our process takes about 2 minutes, end-to-end. Thus latency is determined on the ESA side.

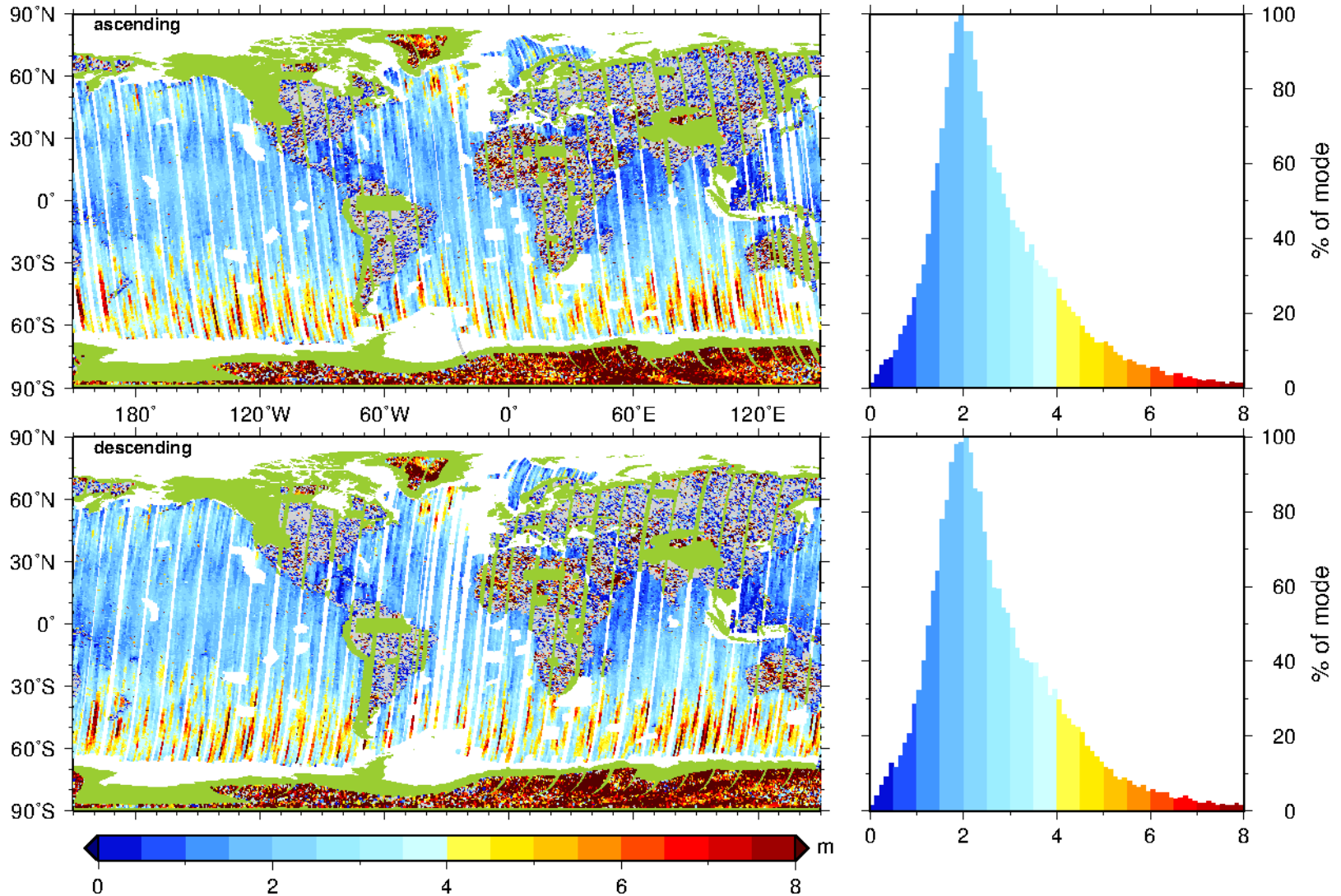
Until recently, less than 25% of FDM L1B files were available within 3 hours of real time. This has now improved.

October 6-13:
34% within 3 hours;
77% within 6 hours;
all within 1 day.



CS2 Wave Heights

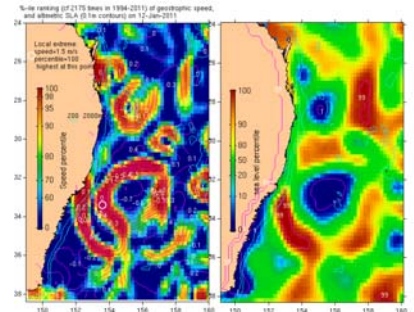
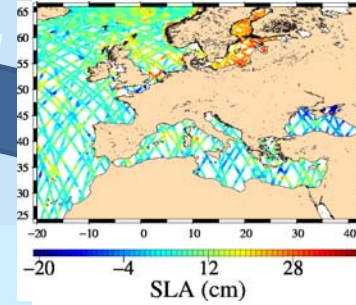
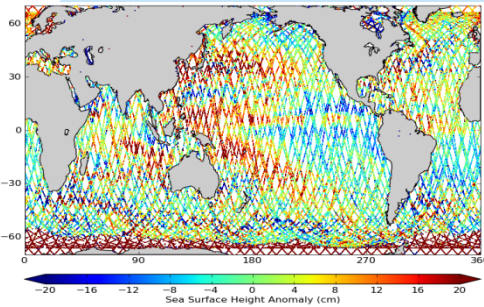
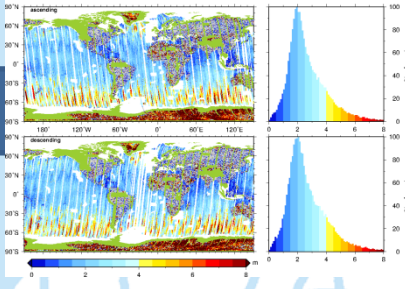
swh (fdm1r) – subcycle 014 – 2011/04/19 – 2011/05/18



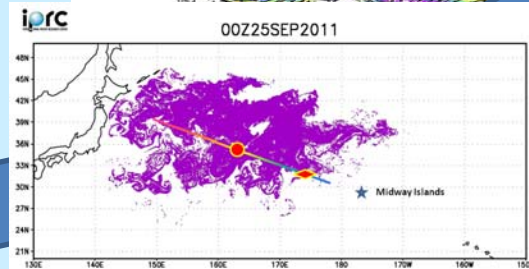
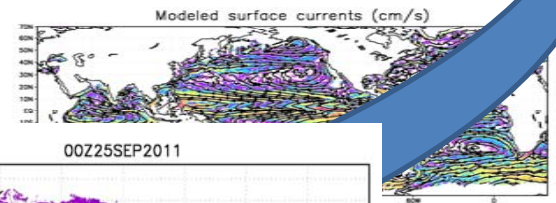
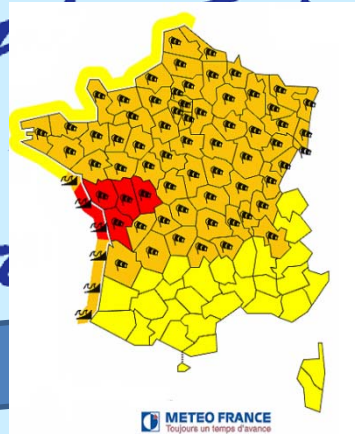
Near real time products to applications



swh (fdm1r) - subcycle 014 - 2011/04/19 - 2011/05/18



an Surface
ray
nce
Team



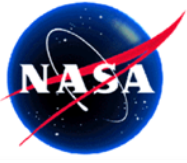
19-21 Oct



Approach



- Value-added products with high-accuracy measurements of SSHA in Near-Real-Time (NRT).
 - Typical 3-7 hour latency
- Improve density of NRT SSHA measurements using three missions: Jason-2, Jason-1, and **ENVISAT (new)**.
- Models for SSB and other geophysical corrections for Jason-1.
- Forecast pressure fields from National Centers for Environmental Prediction (NCEP)
- Orbit altitude accuracy is limiting error source for SSHA from project products.
- Improve orbit altitude accuracy:
 - Jason-2: GPS-based NRT precise orbit determination.
 - Jason-1 and ENVISAT: Inter-satellite SSH crossover-based orbit altitude determination with respect to Jason2 reference.



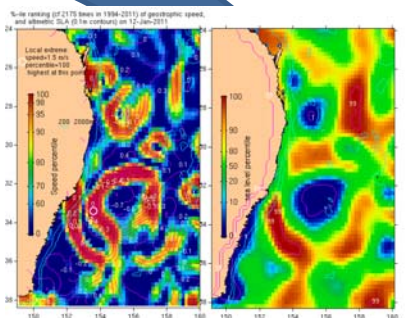
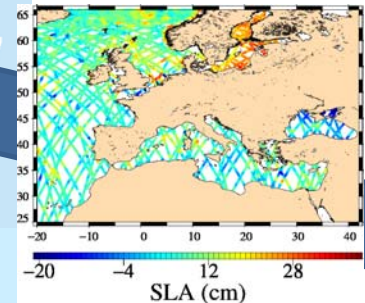
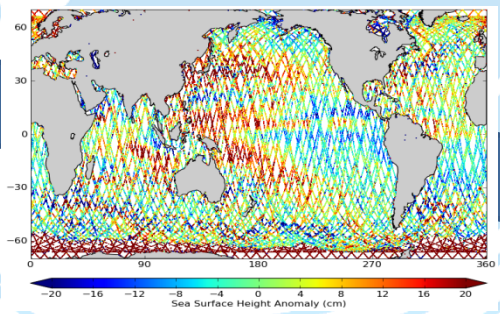
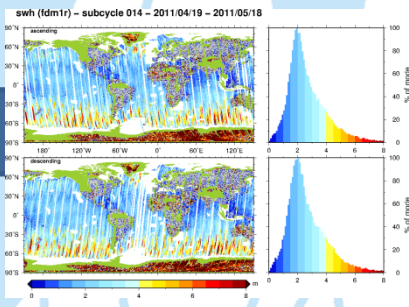
Conclusions



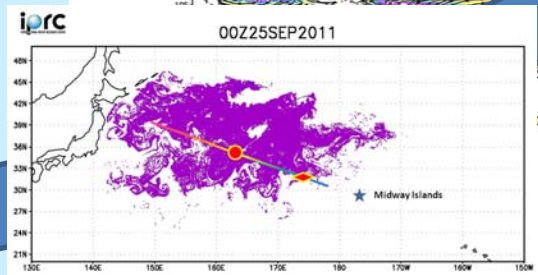
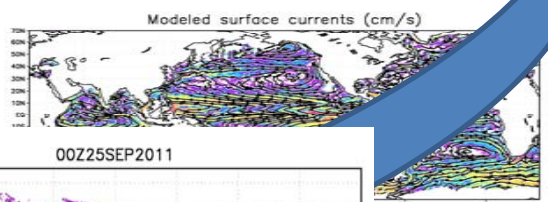
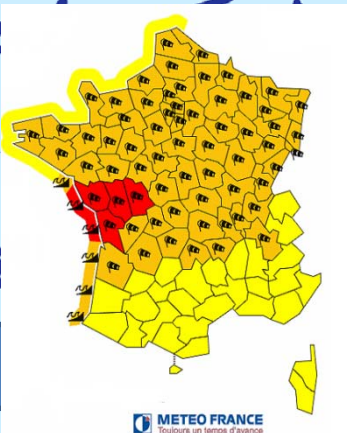
NRT SSHA Product	Orbit Altitude Accuracy (cm)	1-Hz SSHA Accuracy (cm)	Latency (hours)	Release Date
Jason-2 GPS-OGDR-SSHA	1	< 3.5	3-5	June 5, 2009
Jason-1 OSDR-SSHA	2	< 4.0	7-9	Dec. 17, 2009
ENVISAT FDGDR-SSHA	< 3	< 5.0	7-9	Aug. 5, 2011

- Jason-2 NRT GPS-based precise orbit determination accuracy similar to GDR-T POE.
- Jason-1 and ENVISAT NRT orbit altitude accuracy slightly worse than MOE.
 - Additional tuning possible to improve Jason-1 and ENVISAT NRT orbit altitude accuracy.
- Significant advances in DIODE capability from ENVISAT, to Jason-1, to Jason-2.
- NRT SSHA products should not be considered as definitive climate records:
- Available at Physical Oceanography Distributed Active Archive Center:
<ftp://podaac.jpl.nasa.gov/SeaSurfaceTopography/>
- **ENVISAT NRT FDGDR-SSHA product testament to productive partnership between ESA, CNES, and JPL.**

Near real time products to applications



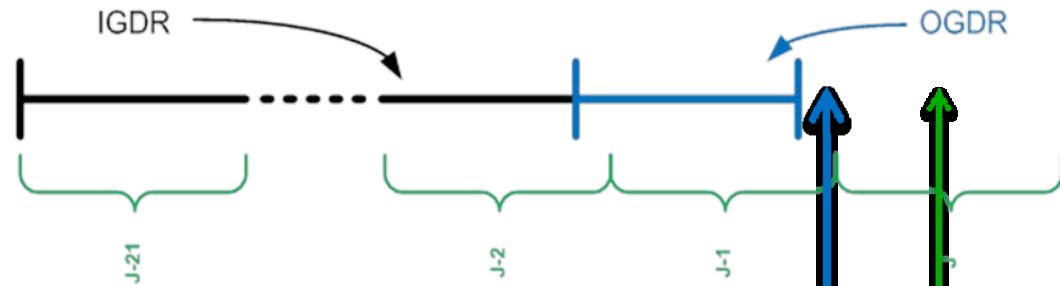
an Surface
ray
nce
Team



19-21 Oct

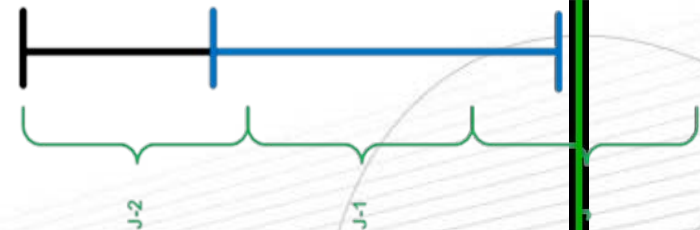
From OGDR to 'OGDR on the fly'

OGDR



DUACS production starts at 10 pm

OGDR
'On the fly'



DUACS system at 12 am

Timeliness reduced to 4 h for all the flows compared to 27 h

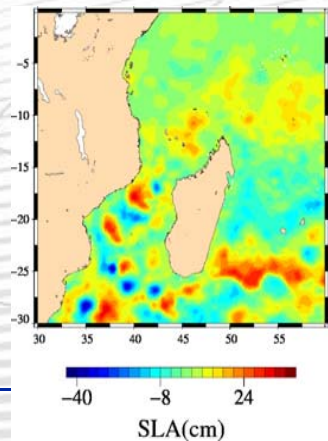
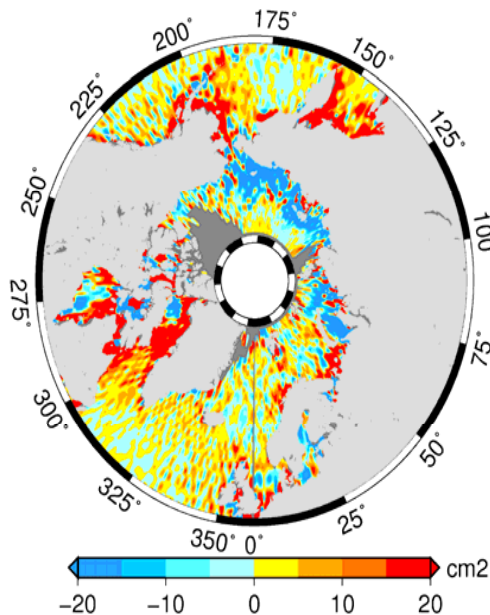
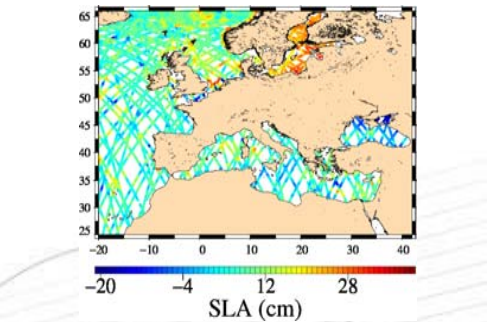
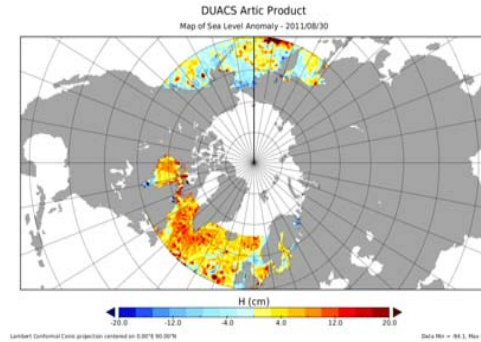
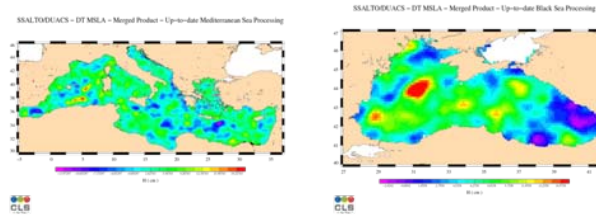
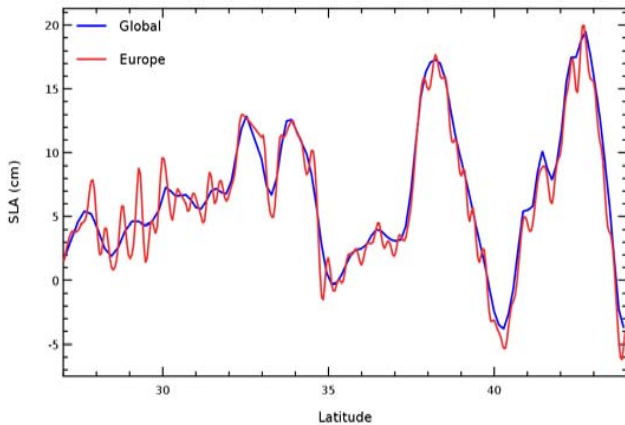
Improvement Level 3 along track products

- Better serve the need for accurate along track operational products for modeling centers

- Towards L3 regional products

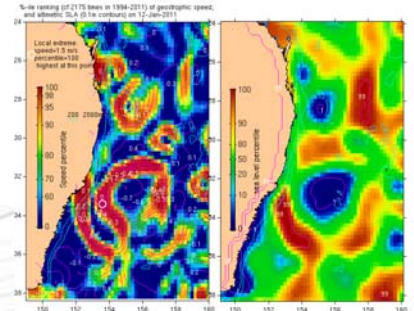
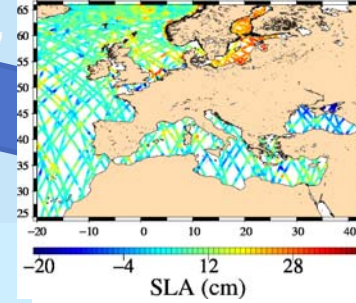
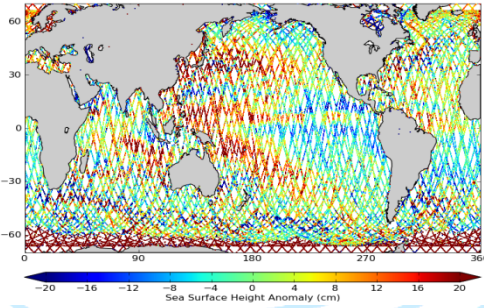
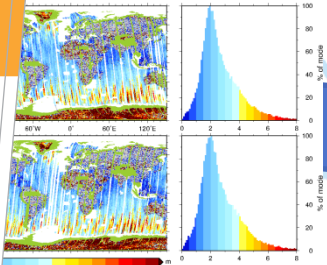
- Improvement of regional products $EN\ 2007\ Var[SLA(TPX)] - Var[SLA(GOT47)]$

- Towards higher resolution
- Specific ocean tide models
- Improving data coverage



Near real time products to applications

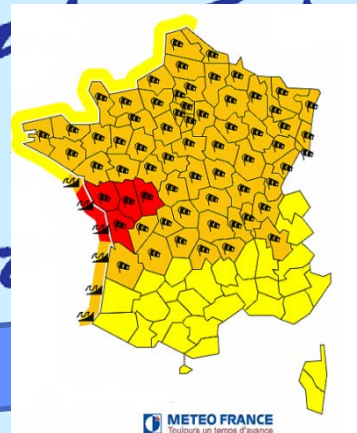
file 014 - 2011/04/19 - 2011/05/18



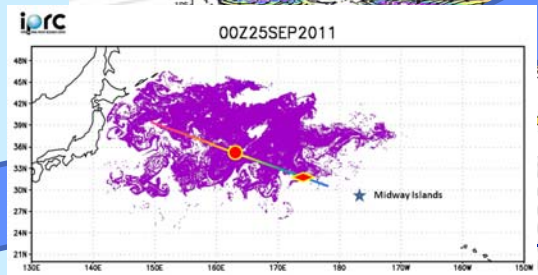
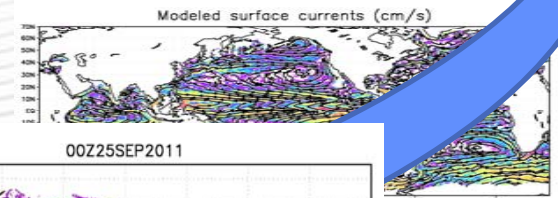
an Surface
ray
nce

Team

19-21 Oct



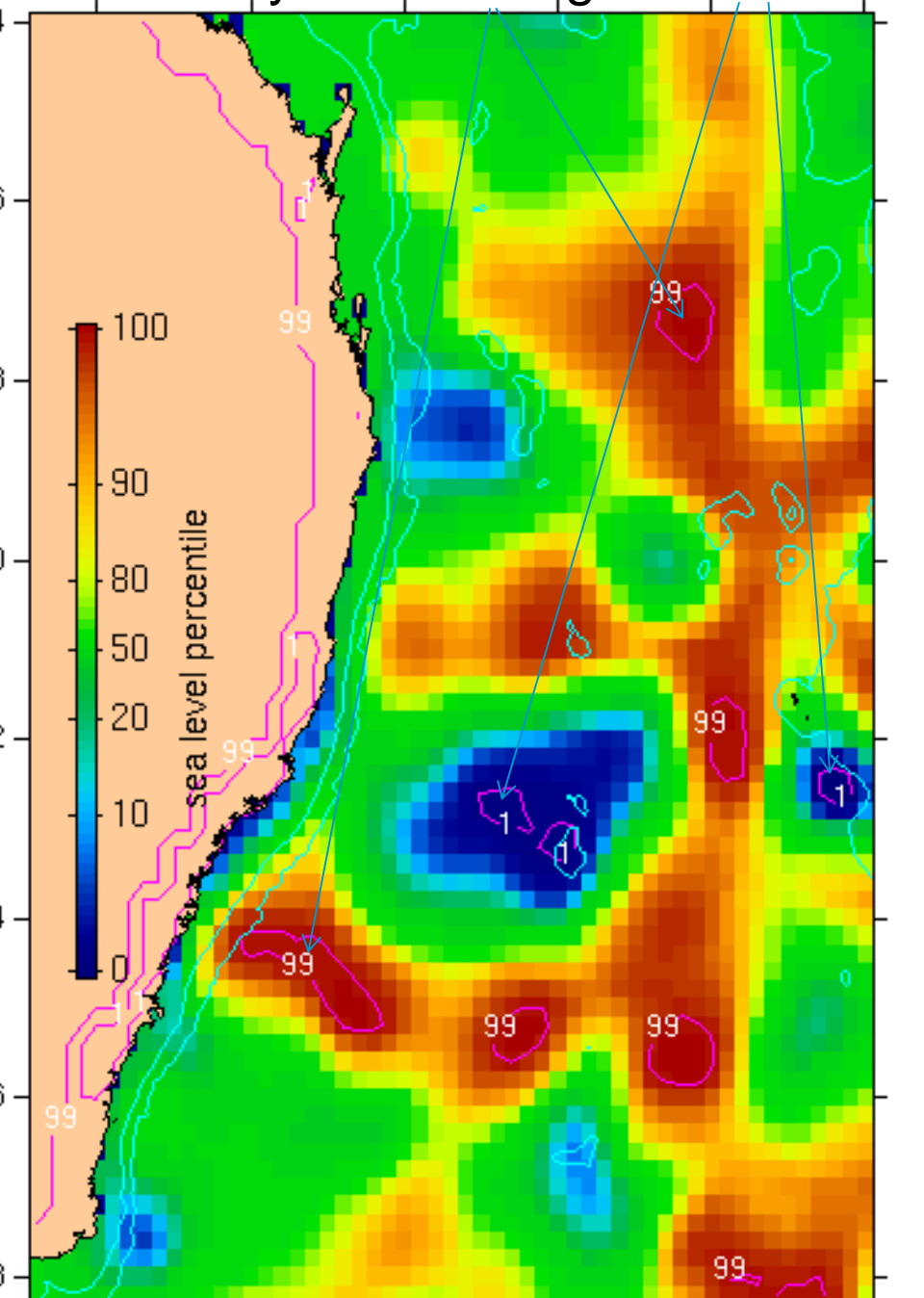
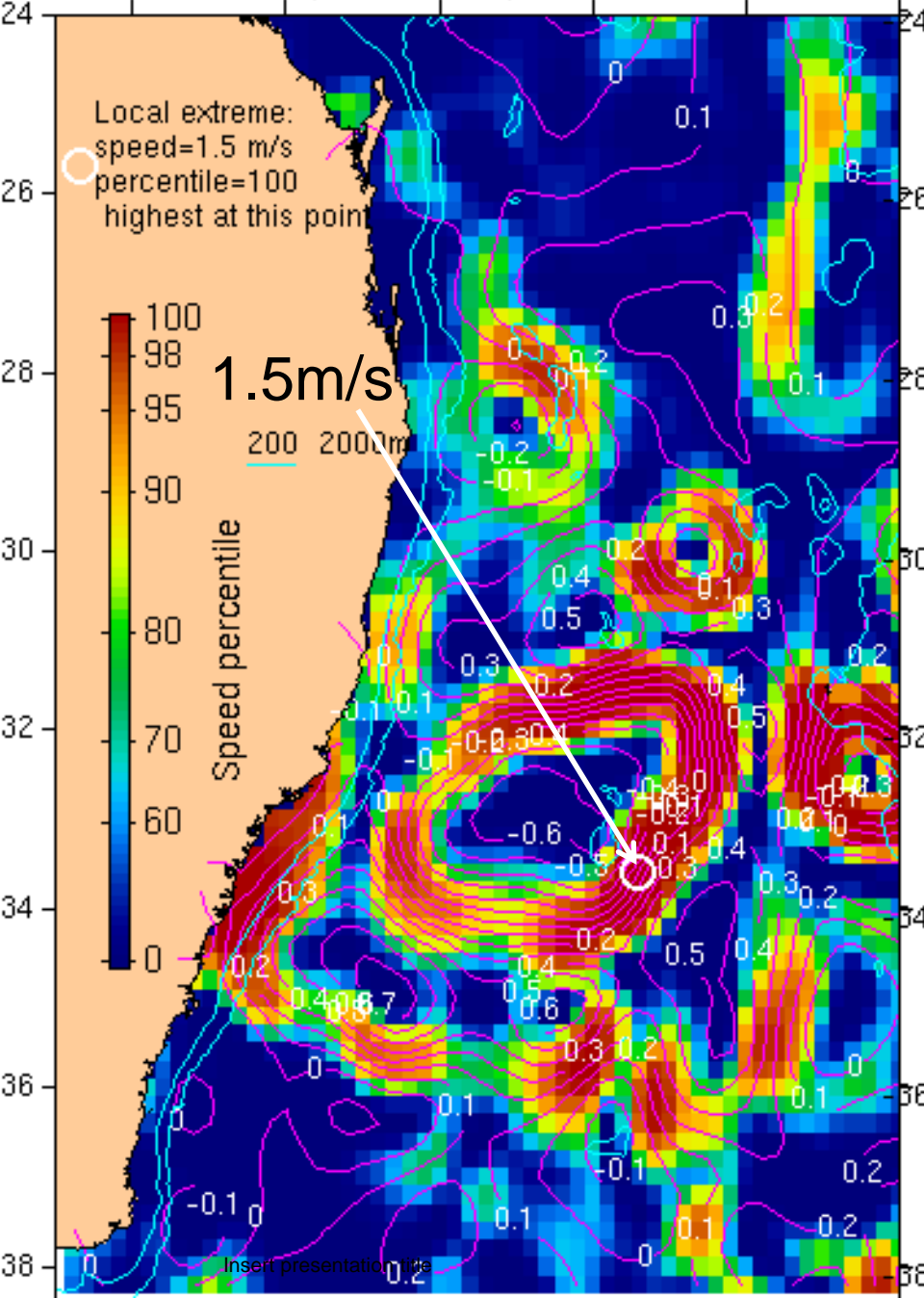
METEO FRANCE
Toujours un temps d'avance



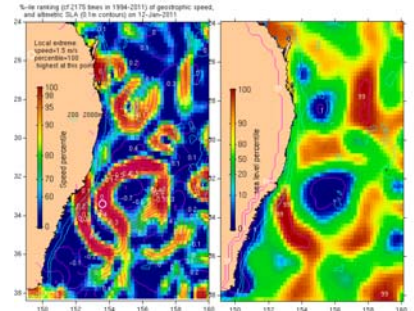
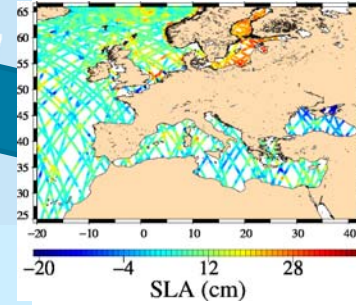
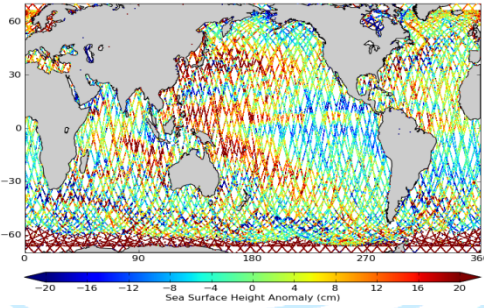
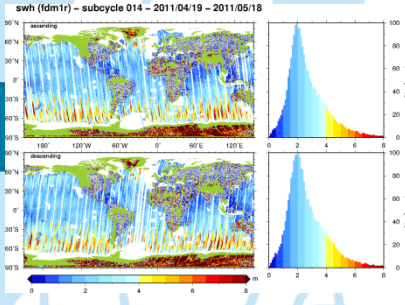
r 2011



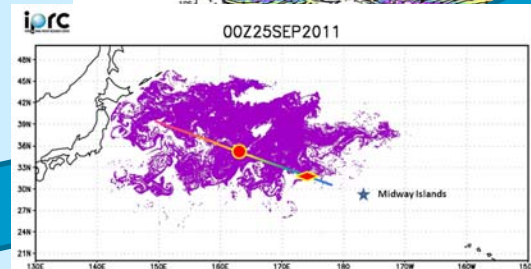
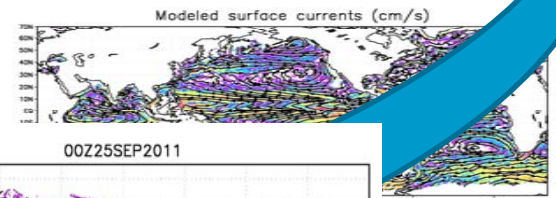
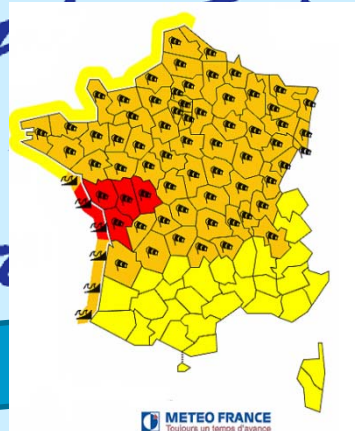
%-ile ranking (cf 2175 times in 1994-2011) of geostrophic speed, and altimetric SLA (0.1m contours) on 16-Jan-2011 **16 Jan 2011: Many extreme highs and lows**



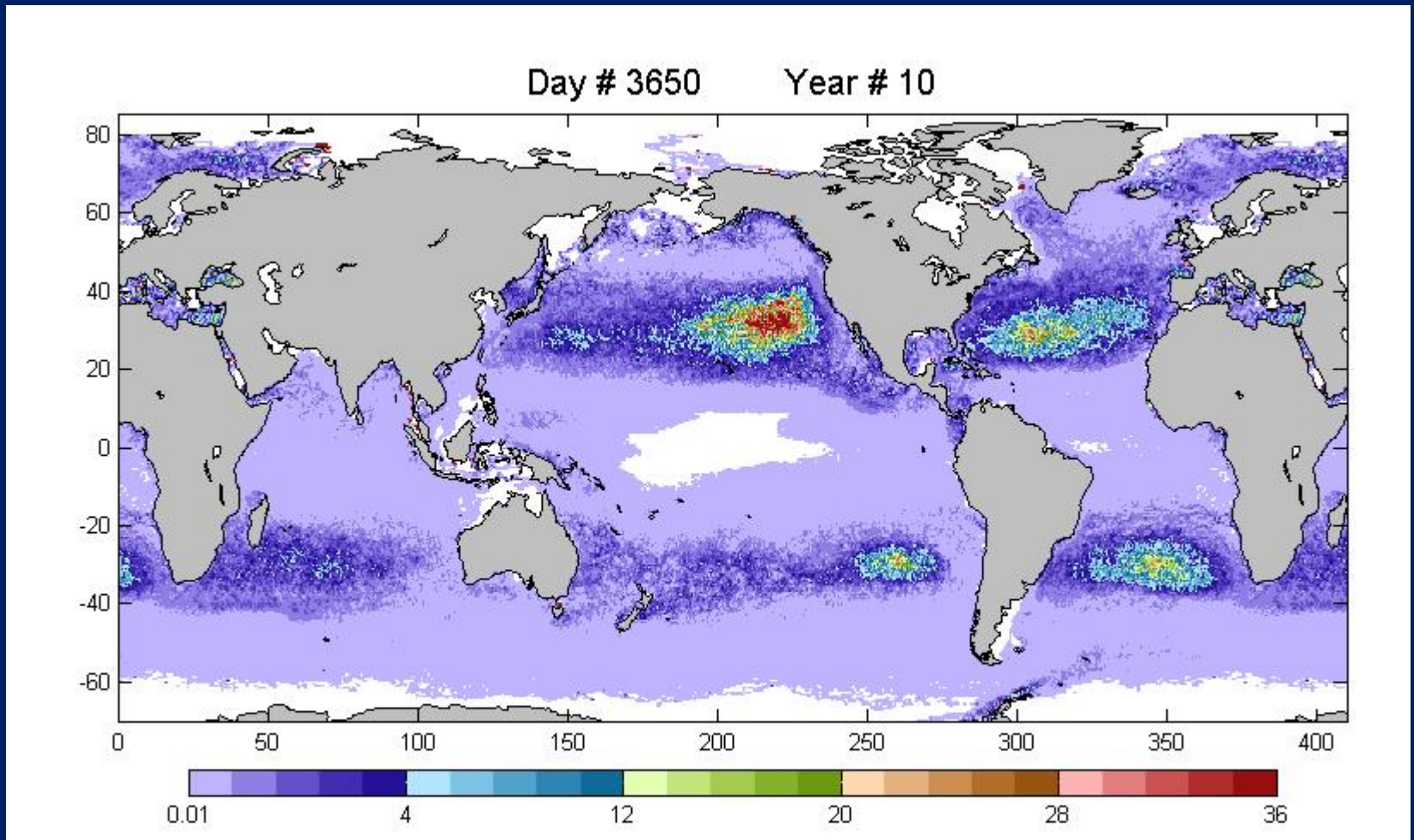
Near real time products to applications



an Surface
 ay
 Team
 19-21 Oct

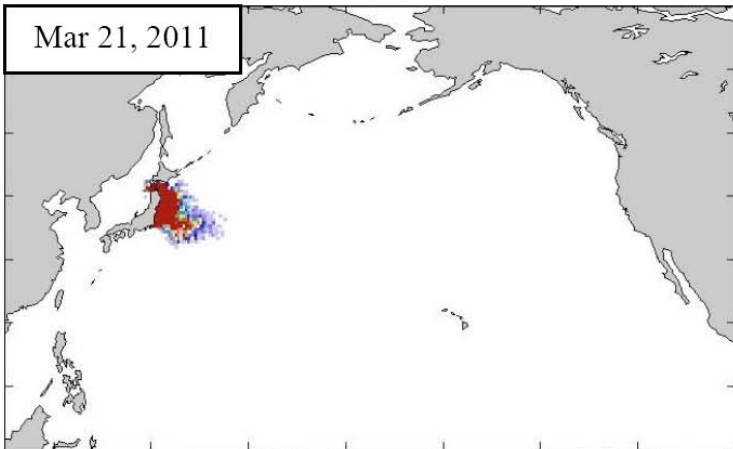


UH: Model debris distribution from coastal sources (without tsunami)

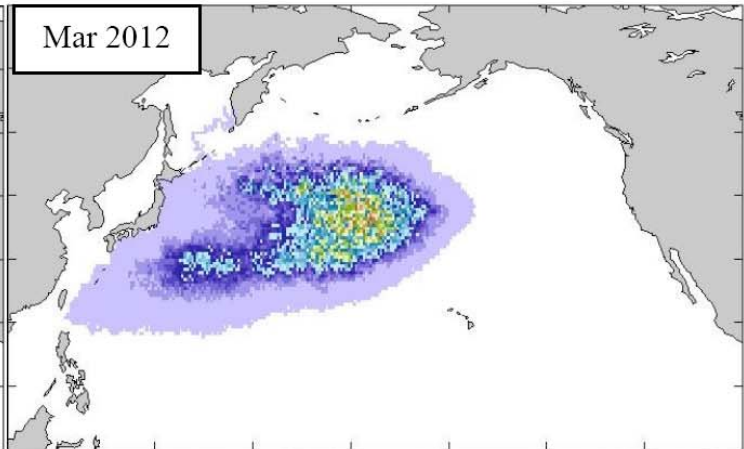


Collaborations with the SEA, “5 Gyres”, KAISEI/Ocean Voyages, Jim Mackey et al. helped to validate accumulation of microplastic in all five subtropical convergences

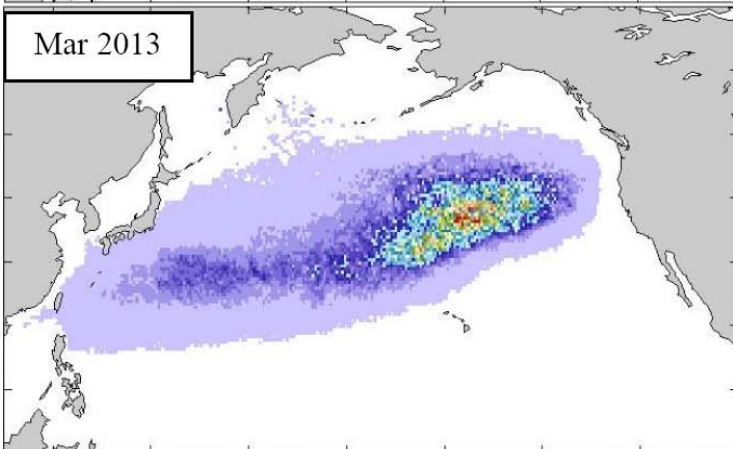
Mar 21, 2011



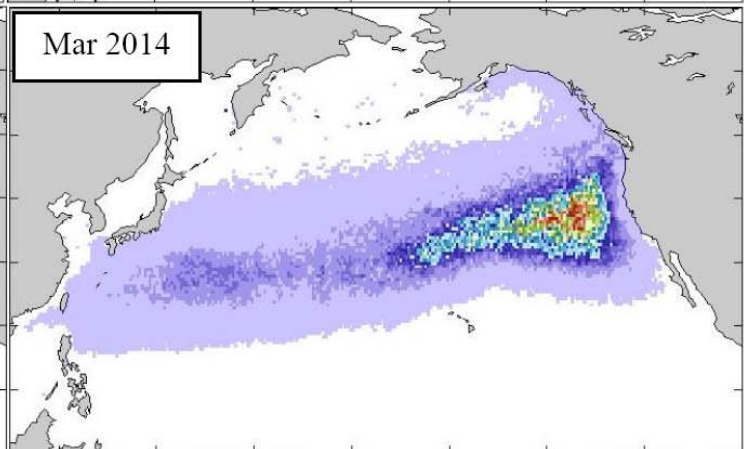
Mar 2012



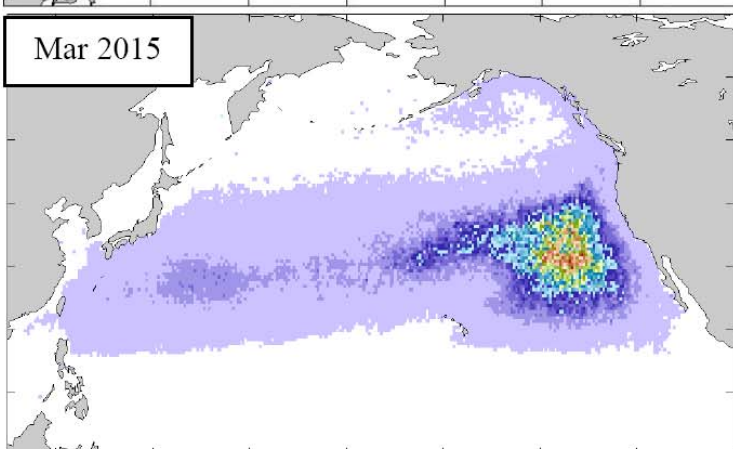
Mar 2013



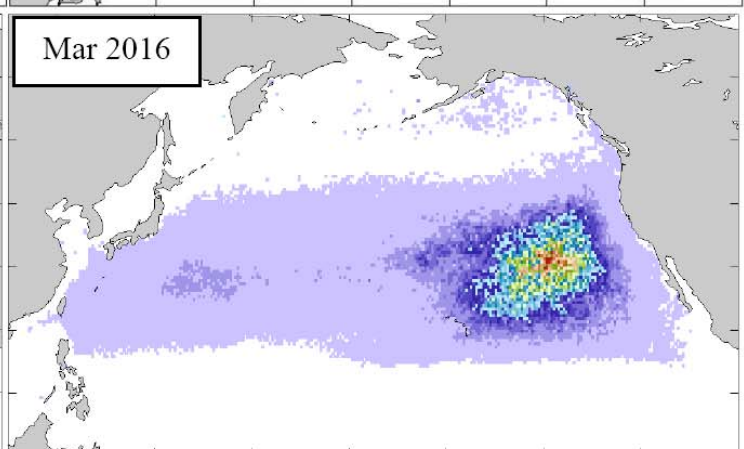
Mar 2014



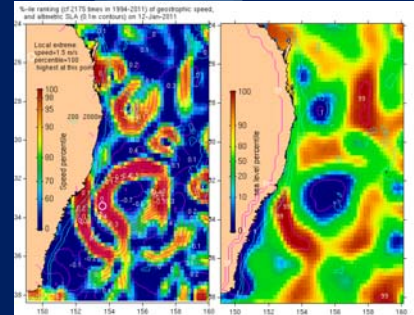
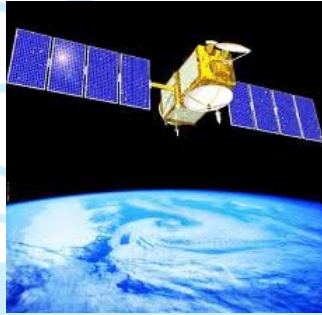
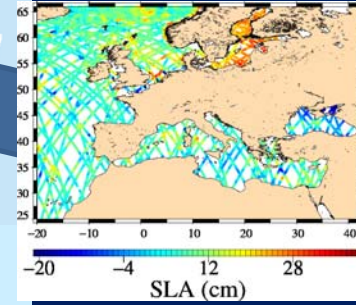
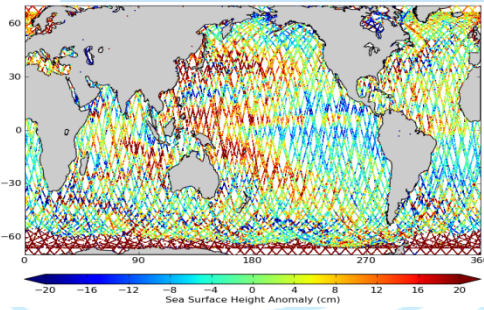
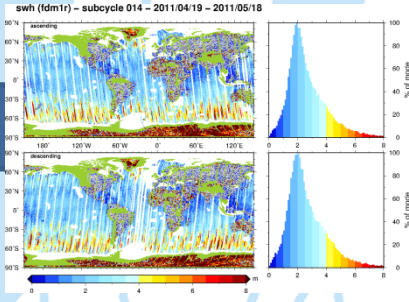
Mar 2015



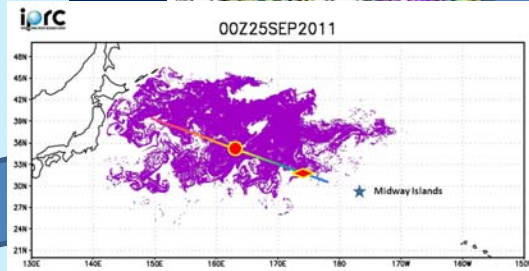
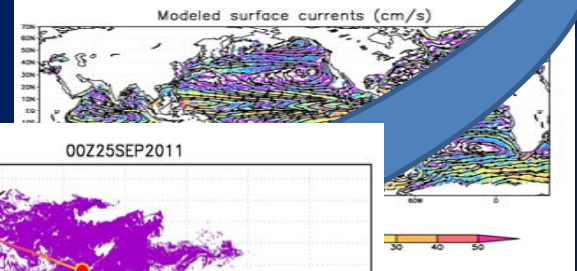
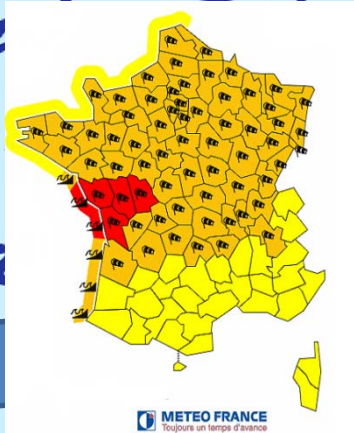
Mar 2016



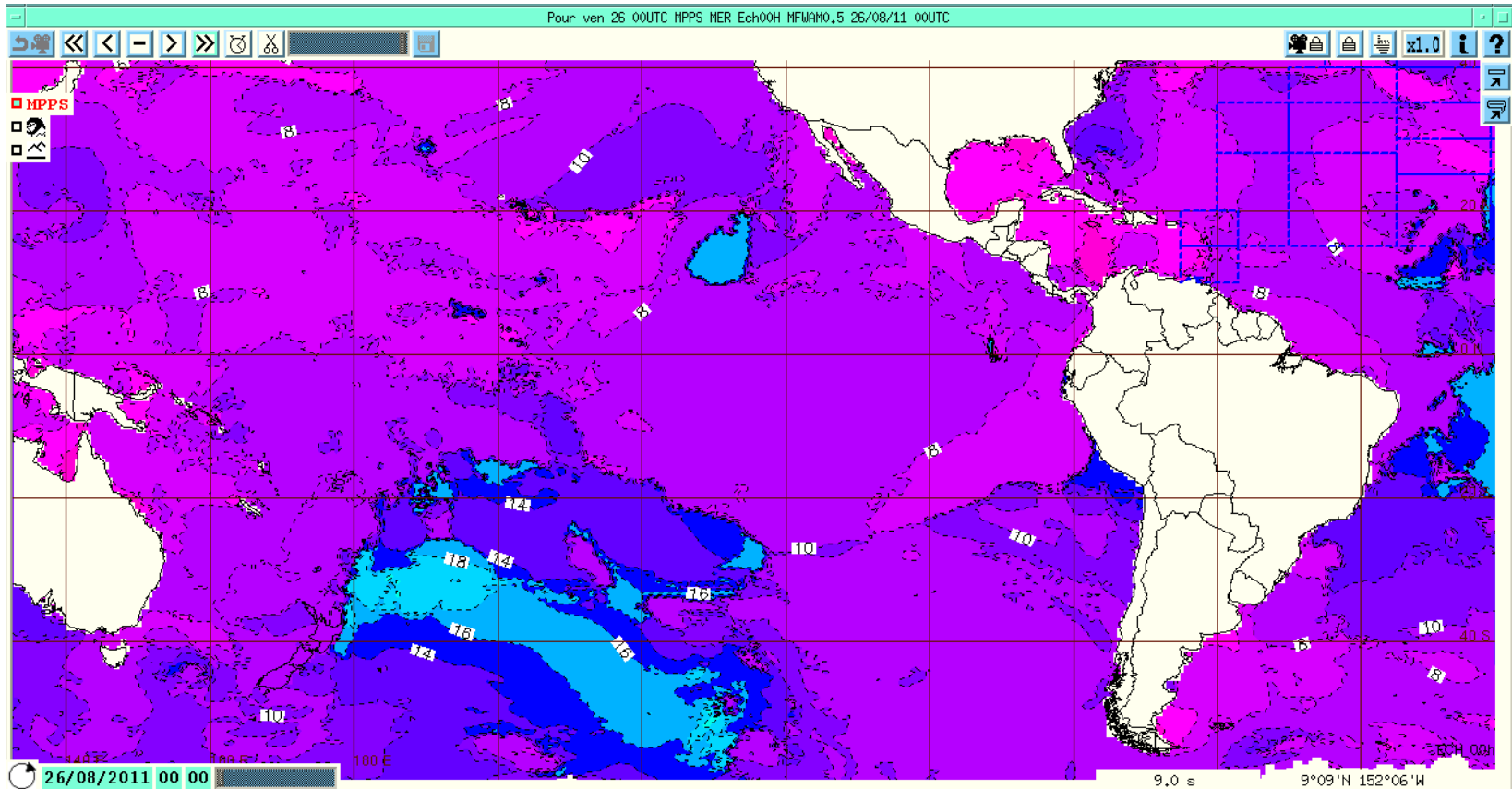
Near real time products to applications



an Surface
 ay
 Team
 19-21 Oct



Example of event that activated the warning system in French Polynesia:



5 m and 18s (wave length 500 m) swell

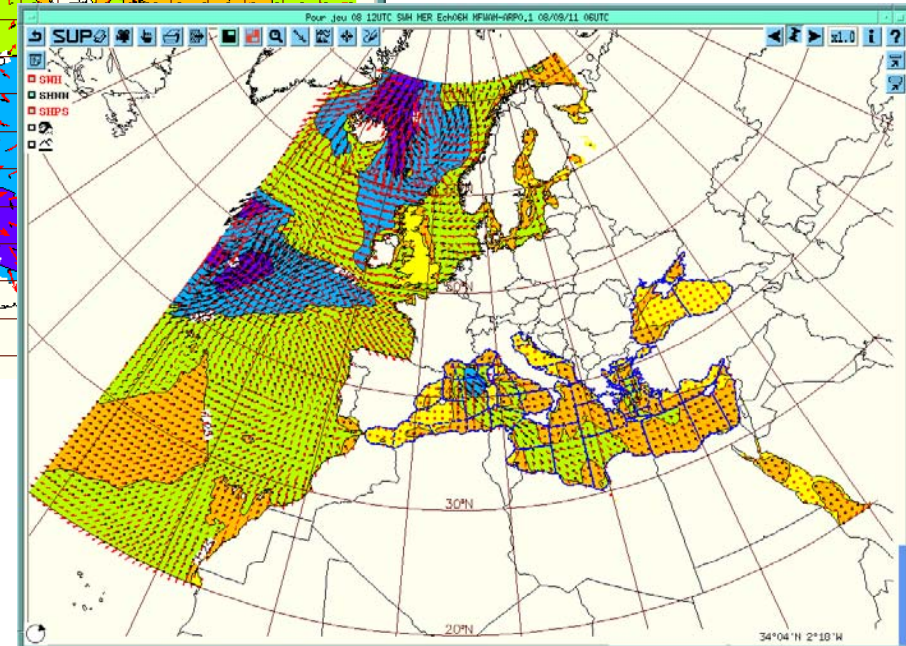
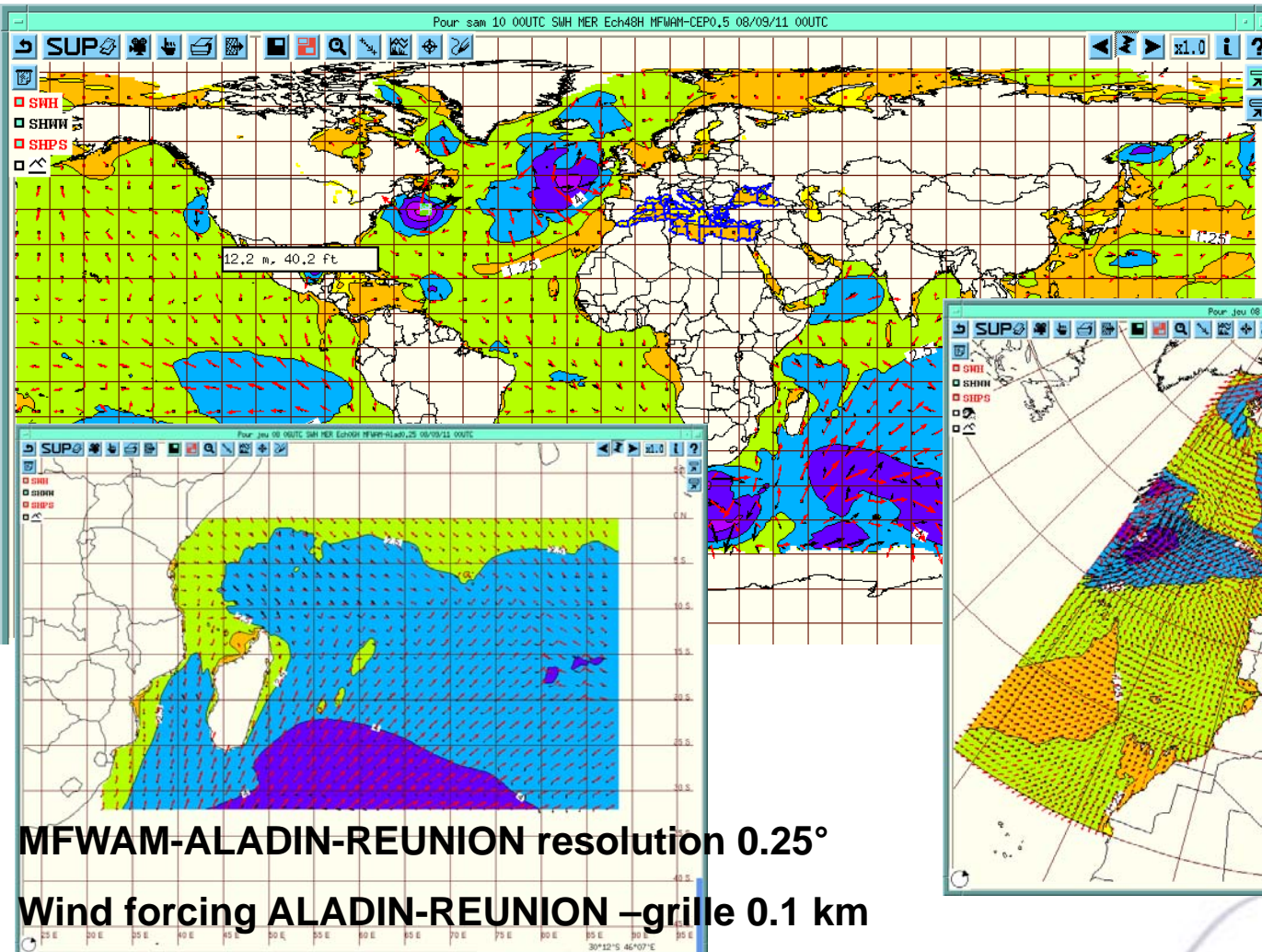
Expected wave set up, locally more than 1.5 m

No buoy data, only data from space

New wave forecasting system of Meteo-France:

2 global wave models MFWAM driven by different wind forcings: ECMWF and ARPEGE/IFS - resolution 55km

1 regional wave model MFWAM resolution 10km driven by ARPEGE. Soon with ECMWF as well

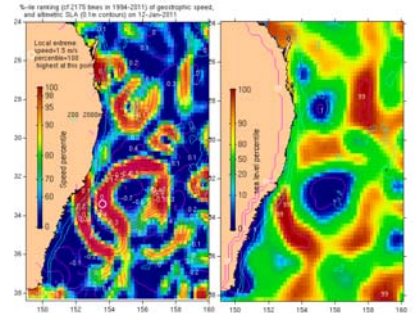
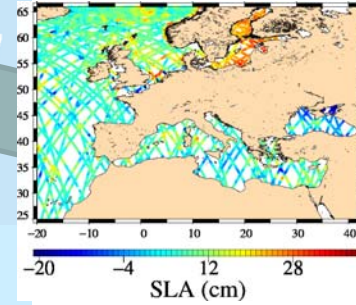
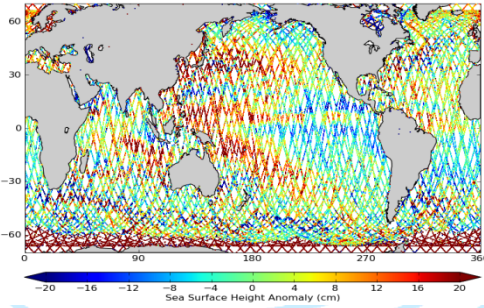
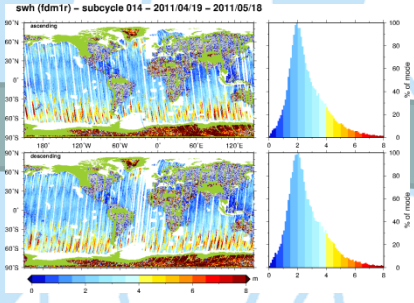


MFWAM-ALADIN-REUNION resolution 0.25°

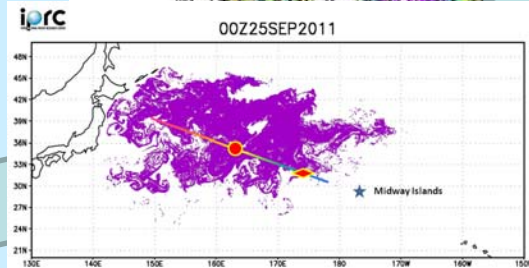
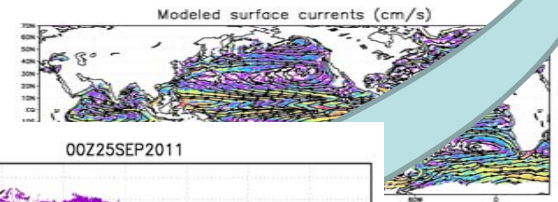
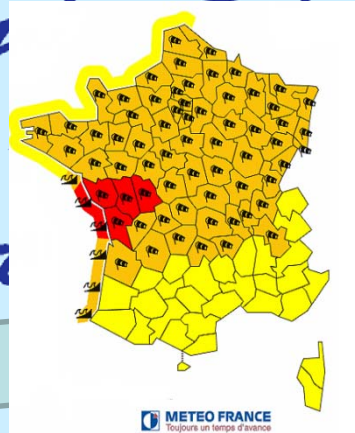
Wind forcing ALADIN-REUNION –grille 0.1 km

With hurricane bogusing – Next year other domains

Near real time products to applications



an Surface
 ay
 Team
 19-21 Oct





NRT Splinter Discussion Points



1. Recommend upload of V.11 DORIS/DIODE software

- Radial orbit error reduction from 3.3 cm to 2.7 cm in OGDRs



Summary



Latency times continue to decrease, which translates into improved forecast accuracies and warnings

Processing extends new missions (CS2) to applications, and old missions to new applications (coastal)

Applications continue to move closer to general public and impact daily life through monitoring of resources and warnings of significant events both traditional (hurricane) and unusual (tsunami)