



Regional processing of altimetry data at the Centre of Topography of the Oceans and the Hydrosphere (CTOH)

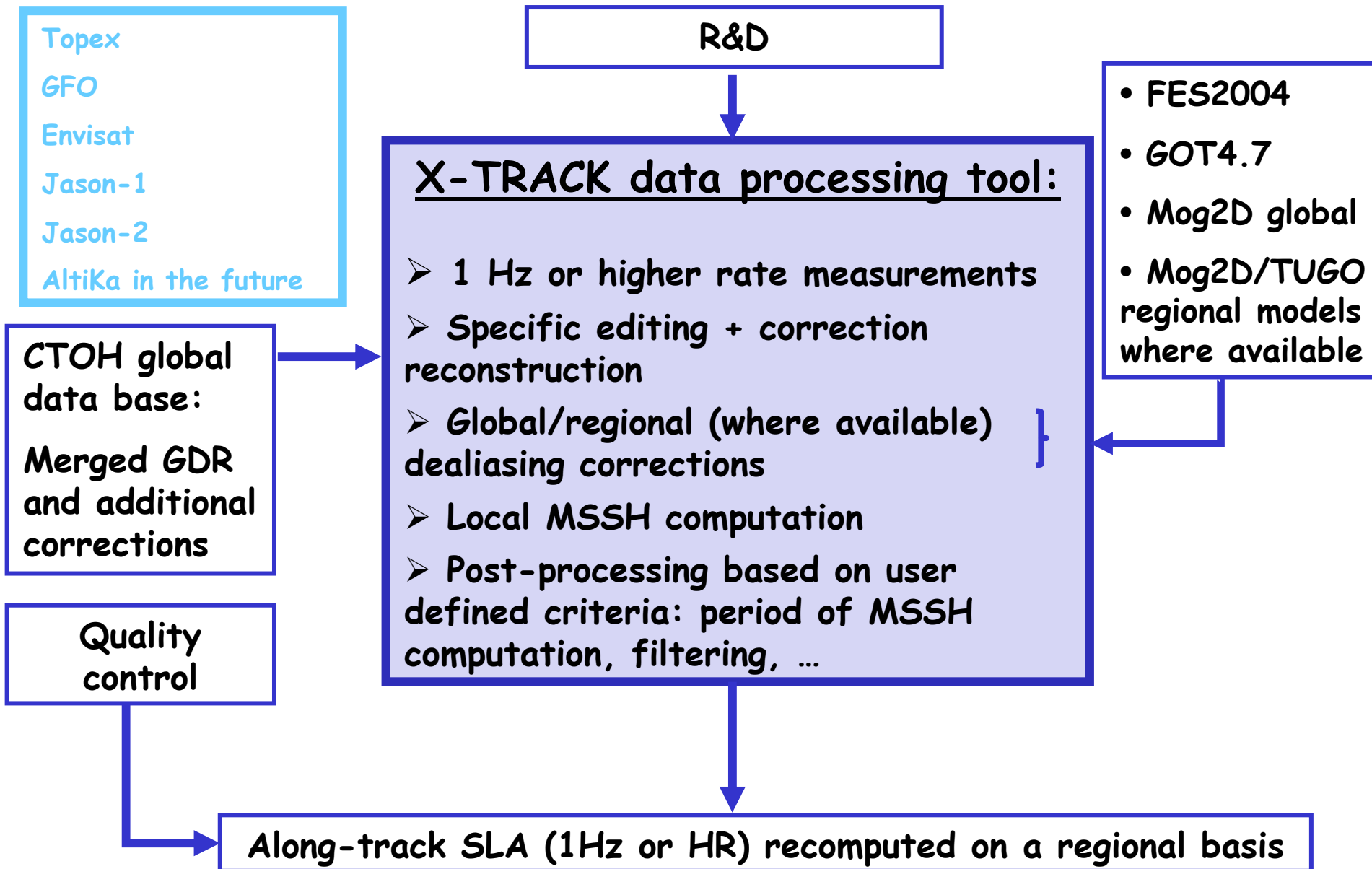
Florence Birol, Caroline Delebecque, Renaud Dussurget, Laurent Roblou, Sara Fleury, Rosemary Morrow, Fernando Niño and Blaise Picinbono

<http://ctoh.legos.obs-mip.fr/>

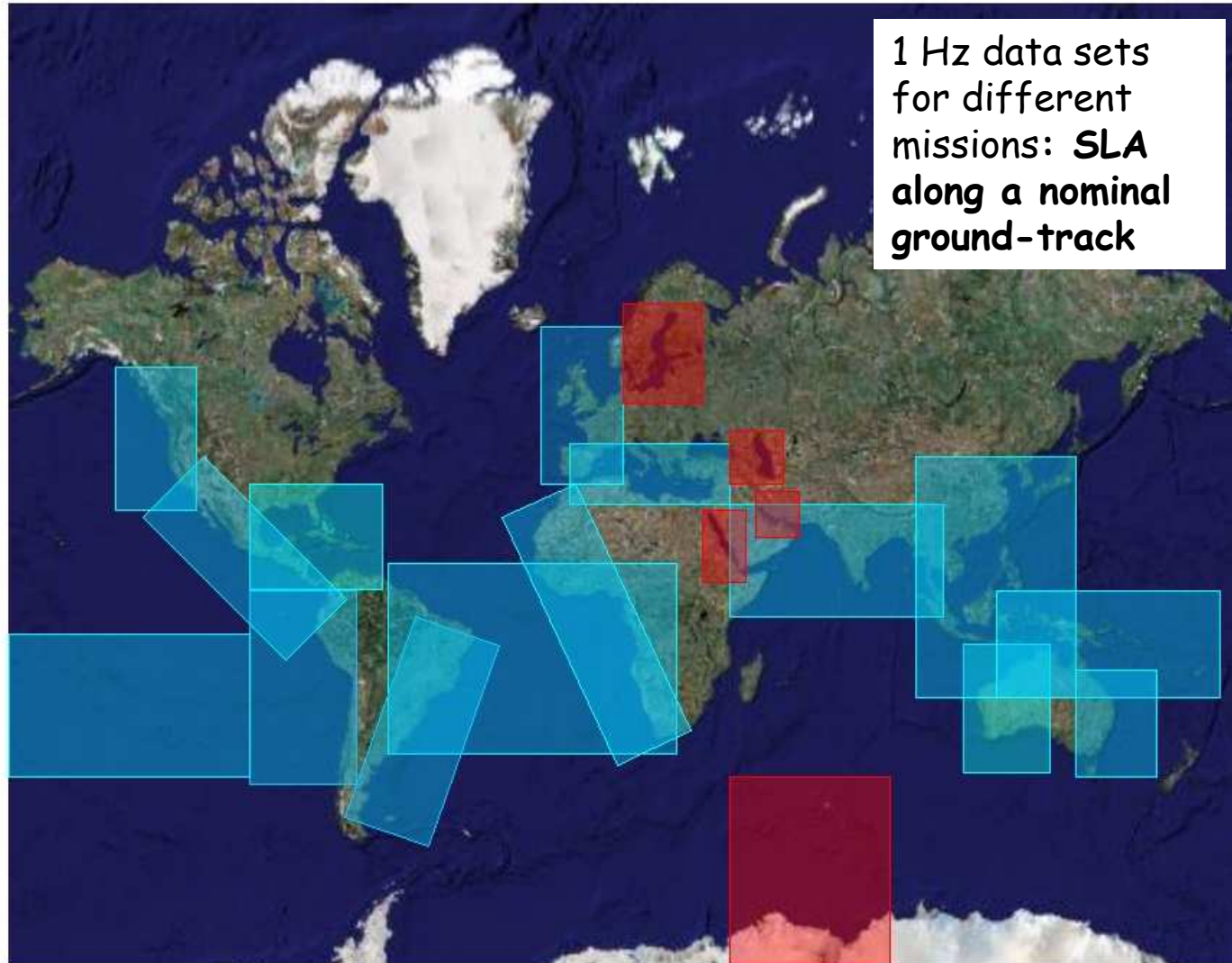
The screenshot shows the homepage of the CTOH website. The header includes the CTOH logo and navigation links: Home, Products, Altimetry, Applications, Quality Assessment, Outreach, About CTOH, News, and FAQ. A search bar is located in the top right. The main content area features a 'Home' section with a welcome message and a list of services: longtrack GDR data with up-to-date corrections, coastal alongtrack GDR data, and global surface currents. Below this, there are three featured sections: 'Monitoring lake and river levels - HYDROWEB' with a graph of lake level variations, 'Coastal altimetry - X-track' with a map of coastal altimetry tracks, and 'Polar Ice Cap topography' with a map of the Antarctic ice sheet.



CTOH coastal tools



CTOH regional research products

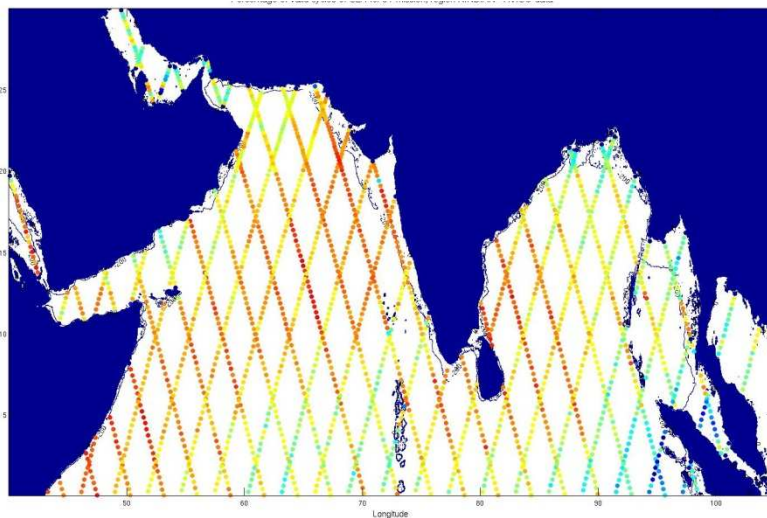


<http://ctoh.legos.obs-mip.fr/products/coastal-products>

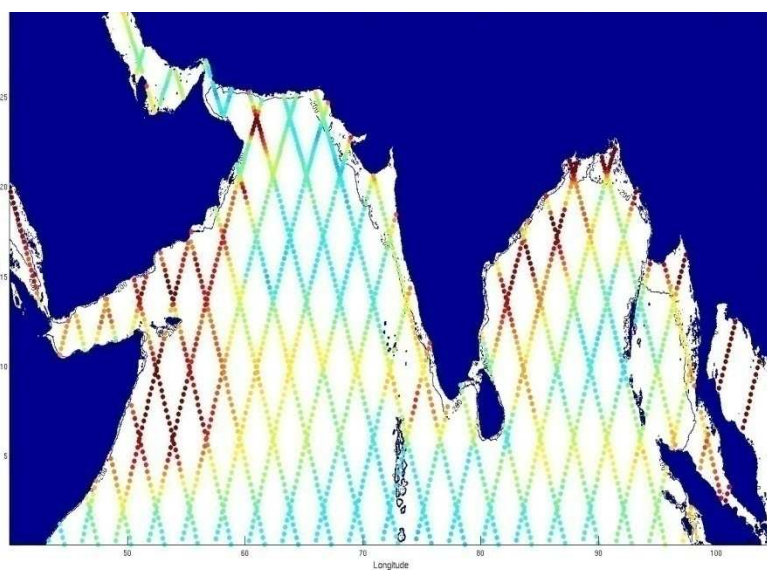
Example of the North Indian Ocean

Standard product - Jason 1

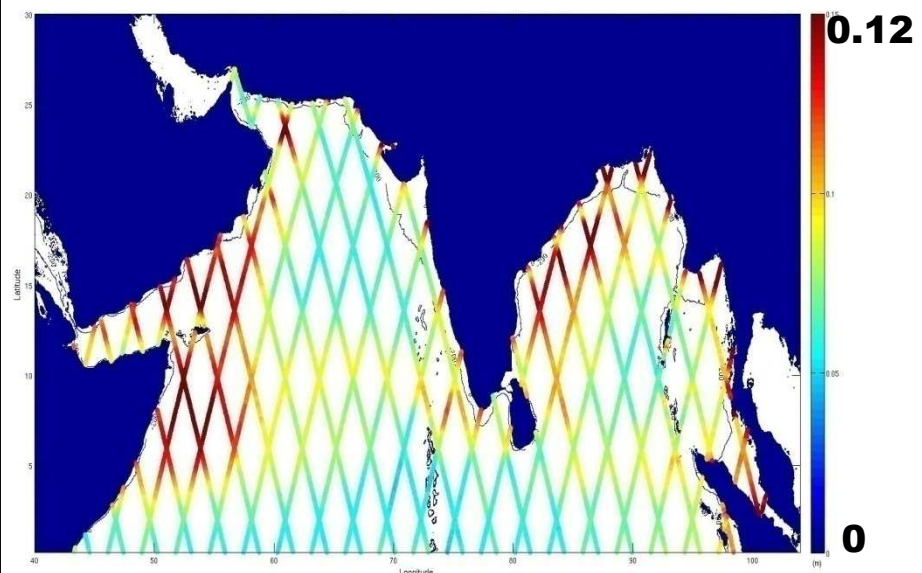
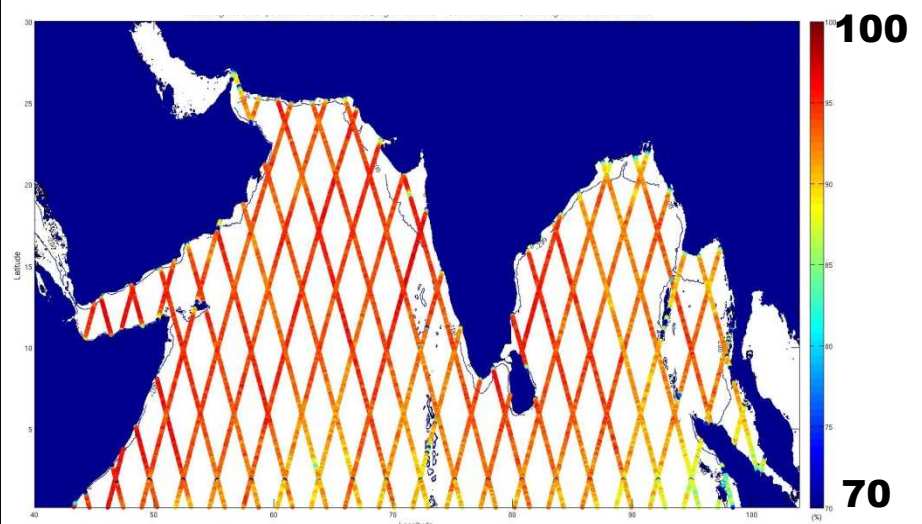
% of available data



RMS(SLA) in m



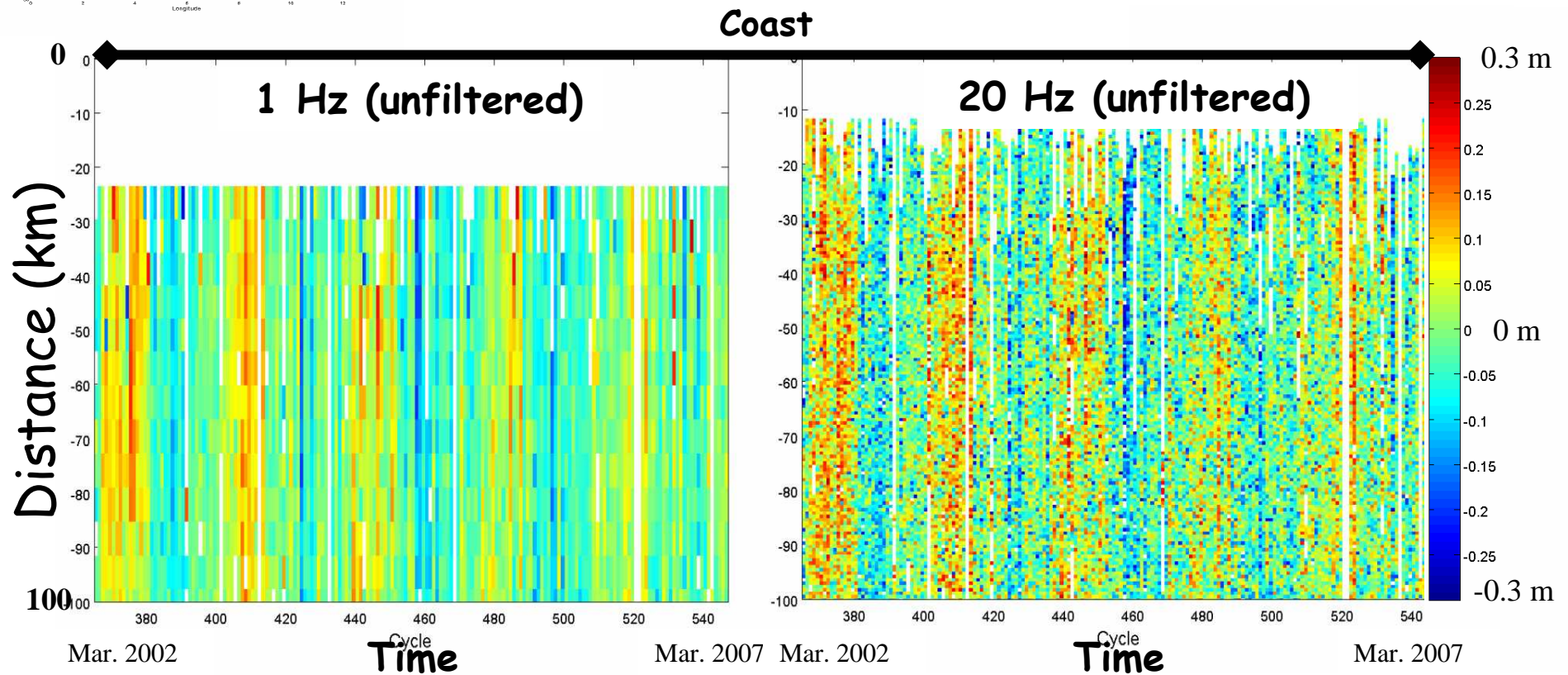
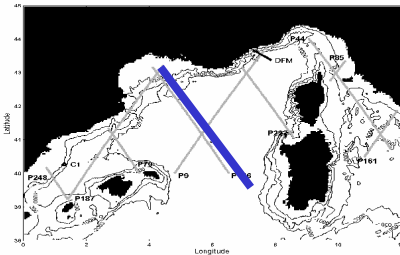
CTOH - Jason 1



Reprocessing alongtrack data - Working with 10-20 Hz data

Coastal & near-shore processes need high resolution sea level observations 1-100 km!

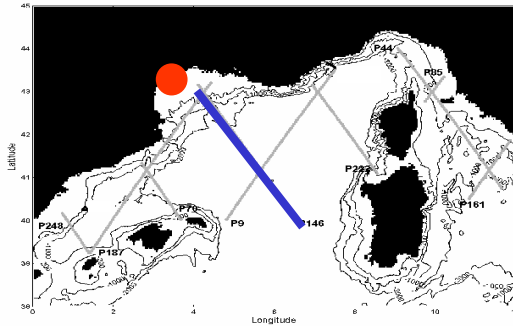
SLA vs distance from coast – Jason 1 track 146



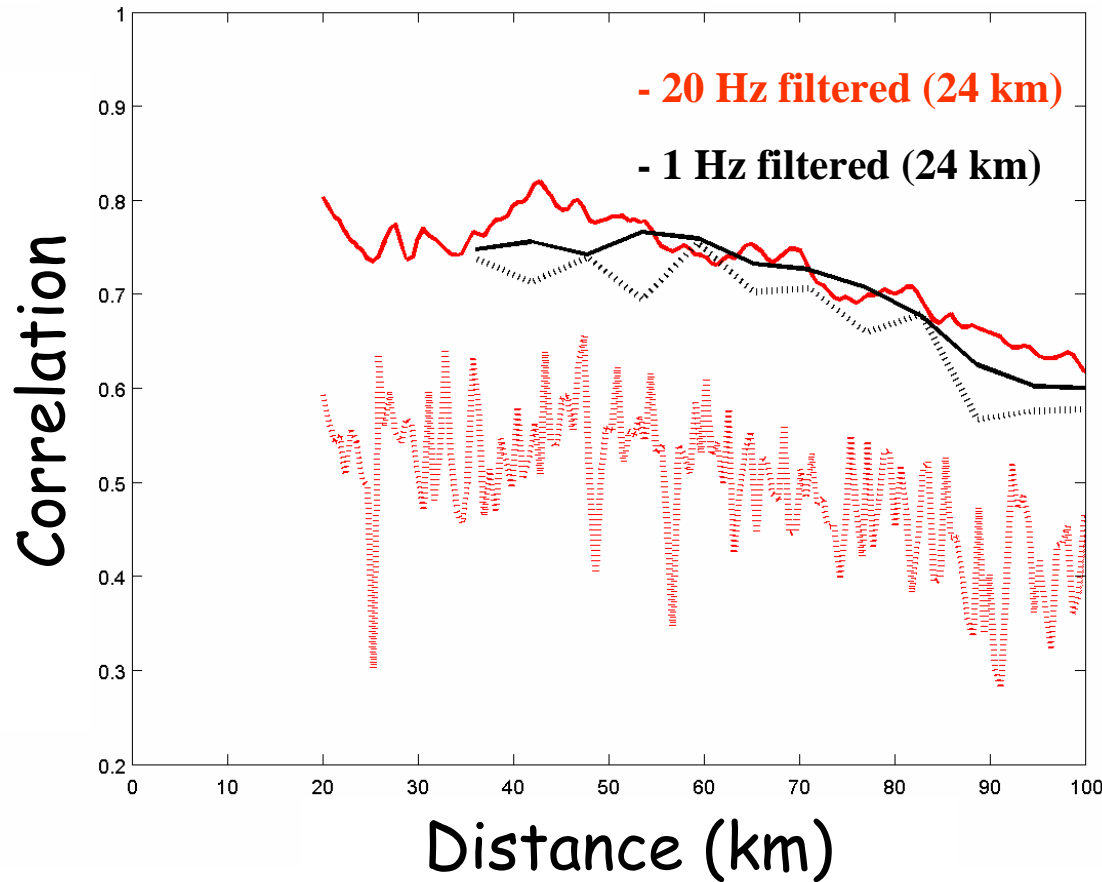
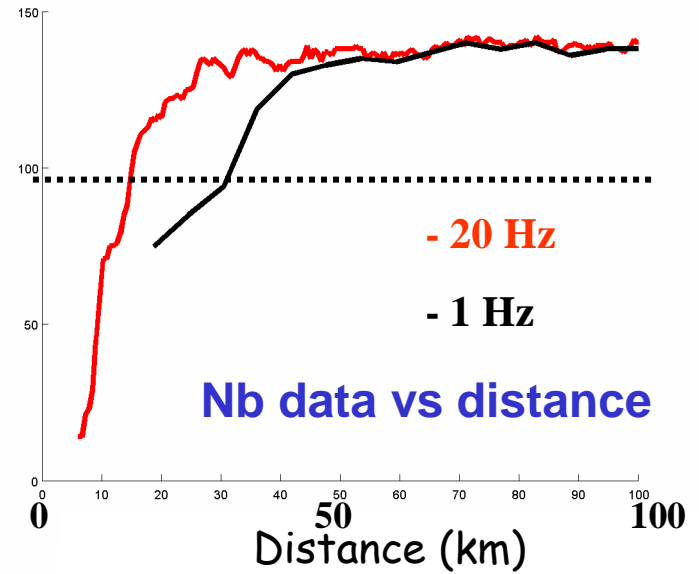
Many different groups working on this problem (PISTACH, COASTALT, CTOH, RADS, ...)



Reprocessing alongtrack data - Working with 10-20 Hz data

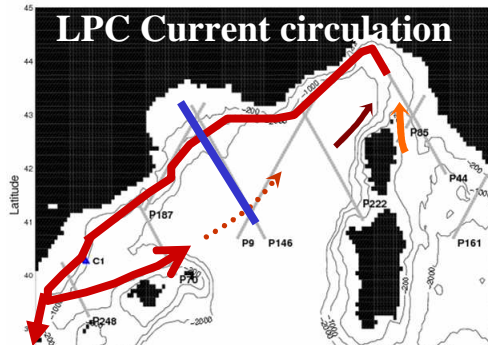


Jason 1 track 146
Jan. 2002 - Dec. 2005



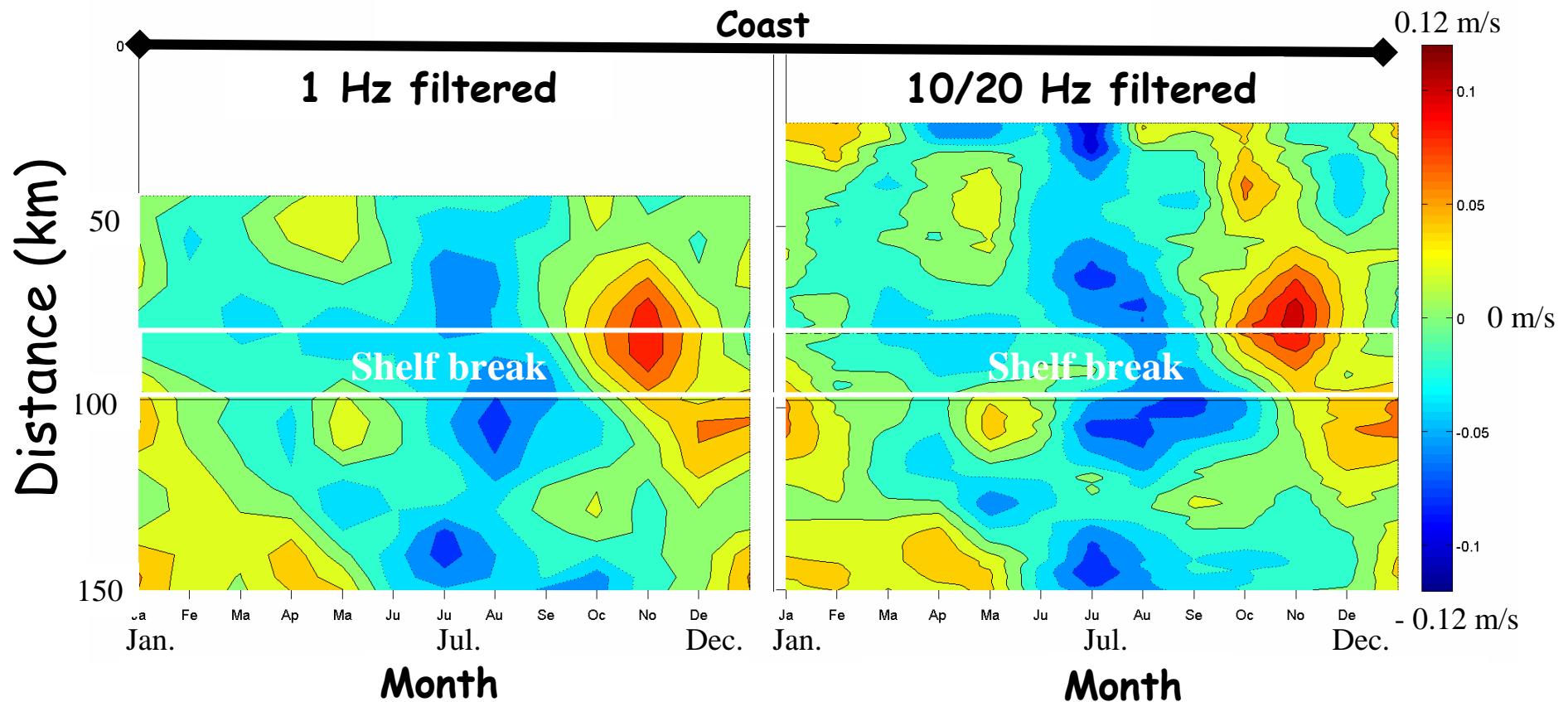


Reprocessing alongtrack data - Working with 10-20 Hz data

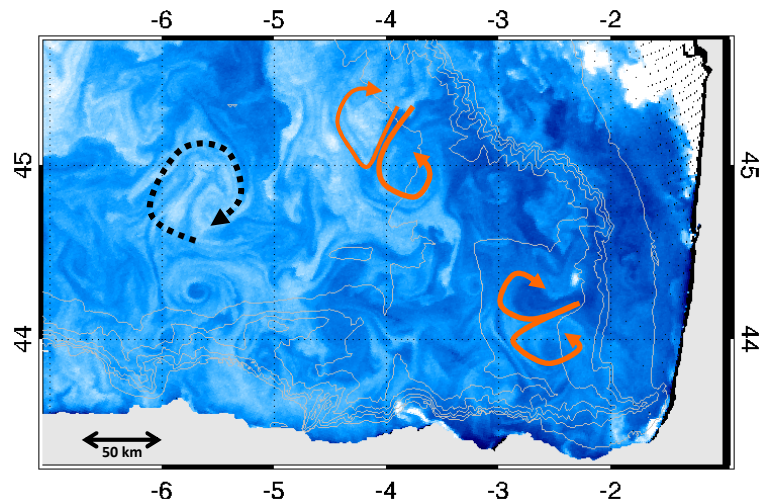


Monthly climatology of:
Cross-track geostrophic current anomalies (altimetry T/P & Jason-1 over the period 1993-2008)

Altimetry current vs distance from coast – Track 146

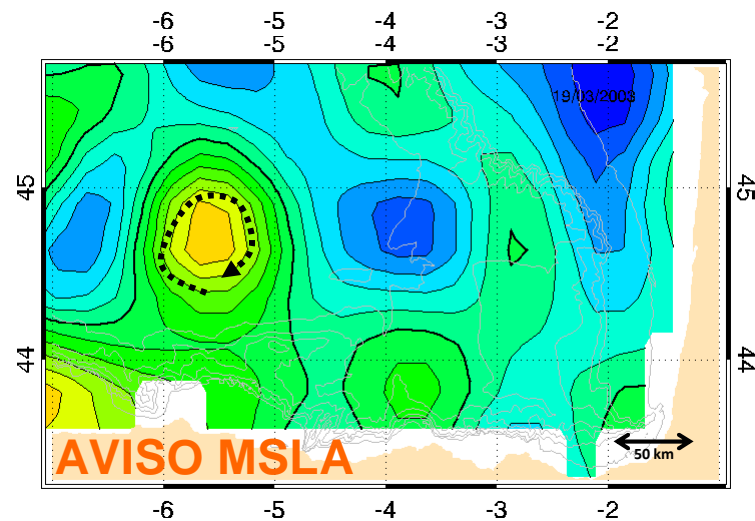
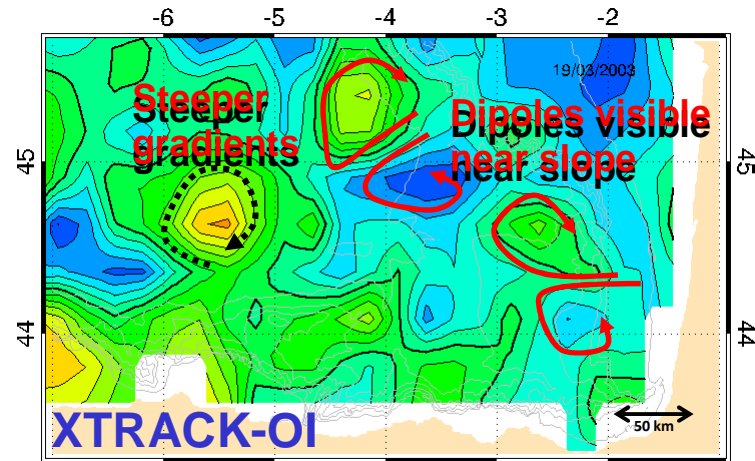


Observability of mesoscale dynamics in 2D gridded SLA maps



MODIS Aqua Pseudo-color image - 18/03/2003

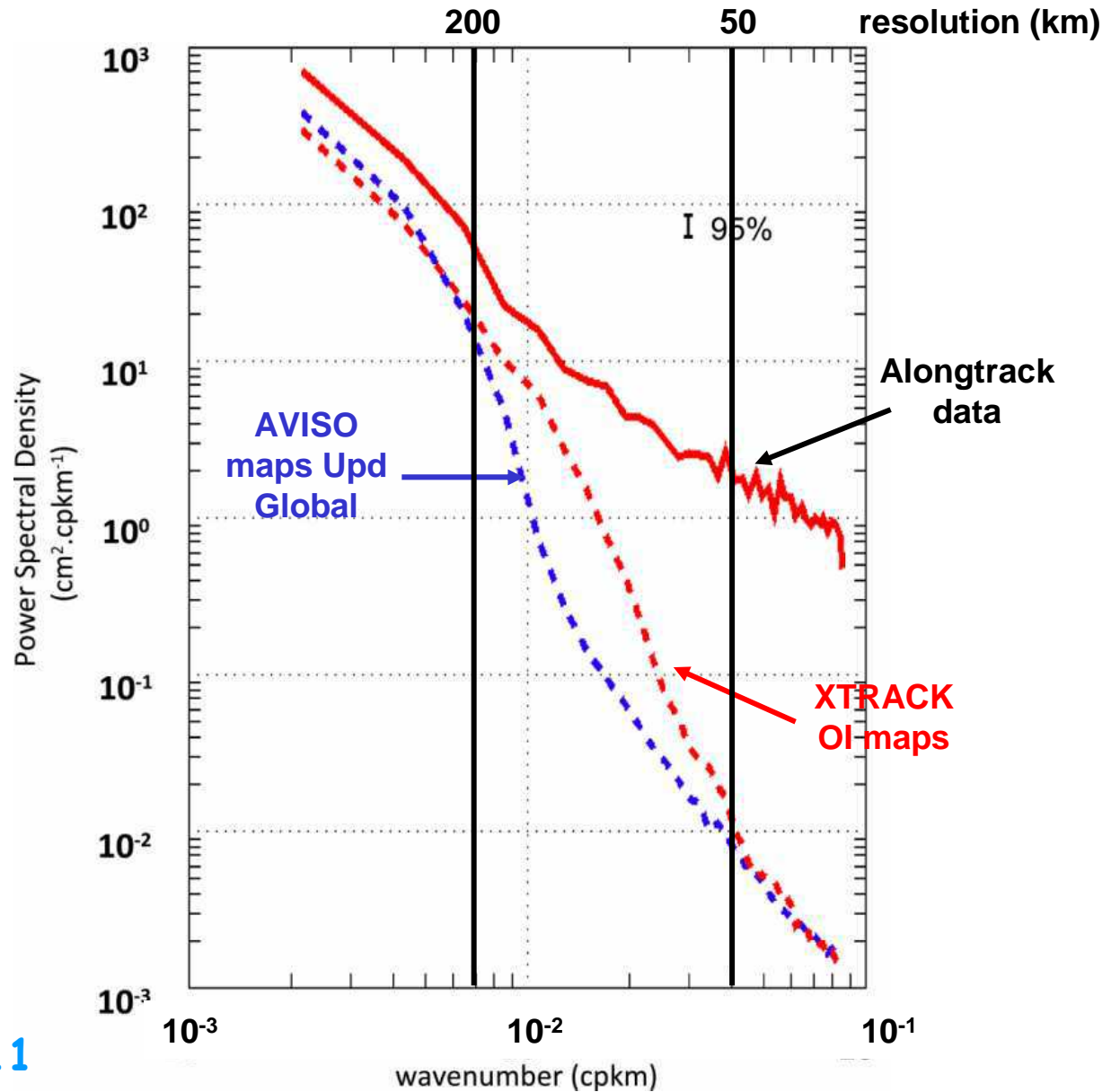
Gridded multi-mission maps for regional application (Bay of Biscay):
→ Finer-scale structures in regional maps



From Dussurget et al., 2011

Observability of mesoscale dynamics in 2D gridded SLA maps

Spatial Power Spectrum
(2002-2005)



From Dussurget et al., 2011

Perspectives

- Regional CAL/VAL activities: analysis of AltiKa performance.
- Work on optimal processing and post-processing strategy for AltiKa altimetric data in marginal seas.
- Add AltiKa data in our regional archives.
- Development of advanced multi-satellite altimetric products for marginal seas.
- Analysis and characterisation of the sea level variability (mesoscale and sub-mesoscale) observed in the coastal regions.