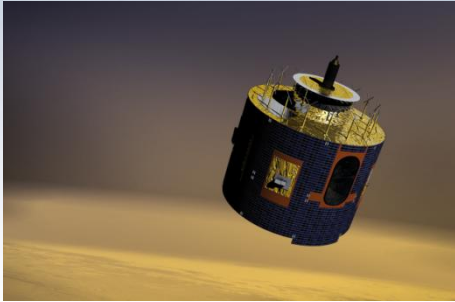


SARAL/AltiKa NRT Workshop: EUMETSAT Processing Centre



EUMETSAT - Monitoring Weather and Climate from Space



Meteosat-7
Meteosat-8, Meteosat-9, Meteosat-10
Geostationary Satellites



Metop-A, Metop-B
Mid-morning Polar Orbiting Satellites

Partner:



Jason-2
Ocean Surface Topography

Partners:



EUMETSAT and Marine Data Services



**Scatterometer
ocean surface winds**

**Sea ice edge, drift,
concentration and type**

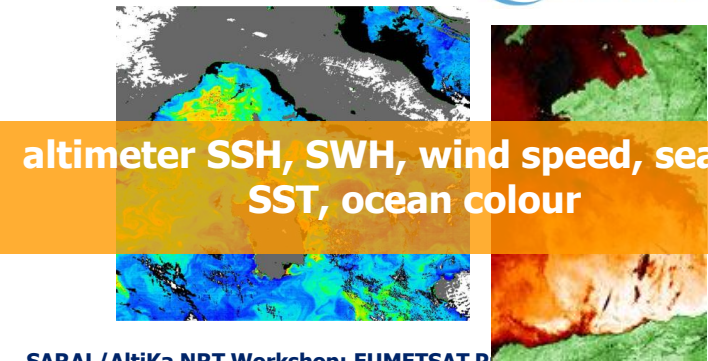
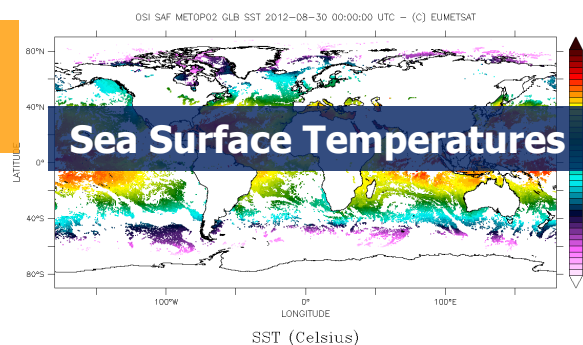
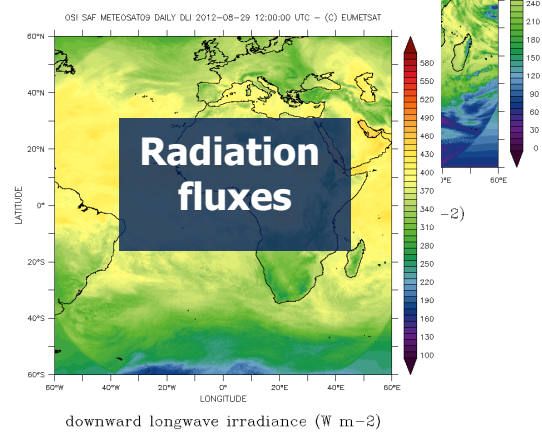
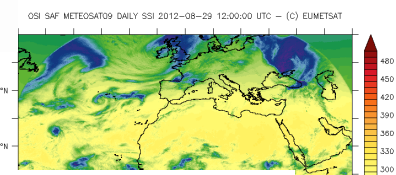
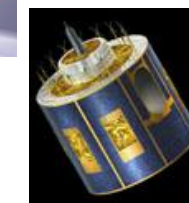
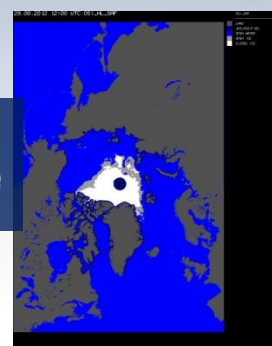
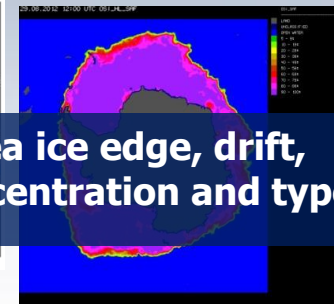
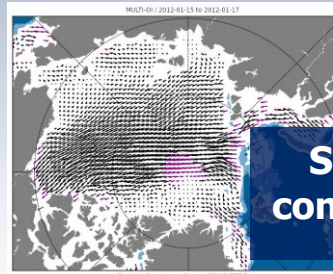
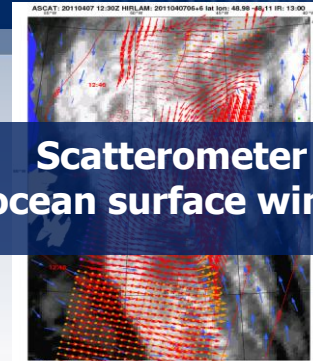
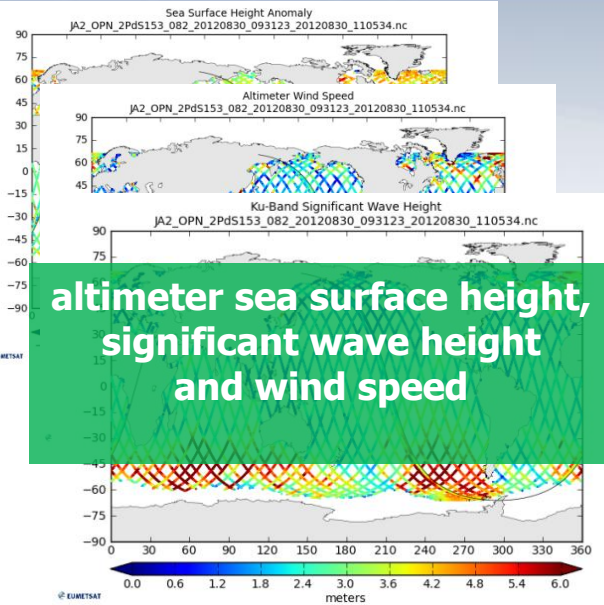
**altimeter sea surface height,
significant wave height
and wind speed**

**SPACE
SEGMENT**

**Radiation
fluxes**

**altimeter SSH, SWH, wind speed, sea ice,
SST, ocean colour**

Sea Surface Temperatures



**SARAL/AltiKa NRT Workshop: EUMETSAT Processing Centre
EUM/OPS-JAS/VWG/13/719406, 27-29 August 2013**





EUMETSAT's Role in SARAL



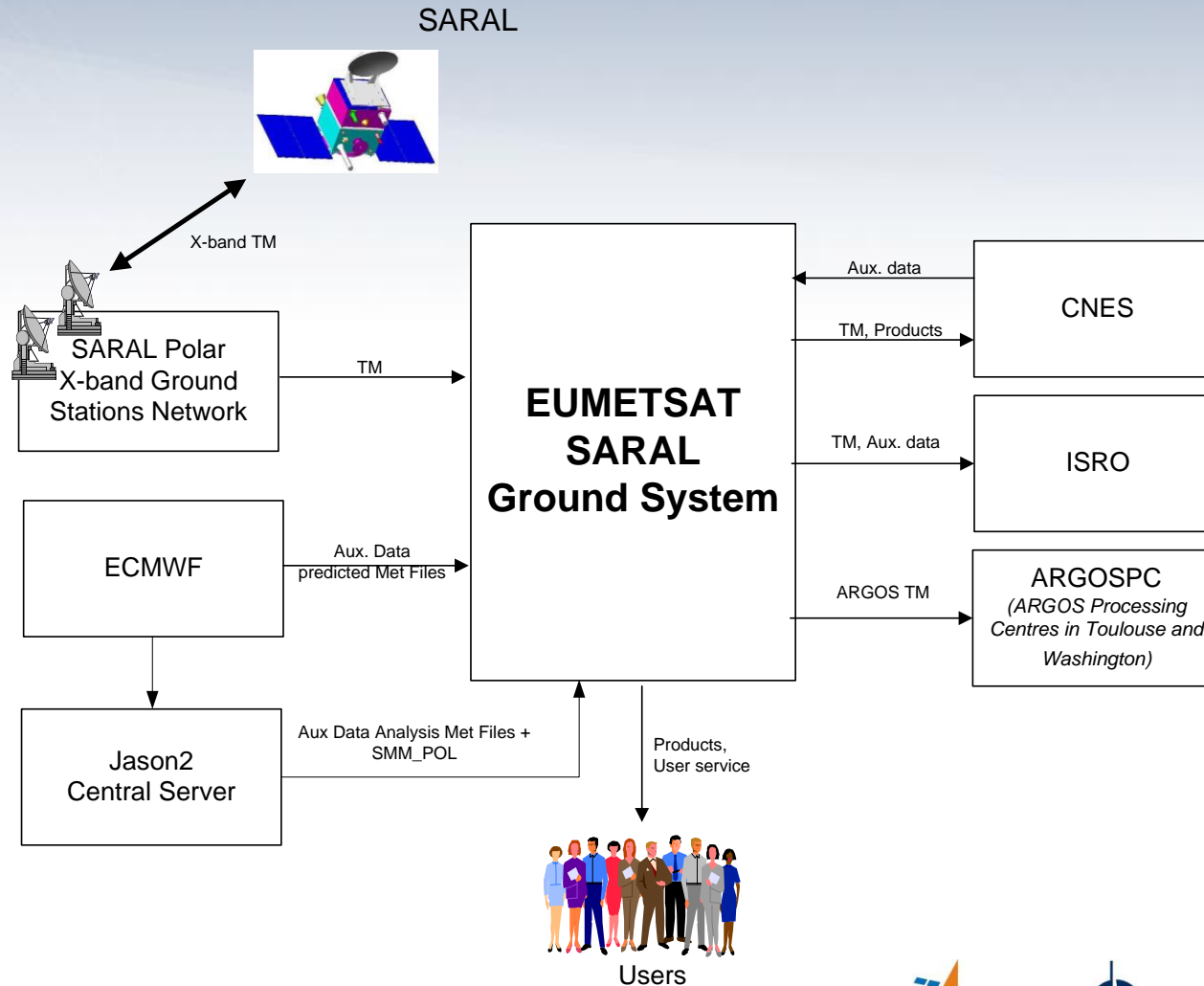
➤ SARAL/AltiKa

- Distribution of SARAL/AltiKa payload data and auxiliary data to CNES and to ISRO
- NRT processing of SARAL/AltiKa payload instrument data
 - OGDR
 - OGDR-SSHA
 - OGDR-BUFR
- NRT dissemination of the SARAL/AltiKa products via EUMETCast and GTS, to users outside of India
- Archiving on NRT data in the Data Centre

➤ SARAL/ARGOS

- Distribution of ARGOS-3 payload data and auxiliary data to the Toulouse and Washington ARGOS processing centres
- TM to ARGOS processing centres

EUMETSAT SARAL Ground Segment





SARAL/AltiKa Data Services in NRT



- Dissemination to end users via EUMETCast
 - Two formats:
 - NetCDF Files: OGDR and OGDR-SSHA
 - OGDR-BUFR
 - Timeliness: 75% of the data in 3 hours from sensing, 95% in 5 hours from sensing
 - Data available since 23-July-2013
 - More details on access on the next slides

- Dissemination on GTS (Global Telecommunications System operated by National Meteorological Services of the World Meteorological Organisation WMO)
 - Only OGDR-BUFR
 - Tables were provided to PIs, still need formal approval by WMO
 - Availability date: towards end of September 2013



What is EUMETCast

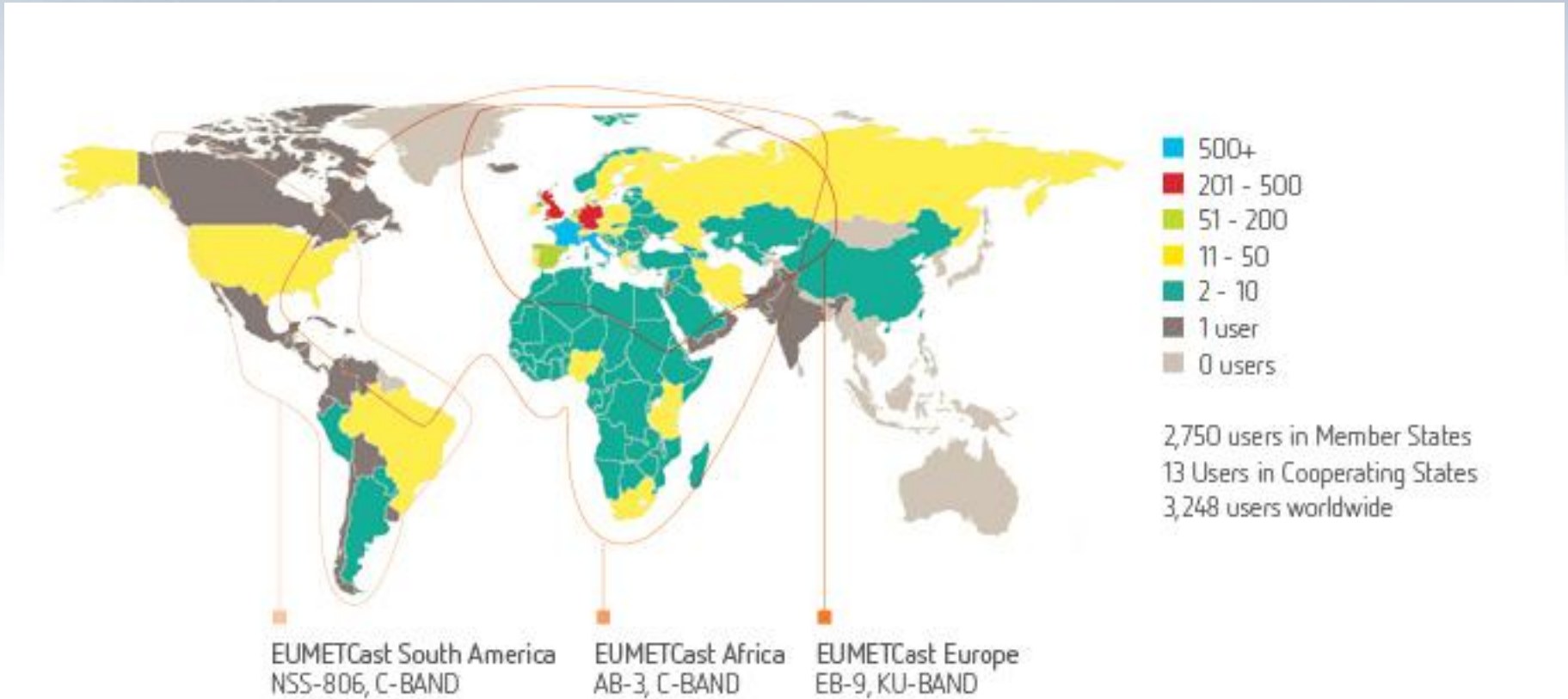


A system delivering Real-time DATA to users on three continents

- EUMETCast is a multi-service distribution system based on standard Digital Video Broadcast (DVB) technology. It uses commercial telecommunication satellites to multicast files (data and products) in real-time, over three continents (Europe, Africa, the Americas) to users equipped with inexpensive VSAT terminals.
- EUMETCast is used to distribute EUMETSAT data and products but also a wide range of third-party meteorological and environmental products from our Member States and international partners, including in-situ observational data, numerical weather forecasts, and global and regional marine meteorological and ocean surface products. The one-stop-shop delivery mechanism allows users to receive many data streams via one low cost reception station.
- After registering on the EOP, users are able to access the service and manage their data subscriptions through an application to the EUMETCast Key Unit.
- EUMETCast currently delivers data streams to more than several thousands of users and VSAT terminals, in a fully operational and secure manner, with high flexibility to handle various formats and scalability to accommodate additional data.
- Read more at:
<http://www.eumetsat.int/website/home/AboutUs/WhatWeDo/DistributingData/index.html> and
at: <http://www.eumetsat.int/website/home/Data/DataDelivery/EUMETCast/index.html>



EUMETCast Coverage





EUMETSAT Users Service



- The EUMETSAT Product Navigator is the catalogue for all EUMETSAT data and products, including third-party products disseminated via EUMETCast. Use the PN to search and order data and subscribe to EUMETCast services.
Look for SARAL data via <http://navigator.eumetsat.int/discovery/Start/Explore/Quick.do>
- They are accessible off-line in the archive via the Earth Observation Portal (EOP) at <https://eoportal.eumetsat.int/userMgmt/login.faces>
- Questions are to be addressed to EUMETSAT's User Services at ops@eumetsat.int