



# Saral GDR Quality Assessment Report

## Cycle 106

*30-01-2017 / 06-03-2017*

Prepared by :	G.Jettou , CLS A.Ollivier , CLS JC. Poisson , CLS	
Accepted by :	DT/AQM , CLS	
Approved by :	A. Guillot , CNES	



# 1. Introduction

## 1.1. Document overview

---

The purpose of this document is to report the major features that characterize the quality of Saral/AltiKa's data. It is released on a cyclic basis following data dissemination.

The objectives of this document are:

- To provide a quality assessment of Saral/AltiKa GDRs (over ocean).
- To provide users with necessary information for data processing.
- To report any changes likely to impact data quality at any level, from instrument status to software configuration.
- To show the main results for the current cycle.

## 1.2. Software version

---

This cycle has been produced with the following Processing Software references :

*L1 library=V4.5p1, L2 library=V5.5p2, Processing Pilot=V5-0p1p2p3*

The results presented in this report have been performed over GDR products in version T (using patch2).

**Several flags or algorithms are not yet tuned and have to be used with caution.** A detailed description of the products can be found in the Saral/AltiKa user handbook ([1]). The details of patch2 are listed in [section Content of Patch2](#).

## 1.3. Cycle quality and performances

---

Data quality for this cycle is nominal.

Analysis of crossovers and sea surface variability indicate that system performances are close to the usual values obtained with Jason-2/Jason-3's data.

For this cycle, the crossover standard deviation is 6.26 cm. When using a selection to remove shallow waters (1000 m), areas of high ocean variability and high latitudes ( $> |50|^\circ$ ) it lowers down to 5.22 cm .

The standard deviation of Sea Level Anomalies (SLA) relative to the mean sea surface is 9.76 cm. When using a selection to remove shallow waters (1000 m), areas of high ocean variability and high latitudes ( $> |50|^\circ$ ) it lowers down to 8.63 cm .

- Performances related to crossover differences are detailed in the dedicated [section Crossover statistics](#).
- Detailed CALVAL results are presented in [section 3](#).
- Note that two inclination maneuvers took place during cycle 6, which brought Saral/AltiKa to the Envisat repeat ground track (inclination around  $81.50^\circ$ ).
- Note that since cycle 25, POE-E orbit standard has been applied.
- The Mean Sea Surface used to compute Sea Level Anomaly is :
  - MEAN\_SEA\_SURFACE.MODEL.CNESCLS11 for cycle 1 to 33,
  - MEAN\_SEA\_SURFACE.MODEL.CNESCLS15 from cycle 34 onwards.
- Note that the repetitive ground track phase ends on cycle 35, the drifting phase starts cycle 100.

During this cycle the following events occurred :  
Modification of the AGC computation loop.

#### **1.4. Information about tracking mode**

---

Saral/AltiKa is able to track the signal with several onboard tracker algorithms: Median, EDP (Earliest Detectable Part) and Diode/DEM. Median mode is similar to the one used by Envisat and for most cycles of Jason-2. EDP tracker should improve the tracker behavior above continental ice surfaces and hydrological zones. The analysis conducted during the commissioning phase concluded that the median mode is better in average. Finally, Diode/DEM mode is a technique using information coming from Diode and a digital elevation model available onboard. It was already tested on Jason-2. For more information about the various onboard tracker algorithms see [4].

The information about the acquisition / tracking mode used is available in the GDR products (fields `alt_state_flag_acq_mode_40hz` and `alt_state_flag_tracking_mode_40hz`).

During this cycle, Saral/AltiKa used the following acquisition/tracking modes:

- Passes 1 to 1002 : DIODE acquisition / median tracking

## 2. Data coverage and edited measurements

This section shows the main results that illustrate the quality of SARAL/Altika's GDR products during this cycle. The following verifications are systematically run on a cyclic basis, which eventually gives access to long term monitoring of missing and edited measurements.

### 2.1. Missing measurements

---

Cycle 106 has no missing pass but, track 25 is partially missing (14 %) over land due to the AGC modification upload (from 31/01/2017 10:15:00 to 10:21:45).

Missing measurements (relative to a theoretical nominal ground track) are shown figure 1.

The map below illustrates missing 1Hz measurements in the GDRs, with respect to a 1Hz sampling of the nominal track of 1002 passes. Missing measurements occur over land, essentially over regions with high relief. This is mainly related to altimeter tracking performances over sloping terrain.



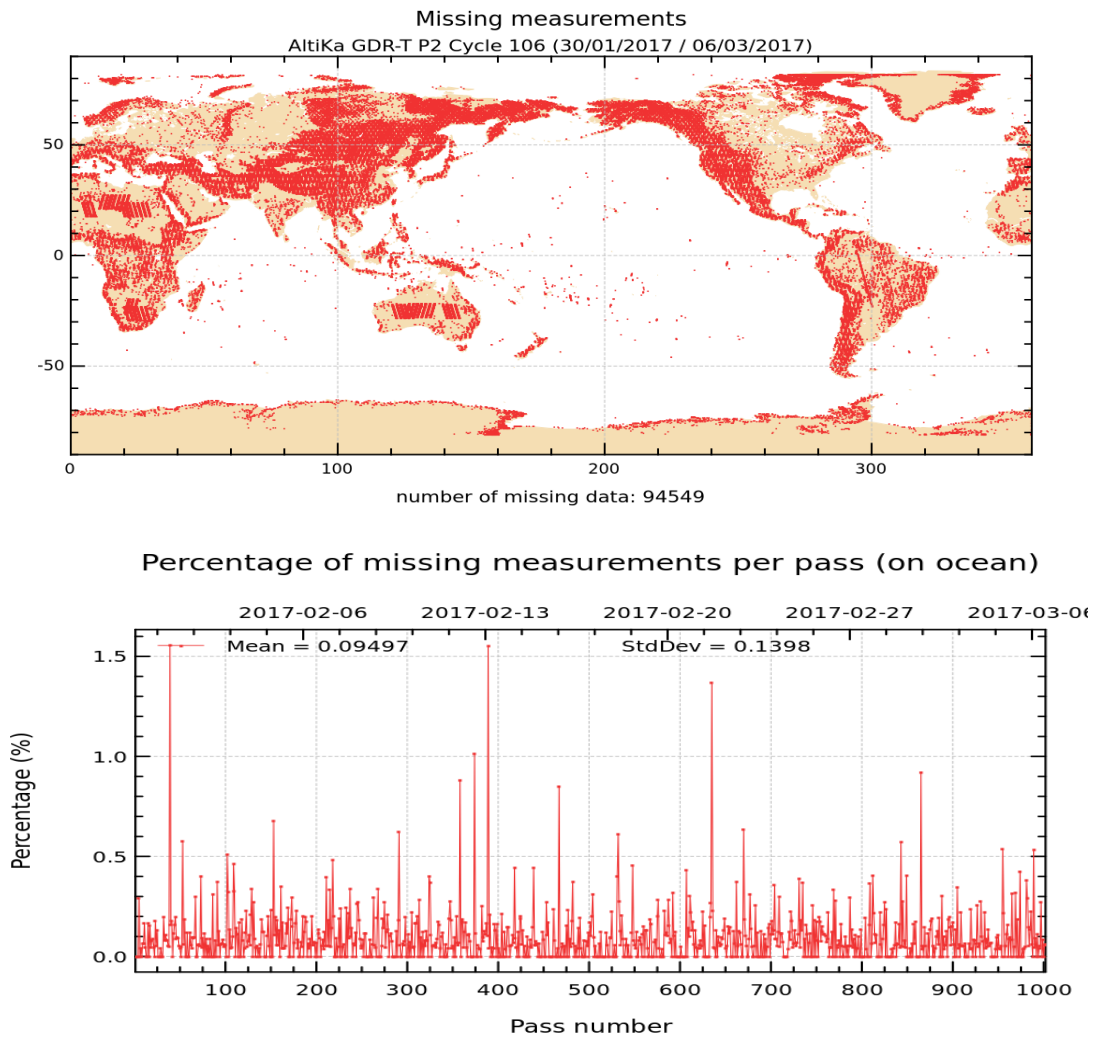


Figure 1: Map of missing measurements for cycle 106 on top. Monitoring of percentage of missing ocean measurements per pass on bottom.

## 2.2. Edited measurements

Editing criteria are defined for the GDR product in Saral/AltiKa Product Handbook [1].

The editing criteria are defined as a minimum and a maximum threshold for various parameter. Measurements are rejected if one parameter does not lie within those thresholds. These thresholds are expected to remain constant throughout the mission, so that monitoring the number of edited measurements allows a survey of data quality.

In the following, only measurements over ocean are surveyed. It is done by keeping all the data which surface\_type is equal to 0 (+ the Caspian Sea).

One should bear in mind that this selection has no impact on the global performance (land + ocean) since the most significant results are derived from analyses in open ocean areas.

The number and percentage of removed points are given for each criterion on the following table. Note that these statistics are obtained using measurements already edited by ice flag, that has already removed 14.84 % of ocean points.

Parameters	Min thresh- old	Max threshold	Unit	Nb removed	% re- moved	% mean
Sea surface height	-130	100	m	7516	0.46	0.47
Sea level anomaly	-2	2	m	12362	0.75	0.80
Nb measurements of range	20	DV		16232	0.98	1.11
Std. deviation of range	0	0.2	m	21803	1.32	1.48
Square off nadir angle	-0.2	0.0625	deg <sup>2</sup>	5247	0.32	0.31
Dry tropospheric correction	-2.5	-1.9	m	0	0.00	0.00
Combined atmospheric correction	-2	2	m	0	0.00	0.00
MWR wet tropospheric correction	-0.5	0	m	913	0.06	0.06
Significant wave height	0	11	m	5950	0.36	0.38
Sea State Bias	-0.5	0.0025	m	4947	0.30	0.29
Backscatter coefficient	3	30	dB	5384	0.33	0.34
Nb measurements of sigma0	20	DV		15237	0.92	1.04
Std. deviation of sigma0	0	1	dB	14254	0.86	0.93
Ocean tide	-5	5	m	2745	0.17	0.18
Equilibrium tide	-0.5	0.5	m	2698	0.16	0.17
Earth tide	-1	1	m	0	0.00	0.00
Pole tide	-0.15	0.15	m	0	0.00	0.00
Altimeter wind speed	0	30	m/s	4947	0.30	0.29
Global statistics of edited measurements by thresholds	–	–	–	36743	2.23	2.53

Table 1: *Table of parameters used for editing. ' % mean ' is the mean percentage of removed points computed over the 8 first cycles.*

The measurements rejected during the editing process are shown in figure 2. They are mainly located in ice-covered areas and in regions with a disturbed sea state.

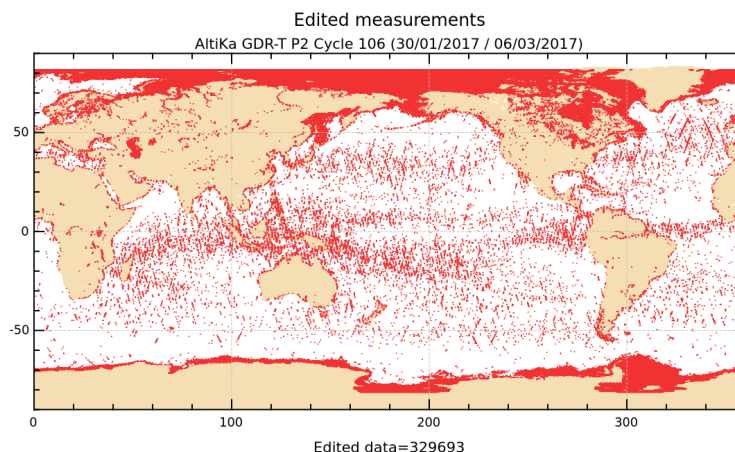


Figure 2: Edited measurements for cycle 106.

Map in figure 3 represents the percentage of valid measurements. As it is shown, wet zones or zones covered with ice are regions with significantly less valid data, as it was also the case for Topex and Jason altimeters : measurements are corrupted by rain or ice. They were removed since they are out of the specified thresholds. There is slightly less data edited with Saral/AltiKa than with Jason-2.

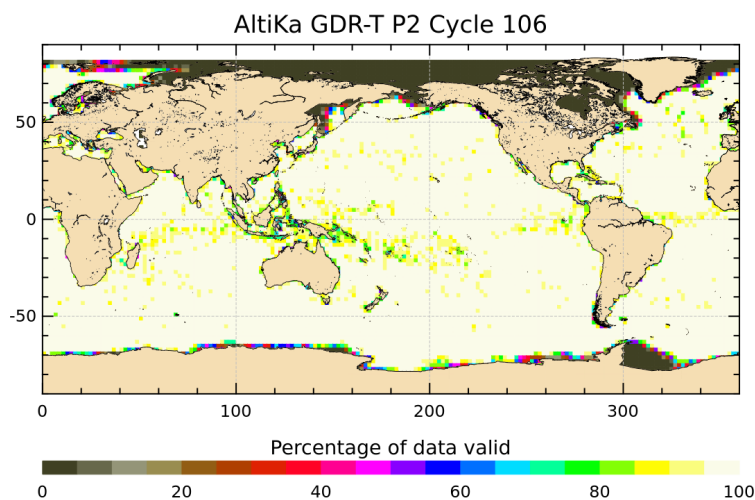


Figure 3: Percentage of valid measurements for cycle 106.

Note that a new configuration of the AGC computation loop is used from cycle 106 onward. It results in a decrease of saturated echoes statistics mainly over ice and rivers areas. No impact on oceans geophysical metrics has been observed.

### 3. Instrumental and geophysical parameter analysis

The monitoring of instrumental and geophysical parameters is crucial to detect potential drifts or jumps in long-term time series. The verification of these parameters is very carefully followed up and comparison are often made with Jason-2/Jason-3.

#### 3.1. AltiKa altimeter and sensor

##### 3.1.1. Sensor status

A detailed assessment of the mission's sensor (AltiKa) is made in a separate bulletin, which is available on request ([6]).

##### 3.1.2. AltiKa altimeter status

This section gives a status of the main instrumental-related variations for the mission's Ka-band altimeter (AltiKa). Two calibration modes are used to monitor the altimeter internal drifts and compute the altimeter parameters. They are programmed about three times per day, over land (desert areas).

The CAL1 mode measures the Point Target Response (PTR) of the altimeter. Among the parameters extracted from the PTR :

- the internal path delay
- the total power of the PTR

The CAL2 mode measures the low pass filter of the altimeter. The evolution of internal path delay and total power of the PTR are plotted to monitor the aging of the altimeter.

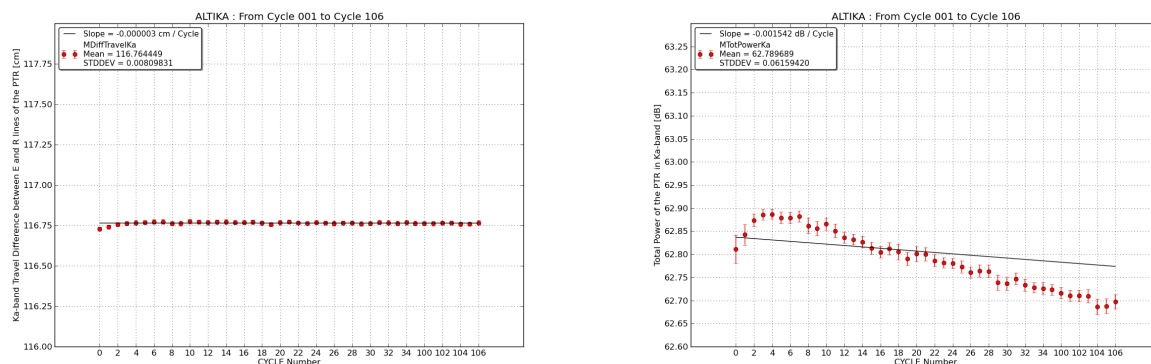


Figure 4: Internal path delay (left) and total power of the PTR (right) for Ka-band.

Note that in the Saral/AltiKa products, the range is corrected with the internal path delay and the backscatter coefficient takes into account the total power of the measured PTR.

### 3.2. Significant wave height

Figure 5 shows wave heights derived from altimeter measurements. SWH data are averaged over a  $2^\circ \times 2^\circ$  grid and smoothed afterwards. As shown in the map, wave height can reach several meters.

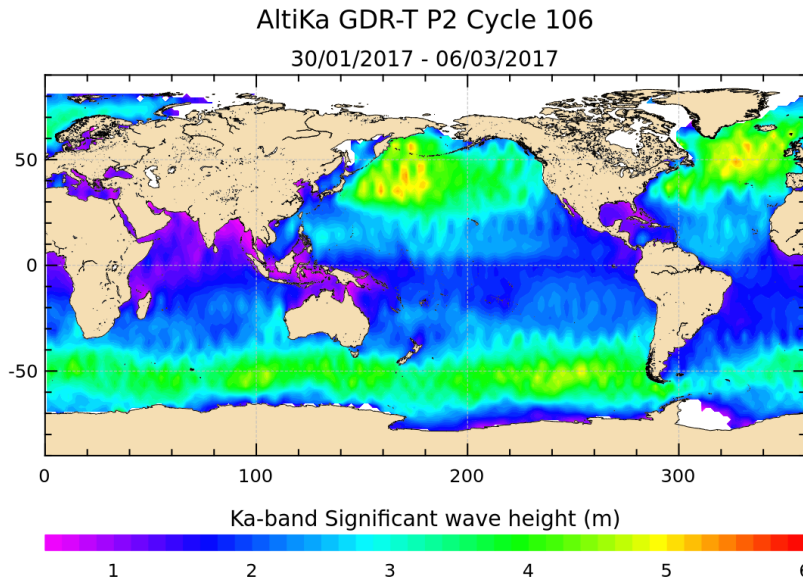


Figure 5: Significant wave height for cycle 106.

The daily average of Ku-band SWH for Jason-2, Jason-3 and Ka-band SWH for Saral/AltiKa is plotted on figure 6.

They show similar features. Note that when computing latitude weighted statistics (not shown here), SARAL/AltiKa significant wave height is generally slightly higher than Jasons' SWH.

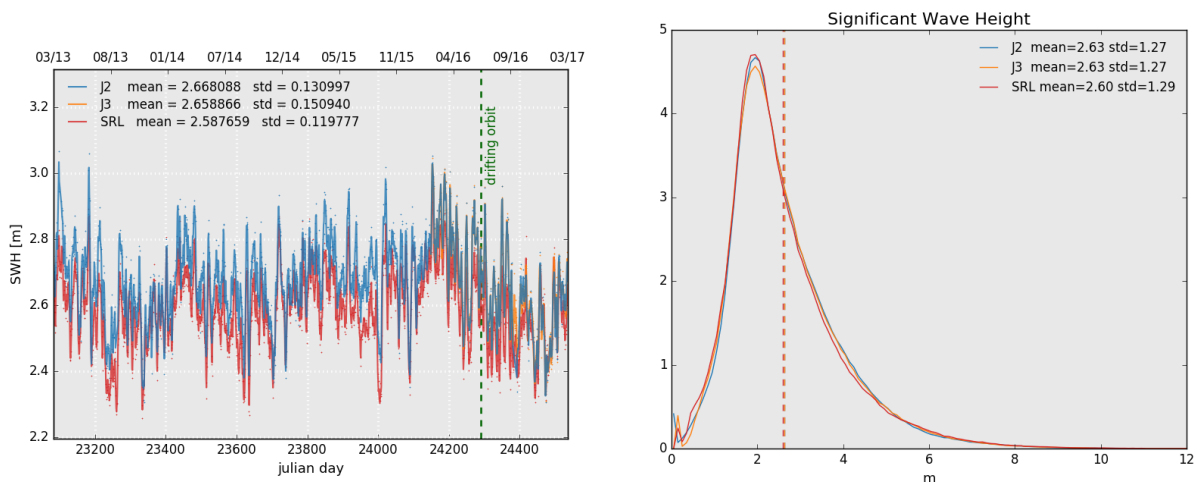


Figure 6: Daily monitoring of significant wave height for AltiKa (Ka-band) Jason-2 and Jason-3 (Ku-band) on the left and histogram for cycle 106 on the right (limited to  $66^\circ$  latitude).

### 3.3. Backscattering coefficient

The daily average of the backscattering coefficient for Saral/AltiKa (Ka-band), Jason-2 and Jason-3 (Ku-band) is plotted as a function of time on figure 7. Note that due to the different frequencies, Saral/AltiKa backscattering coefficient is not simply shifted by a bias, but their histograms have also different forms. Note that the atmospheric attenuation is available in the Saral/AltiKa products and the backscattering coefficient takes it into account (as it is similarly done for Jason-2 / Jason-3).

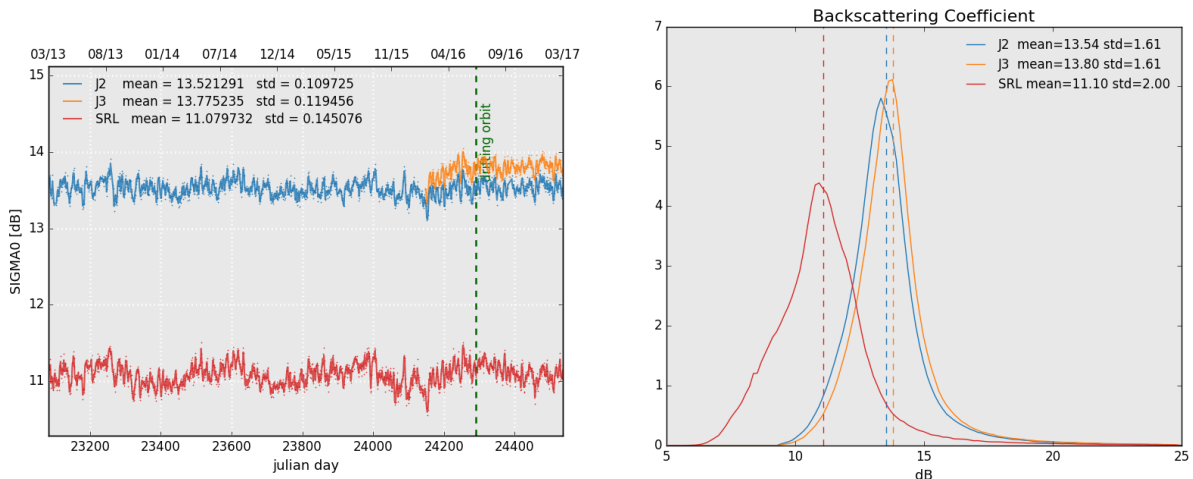


Figure 7: Daily monitoring of backscattering coefficient for Saral/AltiKa, Jason-2 and Jason-3 on the left and histogram for cycle 106 on the right (limited to 66° latitude).

### 3.4. Ionosphere correction

As Saral/AltiKa has a mono-frequency altimeter in Ka-band, it is not possible to compute a bifrequency ionosphere correction derived from altimeter data. Nevertheless considering only the frequency, the ionosphere correction in Ka-band should approximately be 7 times lower than the one in Ku-band. The daily average of dual-frequency ionosphere correction for Jason-2/3 and GIM ionosphere correction for Saral/AltiKa is plotted on figure 8.

Note that a scale-factor of  $(Freq_{Ku}/Freq_{Ka})^2$  was applied to Jason missions values in this figure, in order to facilitate comparisons between the missions ( even though local times and altitude of Jason-2/3 and AltiKa data are not the same).

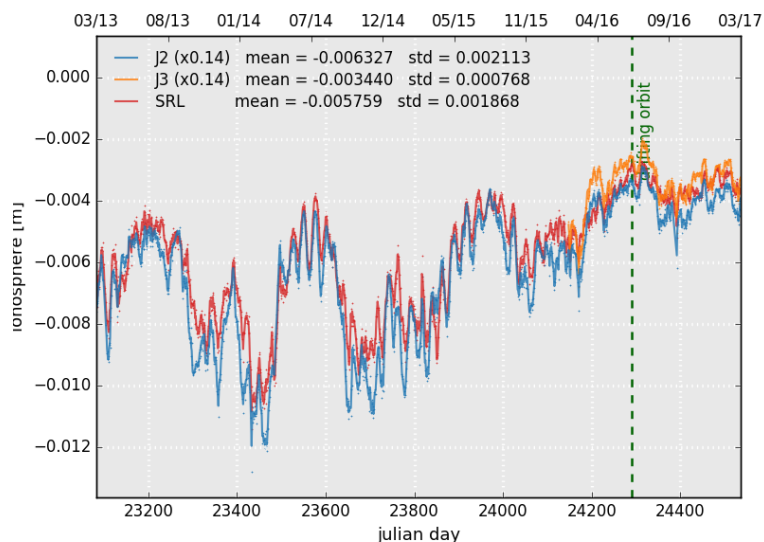


Figure 8: Daily monitoring of dual-frequency ionosphere correction for Jason-2 Jason-3 and GIM ionosphere correction for Saral/AltiKa.

### 3.5. Altimeter wind speed

Figure 9 shows wind speed estimations derived from altimeter measurements. Data from the current cycle are averaged over a  $2^\circ \times 2^\circ$  grid and smoothed afterwards. Altimeter wind speed for AltiKa GDR-T Patch2 version is estimated with the algorithm of Lillibrige et al. [5], which is based on Abdalla wind speed algorithm [2].

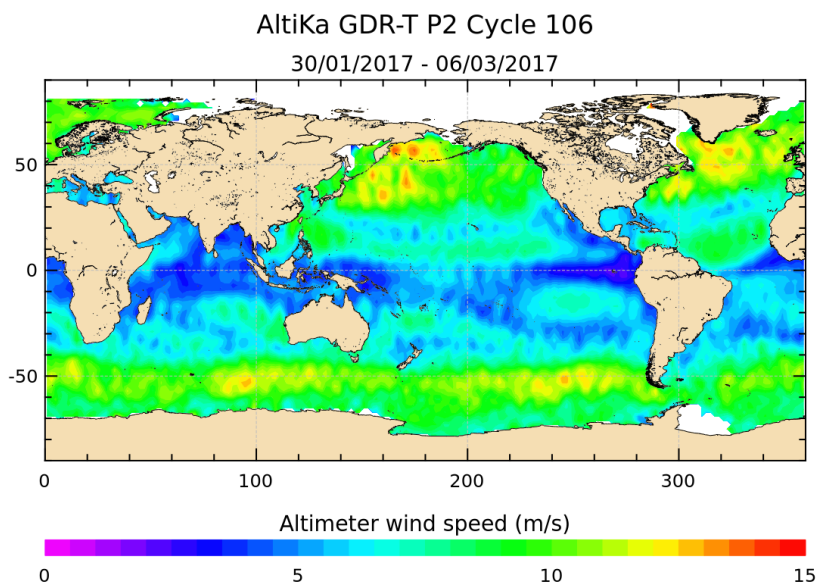


Figure 9: Altimeter wind speed for cycle 106.



figure 10. The histogram is shown on the right side. AltiKa's wind speed histogram starts around 1 m/s (as other altimeter's wind speeds based on Abdalla's algorithm). A kind of bi-modal behavior can be observed (see also [8]), otherwise Jasons' AltiKa's altimeter wind speed are similar.

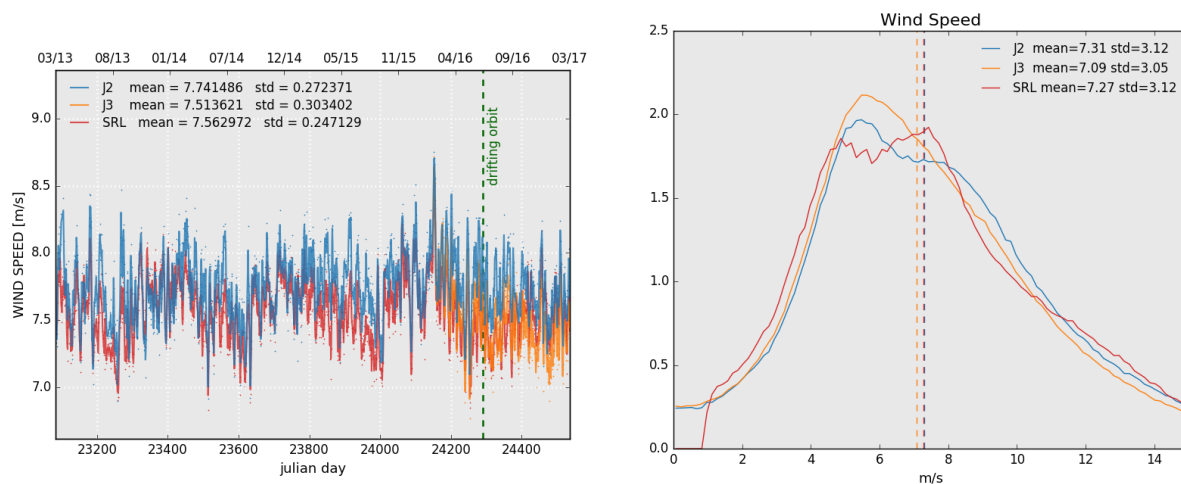


Figure 10: Daily monitoring of altimeter wind speed for Saral/AltiKa, Jason-2 and Jason-3 on the left and histogram for cycle 106 on the right (limited to 66° latitude).



### 3.6. Radiometer parameters

Figure 11 shows the mean value of wet troposphere correction difference (radiometer - ECMWF) for the current cycle.

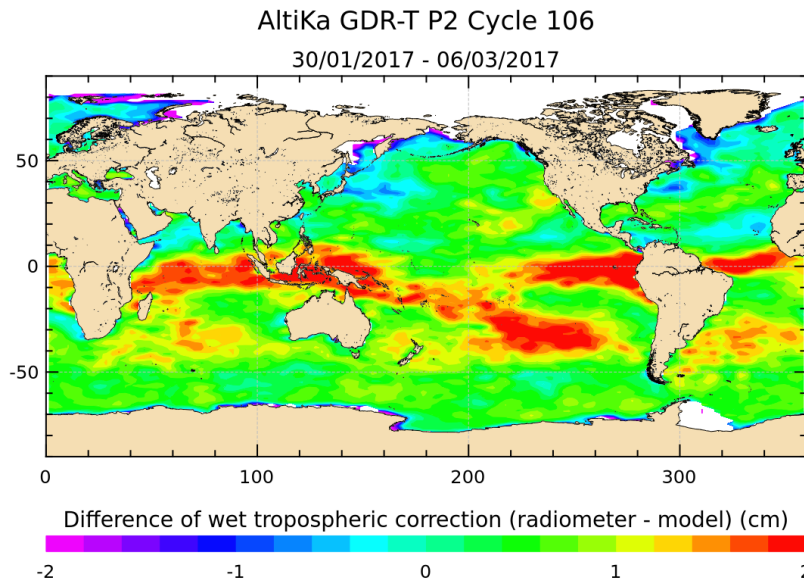


Figure 11: Mean of wet troposphere correction difference (Radiometer-ECMWF model) for cycle 106.

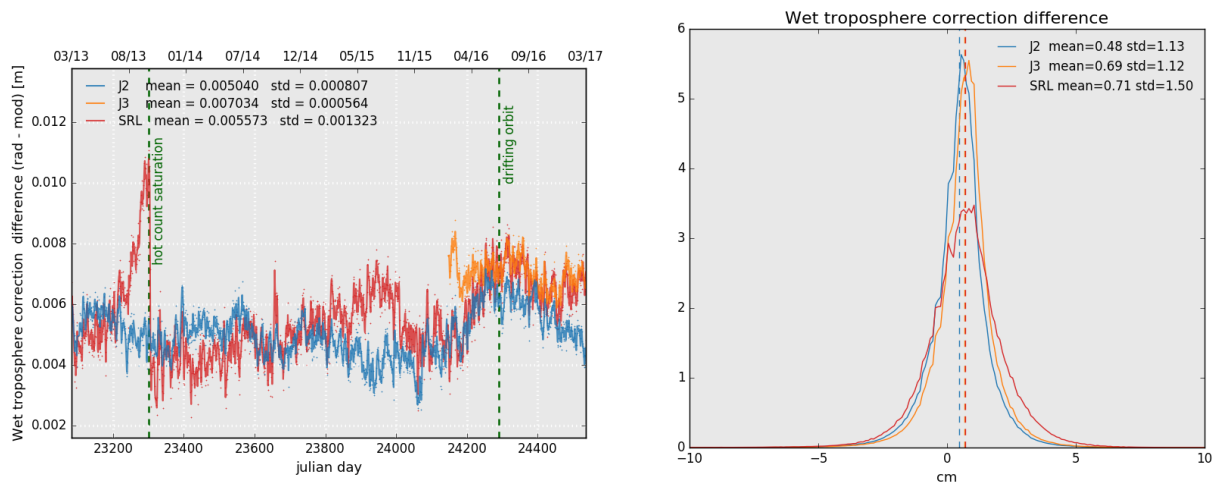


Figure 12: Daily monitoring of wet troposphere differences (Radiometer-ECMWF model) for Saral/AltiKa Jason-2 and Jason-3 (left) and histogram on the right (limited to 66° latitude) for cycle 106 .

For the current version of GDRs, linear relations have been computed between the measured brightness temperatures and the simulated ones. These linear relations are applied on the 23.8 GHz and 37 GHz channels. Furthermore a bias is applied on the backscattering coefficient while computing radiometer wet troposphere correction.

The radiometer wet troposphere correction is globally quite consistent with the model, but the standard deviation of the difference are quite differente between Saral/AltiKa and Jason missions, which is expected since Saral/AltiKa has a Ka band dual-frequency radiometer whereas Jasons have a three-frequency Ku band radiometer.

Note that the standard deviation of the wet troposphere difference is reduced in Patch2 compared to Patch1. Further work is ongoing to improve the retrieval algorithms of the radiometer wet troposphere correction .

Note that in summer/fall 2013 (till 2013-10-22), a saturation of the hot calibration counts occurred, which had an impact on the 37 GHz brightness temperature (and the parameters based on it, see left of figure [12](#)). This was not an instrumental problem, but rather an issue related to onboard parameterization.

### 3.7. Mispointing

Figure 13 shows the mean value of the mispointing angle.

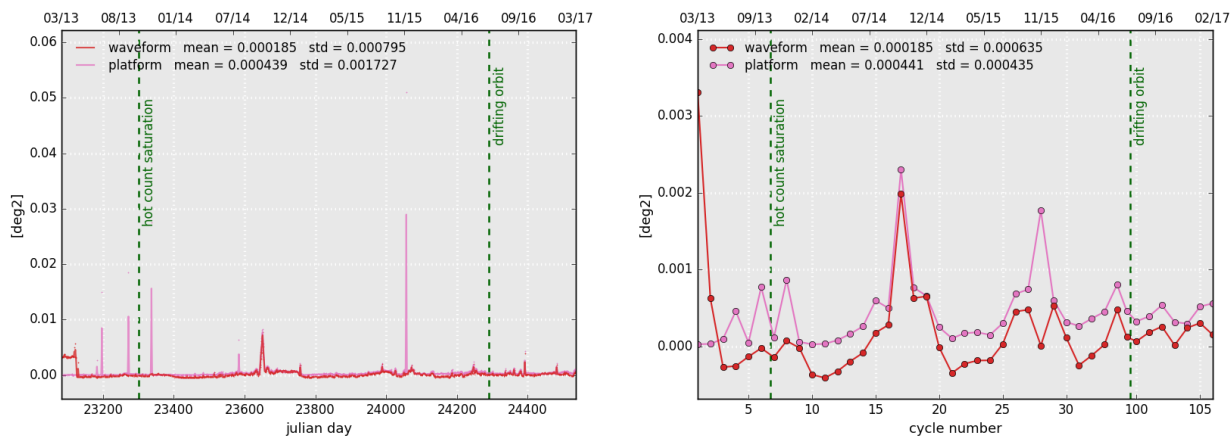


Figure 13: *Daily (left) and cyclic (right) monitoring of SARAL/AltiKa's mispointing angle SARAL/AltiKa : comparison between the one derived from waveform retracking and the one measured by platform star-trackers.*

## 4. Crossover Analysis

### 4.1. Overview

SSH crossover differences are computed as a difference of SSH values at the crossing point between an ascending and a descending track. Crossover differences are systematically analyzed to estimate the quality of the products and the mission's performances. SSH crossover differences are computed with a valid dataset on a cyclic basis. The tracks time lag cannot exceed 10 days, in order to limit the effects of ocean variability which can be a source of error in the estimation. The mean of SSH crossover differences should be close to zero and standard deviation should ideally be small.

Nevertheless SLA varies also within 10 days, especially in high variability areas. Models of several geophysical corrections are less precise in high latitude due to lower data availability thanks to seasonal ice coverage. Therefore an additional geographical selection - removing shallow waters, areas of high ocean variability and high latitudes ( $> |50|^\circ$ ) - is applied for cyclic monitoring.

### 4.2. Maps of SSH crossover differences

The map of the mean differences at crossovers (averaged over a  $4^\circ \times 4^\circ$  grid) is plotted for the current cycle figure 14.

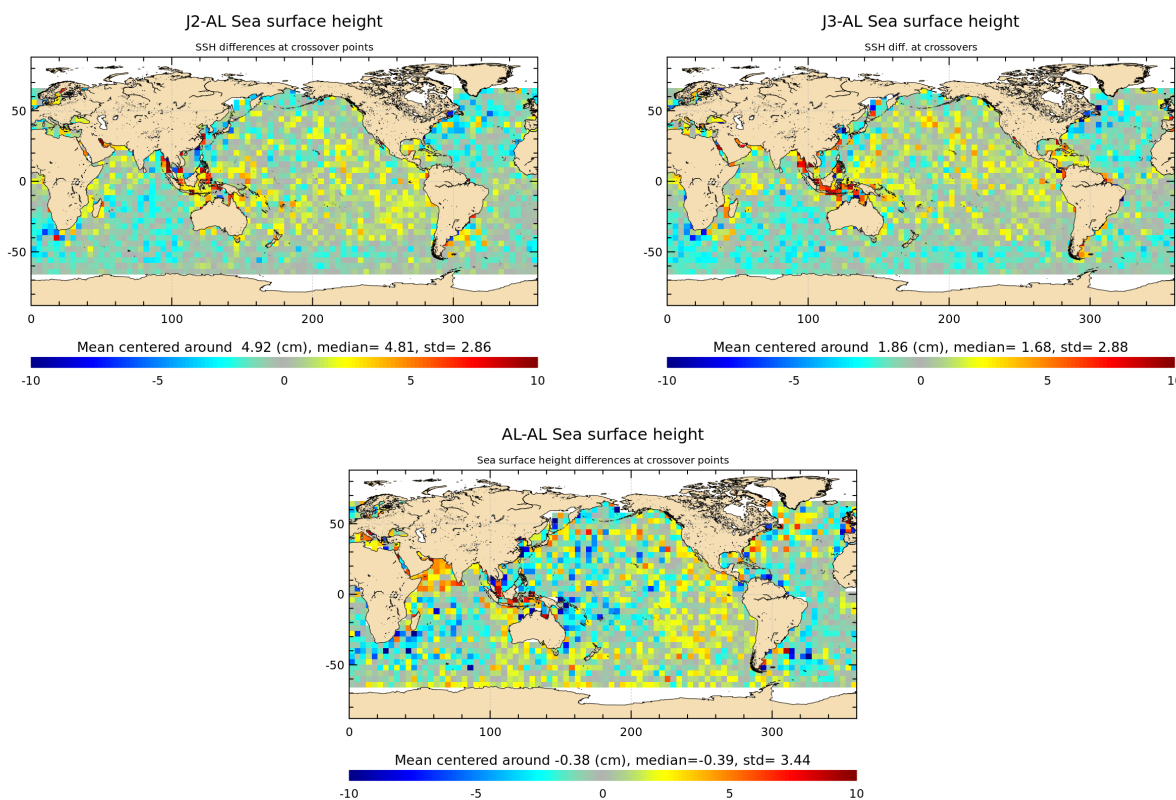


Figure 14: Mean of multi-mission SSH at crossovers (up) J2 Vs AL (right) and J3 Vs AL (left) and mono-mission SSH at crossovers (bottom) for cycle 106.

When applying additional geographical selection, removing shallow waters, areas of high ocean variability and high latitudes ( $> |50|^\circ$ ), the mono-mission box-averaged crossovers's standard deviation is of 2.60 cm.

### 4.3. Cycle by cycle monitoring

The mean and standard deviation of SSH differences at crossovers are plotted for Saral/AltiKa, Jason-2 and Jason-3 as a function of time on top of figure 15. The statistics are computed after data editing and using the geographical selection criteria mentioned earlier, that is to say  $|\text{latitude}| < |50|^\circ$ , bathymetry  $< -1000$  m, ocean variability (computed over several years)  $< 0.2$  m.

Note that statistics are computed for each cycle based on Saral/AltiKa's cycle numbering. Data number may therefore vary between the missions (due to a different number of missing/edited measurements). The plot at the bottom of 15 is computed by space averaging crossover differences in  $4^\circ \times 4^\circ$  resolution boxes.

This is done in order to reduce the weight of crossover points in high latitudes since there are much more crossover points in high and very high latitudes than in mean and low latitudes, especially for Jason-2.

Saral/AltiKa and Jason-2/Jason-3 show similar performances. Using the radiometer wet troposphere correction improves the coherence between ascending and descending tracks (standard deviation of SSH differences at crossovers points is reduced) for both Jason-2 and Saral/AltiKa. Without box averaging Saral/AltiKa has slightly better performances than Jason-2, with box averages (in order to reduce the weight of the numerous crossover points in high latitudes) Jason-2 has slightly better performances than Saral/AltiKa.

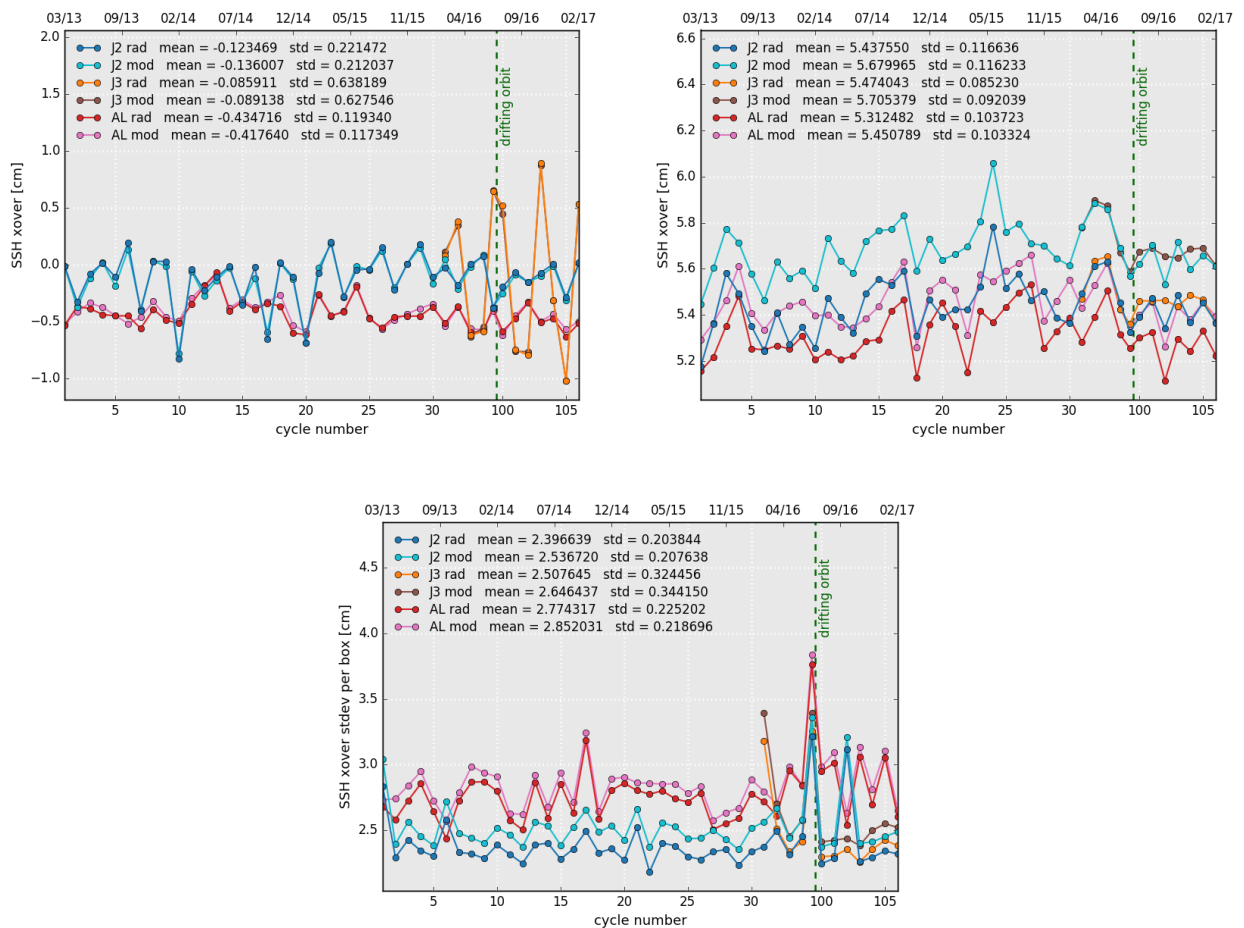


Figure 15: Cyclic monitoring of mean (left) and standard deviation (right) of SSH differences at crossovers using the geographical selection criteria for Saral/AltiKa Jason-2 and Jason-3. Box averaged standard deviation of SSH differences at crossover (bottom).

Figure 16 shows the mean and the standard deviation of Jason-2 / AltiKa and Jason-3 / AltiKa 10-days SSH crossovers using radiometer wet troposphere correction and ECMWF wet troposphere correction model. The bias between Jason-2 and AltiKa is around 4.6 cm and 1.7 cm between Jason-3 and Saral/AltiKa when using wet troposphere correction model. Using radiometer wet troposphere correction reduces the standard deviation at multi-mission crossover points (right of figure 16).

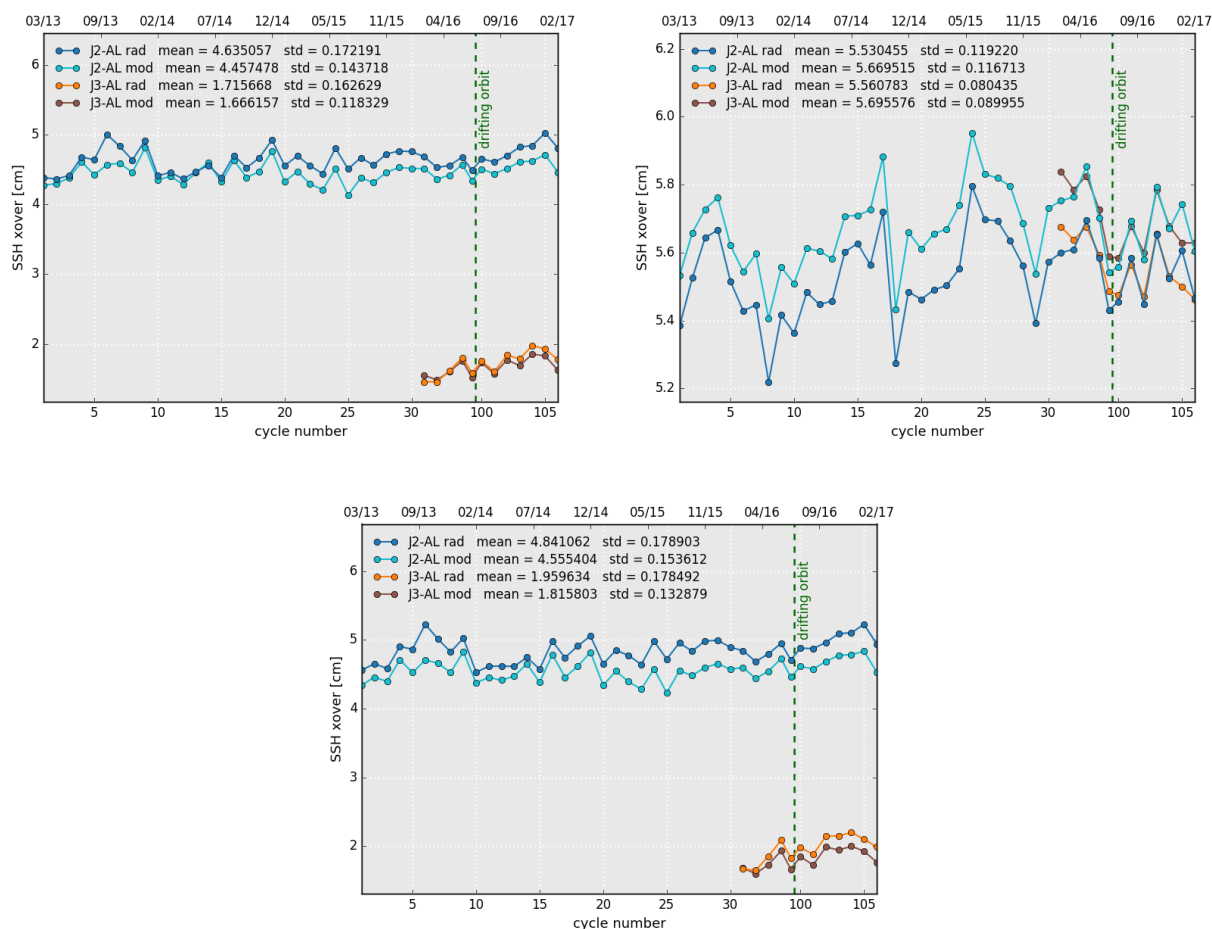


Figure 16: Cyclic monitoring of mean (left) and standard deviation (right) of Jason-2 / AltiKa Jason-3 / AltiKa SSH differences at crossovers using geographical selections. Box-averaged differences (bottom).

#### 4.4. Comparison of pseudo time tag bias

The pseudo time tag bias is found by computing at SSH crossovers a linear regression between the SSH and the satellite radial speed ( $\dot{H}$ ), also referred to as orbital altitude rate :

$$SSH = \alpha \dot{H}$$

This method allows us to estimate the time tag bias but it absorbs also other errors correlated with  $\dot{H}$  as for instance orbit errors. That is why it is called "pseudo" time tag bias.

The Jason satellites had a pseudo datation bias close to -0.28 milliseconds with an approximately 60-days signal. The origin of this pseudo time tag bias of the Jason satellites was found by CNES in 2010 [3]. It has a mean of about -0.25 milliseconds and is dependent on the altitude of the satellite. For Jason-2 GDR-D data, the datation was directly modified in order to correct it properly, whereas for Jason-1 GDR-C product it is taken into account thanks to a correction (pseudo\_datation\_bias\_corr\_ku). Therefore the average of the pseudo datation bias is now close to zero for the Jason satellites, nevertheless the periodic signal remains and is not yet explained.

Figure 17 shows the monitoring of the pseudo datation bias for Saral/AltiKa (35 days), Jason-2 (10 days) and Jason-3 (10 days) on a cyclic basis. Saral/AltiKa shows a small negative pseudo time-tag bias.

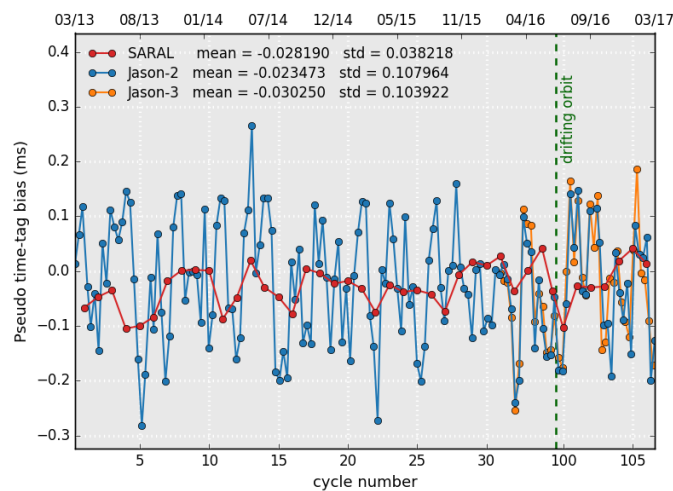


Figure 17: Cyclic monitoring of pseudo time tag bias for Saral/AltiKa.



## 5. Along track analysis

### 5.1. Sea Level Anomaly

#### 5.1.1. Temporal analysis

The monitoring of mean SLA for Saral/AltiKa Jason-2 and Jason-3 is presented on figure 18 left. The mean bias between Saral/AltiKa and Jason-2 is around 4.9 cm whereas it is around 2.9 cm between Saral/AltiKa and Jason-3 (when using model wet troposphere correction). Note that the mean sea surface standard has evolved to an improved version on cycle 34, resulting in a visible 2.5 cm drop in the mean SLA.

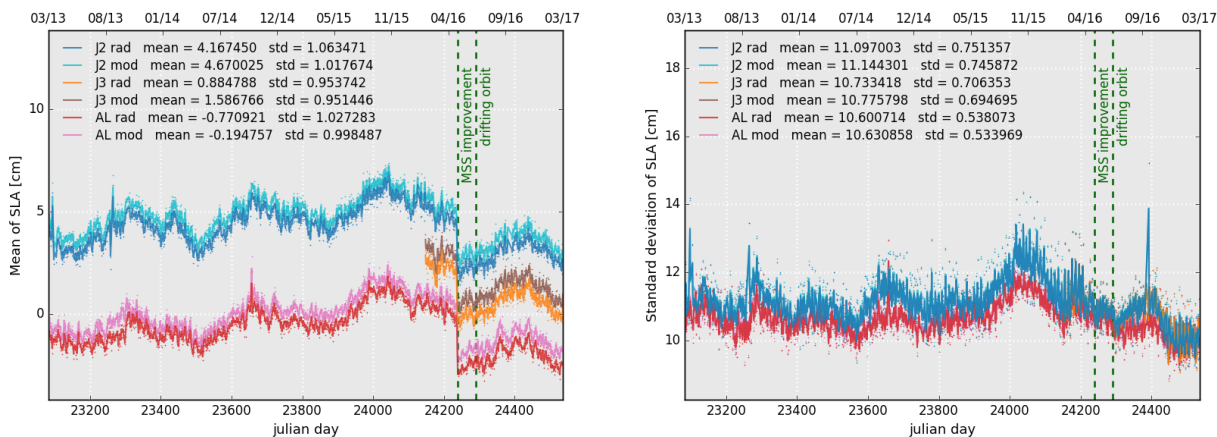


Figure 18: Daily monitoring of the mean (right) and standard deviation (left) of SLA for Saral/AltiKa, Jason-2 and Jason-3.

#### 5.1.2. Maps

Figure 19 shows the map of Saral/AltiKa's SLA.

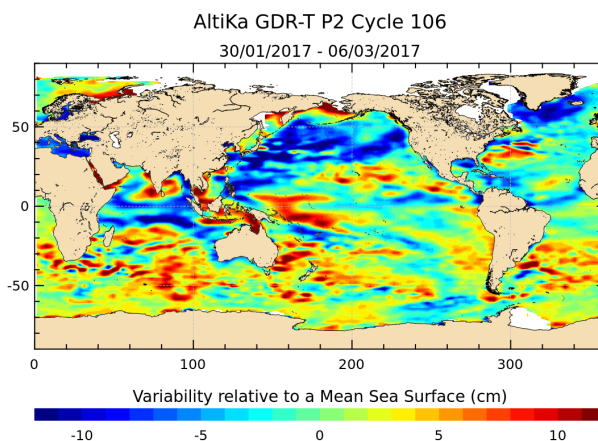


Figure 19: Sea level anomaly relative to MSS for cycle 106.

Figure 20 permits to point out areas where the SLA is higher than 30 cm (after editing and centering the Saral GDR Quality Assessment Report **Cycle 106** 30-01-2017 / 06-03-2017

SALP-RP-P2-EA-22250-CLS106



data). A part from isolated points, high SLA are as expected located in high ocean variability areas.

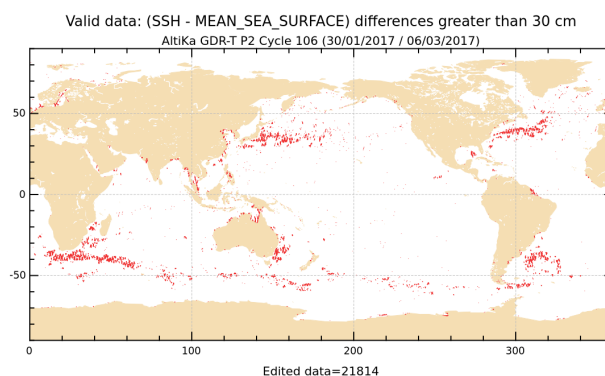


Figure 20: SLA higher than 30 cm for cycle 106.

As Saral/AltiKa and Jasons are not on the same ground track SLA measurements are first averaged over the same grid to compute SLA differences between the missions.

This difference is quite noisy for one cycle (see left of figure 21 and 22), since sea state varies a lot especially in regions of high ocean variability. Right side of these figures shows therefore an average over several cycles, the maps are less noisy indeed, and high variability regions as Gulf Stream and Antarctic circumpolar current are still visible.

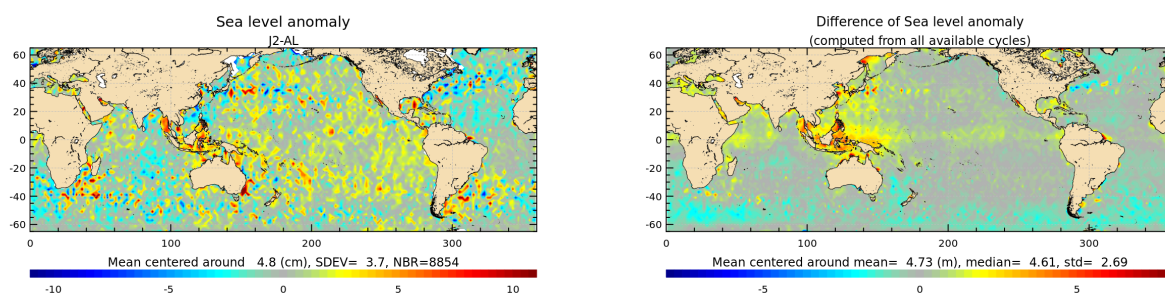


Figure 21: Jason-2 – Saral/AltiKa SLA differences for cycle 106 (left) and averaged over the whole Saral/AltiKa period (right).

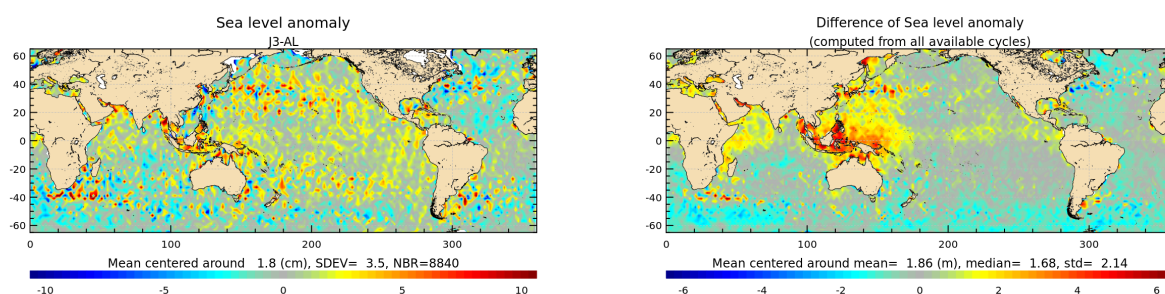


Figure 22: Jason-3 – Saral/AltiKa SLA differences for cycle 106 (left) and averaged over the whole Saral/AltiKa period (right).

## 6. Content of Patch1

Hereafter the content of Patch1 is recalled. IGDR data were produced with this patch from cycle 4 pass 395 onwards till cycle 10 pass 565.

**Altimeter calibration file :** The altimeter calibration stability has been analyzed. Based on the actual data, we have implemented an averaging of the calibrations over a 7 days window for the low pass filter (identical to Jason-2) and 3 days for the internal path delay and total power (not used on Jason-2). This will slightly reduce the daily noise observed in the altimeter calibration data.

**Altimeter characterization file :** We have updated the altimeter characterization file using the flight calibration of the gain values (4 calibrations performed). The impact is very small (of the order of 0.01 dB).

**Retracking look-up tables :** We have updated the ocean retracking look-up tables using the flight calibration data (PTR). The impact is very small on the range and sigma0 values but of the order of 15 cms on SWH for low sea states.

**MQE :** We have analyzed the altimeter flight data and based on the observed MQE values over ocean a threshold of  $2.3E-3$  (Jason-2 value is  $8E-3$ ) is used for the 1Hz data computation.

**Neural network :** A first linear relation has been computed between the measured BT and the simulated one. This linear relation is applied on the 23.8 GHz only – the same analysis will be conducted on the 37 GHz and sigma0. This generates a bias on the radiometer wet tropospheric correction which is now much more consistent with the model one.

**Atmospheric attenuation :** The value outputted by the neural algorithm is now recorded in the level2 products (it was set to 0 at the beginning of the mission). Rad\_water\_vapor and rad\_liquid\_water: The values have been corrected to comply with the actual unit in the level2 products ( $kg/m^2$ ). But the rad\_liquid\_water remains not reliable as an anomaly has been noticed in the neural network.

**SSHA :** The radiometer wet tropospheric correction is now used to compute this value (the model value was used at the beginning of the mission).

**Controls parameters :** The threshold values have been updated with the flight data. This is a first tuning – additional work is necessary.

## 7. Content of Patch2

Hereafter the content of Patch2 is recalled. All GDR data were produced or reprocessed (cycles 1 to 7) with this patch in order to have a homogeneous dataset, whereas IGDR data were only produced with this patch from cycle 10 pass 566 onwards.

**Wind look-up table :** The table provided by NOAA is used. This table is only based on the measured  $\sigma_0$ , taking into account the atmospheric attenuation ( $\sigma_0$  at the surface). (Reference: Lillibridge et al. [5])

**SSB look-up table :** The table provided by R. Scharroo is used (same method as in [7]). We use only the significant wave height to compute the SSB.

**Radiometer neural algorithm :** Taking into account several months of AltiKa measurements, the neural network coefficients have been updated. Note that this modifies the radiometer related parameters (radiometer wet troposphere correction, atmospheric attenuation, radiometer liquid water content and radiometer water vapor content).

**Ice-2 retracking algorithm :** The algorithm has been updated taking into account the AltiKa Ka band specificities (ice2 algorithm was based on ENVISAT Ku band experience).

**FES2012 tide model :** This new tide model is included, improving the SSH accuracy in coastal zones. (Reference : [www.aviso.altimetry.fr/en/data/products/auxiliary-products/global-tidefes2description-fes2012.html](http://www.aviso.altimetry.fr/en/data/products/auxiliary-products/global-tidefes2description-fes2012.html)).

**Matching pursuit algorithm :** The algorithm based on J. Tournadre proposal has been tuned to comply to AltiKa Ka band specificities.

**MQE parameter scale factor :** The scale factor of the MQE has been modified.

**Update of the altimeter characterization file :** The altimeter characterization file has been modified in order to account for 63 values of altimeter gain control loop (AGC). This has impacts over sea ice and land hydrology, in some cases the AGC was set to default value in current P1 products.

**Doris on ground processing (Triode) :** The Doris navigator ground processing has been upgraded to reduce the periodic signal observed on the altitude differences with MOE/POE.

**Equilibrium long-period ocean tide height :** The equilibrium long-period ocean tide height (`ocean_tide_equil`) is now at default values over land, but also lakes and inland seas (such as Caspian Sea). Furthermore some ocean data close to land are also at default value. As the geocentric ocean tide height (`ocean_tide_sol1`) includes `ocean_tide_equil`, `ocean_tide_sol1` is also at default value in the same places as `ocean_tide_equil`.

**Non-equilibrium long-period ocean tide height :** The non-equilibrium long-period ocean tide height (`ocean_tide_non_equil`) of Patch2 is different from the one in Patch1, as it is now computed with FES2012 algorithm, instead of previously FES2004 algorithm.

## 8. References

### References

- [1] SARAL/AltiKa Products handbook, December 2013 *SALP-MU-M-OP-15984-CN* edition 2.4. Available at: [http://www.aviso.altimetry.fr/fileadmin/documents/data/tools/SARAL\\_Altika\\_products\\_handbook.pdf](http://www.aviso.altimetry.fr/fileadmin/documents/data/tools/SARAL_Altika_products_handbook.pdf)
- [2] Abdalla, S., 2007. Ku-band radar altimeter surface wind speed algorithm. *Proc. of the 2007 Envisat Symposium*, Montreux, Switzerland, 23-27, April 2007, Eur. Space Agency Spec. Publ., ESA SP-636.
- [3] Boy, François and Jean-Damien Desjonqueres. 2010. Note technique datation de l'instant de reflexion des échos altimètres pour POSEIDON2 et POSEIDON3 *Reference: TP3-JPOS3-NT-1616-CNES*
- [4] J.-D. Desjonqueres, G. Carayon, N. Steunou, and J. Lambin, 2010. Poseidon 3 Radar Altimeter: New Modes and In-Flight Performances. *Marine Geodesy*, **33(S1)**, 53-79. See: <http://www.tandfonline.com/doi/abs/10.1080/01490419.2010.488970#.UjBdPLzCwUE>
- [5] Lillibridge, J., Scharroo, R., Abdalla, S., and Vandemark, D. (2013) One-and Two-Dimensional Wind Speed Models for Ka-band Altimetry. *Journal of Atmospheric and Oceanic Technology*. doi: <http://dx.doi.org/10.1175/JTECH-D-13-00167.1>
- [6] J. Poisson et al.: AltiKa Instrument Quality Assessment Report Cycle 106. SALP-RP-MA-EA-22233-CLS-106.
- [7] Scharroo, R., and J. L. Lillibridge. Non-parametric sea-state bias models and their relevance to sea level change studies, in *Proceedings of the 2004 Envisat & ERS Symposium*, Eur. Space Agency Spec. Publ., ESA SP-572, edited by H. Lacoste and L. Ouwehand, 2005.
- [8] R. Scharroo, J. Lillibridge, S. Abdalla, and D. Vandemark. Early look at SARAL/AltiKa data. Oral presentation at OSTST 2013, Boulder, USA. Available at [http://www.aviso.altimetry.fr/fileadmin/documents/OSTST/2013/oral/Scharroo\\_Early\\_look\\_at\\_SARAL.pdf](http://www.aviso.altimetry.fr/fileadmin/documents/OSTST/2013/oral/Scharroo_Early_look_at_SARAL.pdf)