



# Jason-2 GDR Quality Assessment Report

Cycle 321

*15-03-2017 / 15-03-2017*

**Jason-2 entered SAFE HOLD MODE on 2017-03-15 at 19 :19 :58**

Prepared by :	H. Roinard , CLS S. Labroue , CLS J-C. Poisson , CLS	
Accepted by :	DT/AQM , CLS	
Approved by :	T. Guinle , CNES	



# 1. Introduction

## 1.1. Document overview

---

The purpose of this document is to report the major features of the data quality from the Jason-2 mission. The document is associated with data dissemination on a cycle per cycle basis.

This document reports results from Jason-2 GDRs.

The objectives of this document are :

- To provide a data quality assessment
- To provide users with necessary information for data processing
- To report any change likely to impact data quality at any level, from instrument status to software configuration
- To present the major useful results for the current cycle

## 1.2. Software version

---

This cycle has been produced with the Processing Software V4-5p1. The results presented in this report have been performed with GDR products in version D. Particularly, the monitoring over Jason-2 period are homogeneous and computed with GDR-D data. A detailed description of the products can be found in the Jason-2 user handbook ([2]). The CalVal analysis of the GDR version D product performed (containing comparison with GDR version T products) on the tandem phase (cycles 001 to 020) can be found in the report [3].

## 1.3. Jason-2 interleaved ground-track

---

Jason-2 was moved from its original groundtrack to its new interleaved groundtrack on October 2016 : October 2nd at 11 :53 UTC (end of cycle 303) the Poseidon3 altimeter is put in WAIT mode. During move to interleaved ground track, there is no more measurement until the end of the orbit change nominal sequence scheduled until 13-10-2016 at 20 :00 :00 (cycle 305, pass 164).

## 1.4. Cycle quality and performances

---

Data quality for this cycle is nominal.

Analysis of crossovers and sea surface variability indicate that system performances are close to usual values that are obtained from TOPEX/POSEIDON or Jason-1 data. For this cycle, the crossover standard deviation is 4.01 cm rms. When using a selection to remove shallow waters (1000 m), areas of high ocean variability and high latitudes ( $> |50|$  deg.) it decreases down to 3.29 cm rms.

The standard deviation of Sea Level Anomalies (SLA) relative to a 7-year mean (based on T/P data) is 9.34 cm. When using a selection to remove shallow waters (1000 m), areas of high ocean variability and high latitudes ( $> |50|$  deg) it lowers to 8.50 cm .

- Performances from crossover differences are detailed in the dedicated [section Crossover statistics](#).
- Detailed CALVAL results are presented in [section 3](#).
- Note that since 5th of April 2013, platform moduleB has been used.
- Note that since cycle 227, GPS-B has been used.
- Note that since cycle 254, POE-E orbit standard has been applied.
- Note that since cycle 305, Jason-2 has been on interleaved orbit.

During this cycle the following events occurred :

- Abnormal gyros status triggered a SAFE HOLD MODE starting at 2017-03-15 19 :19 :58.
- Due to SHM, the CNG calibration of 2017-03-24 has been cancelled

## **1.5. Information about tracking mode**

---

Jason-2 is able to track data with several onboard tracker algorithms : SGT, Median and Diode/DEM. SGT is the same tracker as the one used for Jason-1. It was only used during the very first days of Jason-2. Median mode is similar to the one used by Envisat. Finally, Diode/DEM mode is a new technique using information coming from Diode and a digital elevation model available onboard. For more information about the different onboard tracker algorithms see [6].

During this cycle, Jason-2 used median mode.

## **1.6. End of scientific mission for Jason-1**

---

Jason-1 turned into two successive safe hold modes in February and March 2012, so that the Jason-1 last measurement on its repetitive orbit was on 2012-03-03 12 :59 :12. In the following, it was decided to move Jason-1 to a geodetic orbit. Jason-1 science data on the geodetic orbit are available from 07-05-2012 16 :00 :01 to 21-06-2013 00 :56 :54.

**Since Jason-2 cycle 183, there are no results or comparisons with Jason-1 data.**

Contact was lost with the Jason-1 spacecraft at some point after the last good downlink at 0114 UTC on 21 June 2013. It was determined that a non-recoverable failure with the A-side transmitter was the cause of the anomaly. A similar loss of contact with Jason-1 occurred in September 2005, when the B-side transmitter tied to Processor Module B (PMB) failed, resulting in the loss of the half-satellite. There was no remaining transmitter redundancy on Jason-1 and no other means for the spacecraft to downlink science telemetry. Jason-1 was passivated and decommissioned on 01 July 2013, with the last command sent at 16 :37 :40 UTC ; terminating the Jason-1 mission after 11.5 years of operations. After 53,535 orbits, the Jason-1 science data mission ended on 21 June 2013 – four days after the successful completion of the first full 406-day geodetic cycle on 17 June 2013, at sub-cycle 537.

**Note that in this report, comparisons with Jason-1 use GDR-E version of data.**

## 2. Data coverage and edited measurements

This section presents results that illustrate data quality during this cycle. These verification products are produced operationally so that they allow long term monitoring of missing and edited measurements.

### 2.1. Missing measurements

Due to SHM, most of pass 18 and passes 19 to 254 are missing. Missing measurements relative to a nominal ground track are plotted on figure 1.

The map below illustrates missing 1Hz measurements in the GDRs, with respect to a 1 Hz sampling of a nominal repeat track.

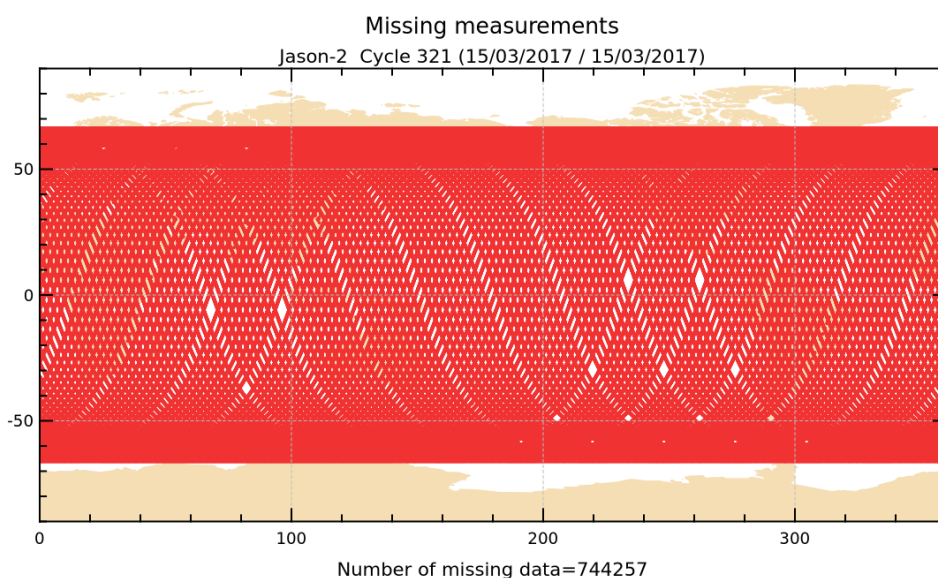


FIGURE 1 – *Missing measurements for cycle 321.*

## 2.2. Edited measurements

Editing criteria are defined for the GDR product in Jason-2 User Handbook [2].

The editing criteria are defined as minimum and maximum thresholds for various parameters. Measurements are edited if at least one parameter does not lie within those thresholds. These thresholds are expected to remain constant throughout the Jason-2 mission, so that monitoring the number of edited measurements allows a survey of data quality.

In the following, only measurements over ocean are kept. This is done by applying an ocean-land mask, instead of using the surface type information available in the products (surface\_type, rad\_surf\_type). There is no impact on global performance estimations since the more significant results are derived from analyses in open ocean areas.

The rain flag is not used for data selection.

The number and percentage of points removed by each criterion is given on the following table. Note that these statistics are obtained with measurements already edited for ice flag ( 3.86 % of points removed).

Parameters	Min threshold	Max threshold	Unit	Nb removed	% removed	% mean removed
Sea surface height	-130	100	<i>m</i>	283	0.77	0.76
Sea level anomaly	-2	2	<i>m</i>	316	0.85	1.04
Nb measurements of range	10	DV	–	392	1.06	1.03
Std. deviation of range	0	0.2	<i>m</i>	550	1.49	1.39
Square off nadir angle	-0.2	0.64	<i>deg</i> <sup>2</sup>	207	0.56	0.59
Dry tropospheric correction	-2.5	-1.9	<i>m</i>	0	0.00	0.00
Combined atmospheric correction	-2	2	<i>m</i>	0	0.00	0.00
AMR wet tropospheric correction	-0.5	-0.001	<i>m</i>	39	0.11	0.23
Ionospheric correction	-0.4	0.04	<i>m</i>	427	1.16	1.18
Significant wave height	0	11	<i>m</i>	220	0.60	0.65
Sea State Bias	-0.5	0	<i>m</i>	210	0.57	0.62
Backscatter coefficient	7	30	<i>dB</i>	288	0.78	0.60
Nb measurements of sigma0	10	DV	–	388	1.05	1.02
Std. deviation of sigma0	0	1	<i>dB</i>	657	1.78	1.93
Ocean tide	-5	5	<i>m</i>	0	0.00	0.01
Equilibrium tide	-0.5	0.5	<i>m</i>	0	0.00	0.00
Earth tide	-1	1	<i>m</i>	0	0.00	0.00
Pole tide	-15	15	<i>m</i>	0	0.00	0.00
Altimeter wind speed	0	30	<i>m.s</i> <sup>-1</sup>	383	1.04	1.02
Global statistics of edited measurements by thresholds	–	–	–	1232	3.33	3.25

TABLE 1: Table of parameters used for editing.

The measurements rejected during the editing process are shown in figure 2. As there are only 18 passes in this cycle, number of rejected measurements is low.

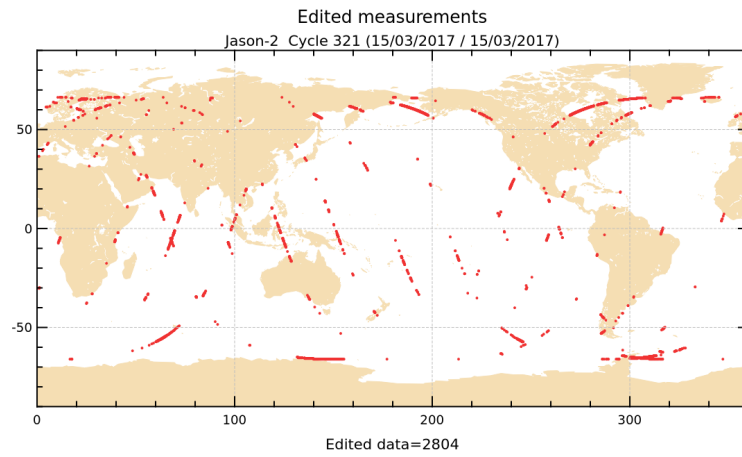


FIGURE 2 – Edited measurements for cycle 321.

Map in figure 3 shows the percentage of valid measurements by sample.

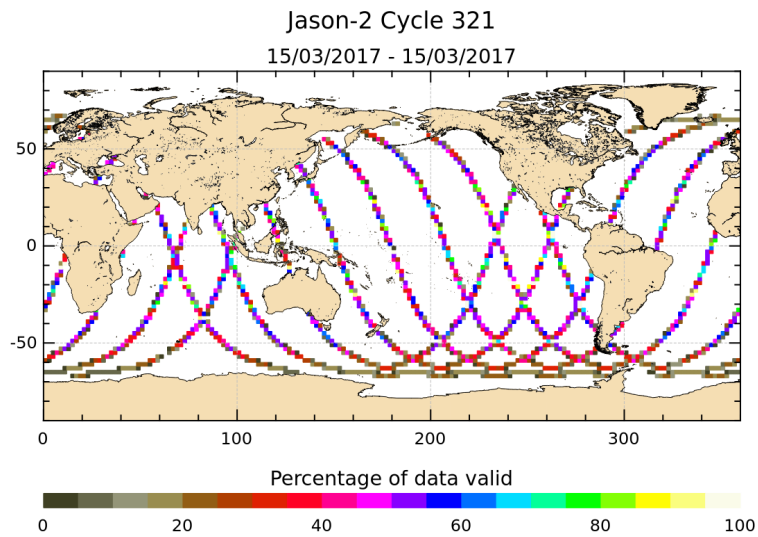


FIGURE 3 – Percentage of valid measurements for cycle 321.

### 3. Instrumental and geophysical parameter analysis

Monitoring of instrumental and geophysical parameters is important in order to detect possible problems. When monitoring parameters over long periods, possible drifts or jumps can be detected. These verification products are produced operationally so that they allow systematic monitoring of the main relevant parameters. When possible, comparison with Jason-1 data are done.

#### 3.1. Jason-2 altimeter and sensor

##### 3.1.1. Sensor status

A detailed assessment of the Jason-2 sensor (Poseidon-3) is made in a separate bulletin to be made available on request ([9]).

##### 3.1.2. Jason-2 altimeter status

This section presents the general status of the altimeter for main instrumental variations through the Jason-2 mission. Two calibration modes are used to monitor the altimeter internal drifts and compute the altimetric parameters. They are programmed about three times per day, over land.

The CAL1 mode measures the Point Target Response (PTR) of the altimeter in Ku and C bands. Among the parameters extracted from the PTR are :

- the internal path delay
- the total power of the PTR

The evolutions of these parameters as a function of time are plotted to monitor the ageing of the altimeter. The CAL2 mode measures the low pass filter of the altimeter in Ku and C bands.

Notice that in the Jason-2 products, the range is corrected for the internal path delay and the backscatter coefficient takes into account the total power of the measured PTR. After safe hold mode at the end of march 2013, a jump of 0.1dB is visible on the total power of PTR in C-Band. This has no consequence on the backscatter coefficient thanks to calibrations.

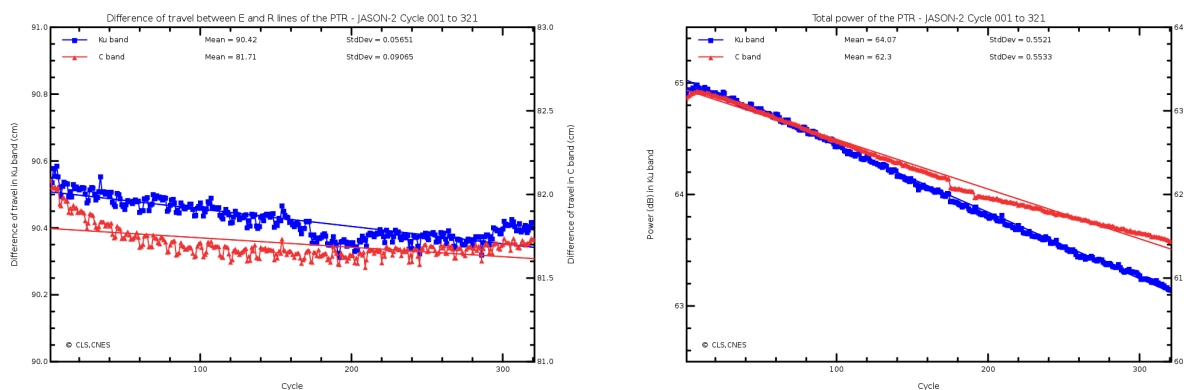


FIGURE 4 – Internal path delay (left) and total power of the PTR (right) for Ku- and C-band.

### 3.2. Significant wave height

Figure 5 shows wave estimations derived from altimeter measurements. Therefore significant wave height data from the current cycle are averaged over a grid of  $2^\circ$  by  $2^\circ$  resolution and smoothed afterwards. Wave height may reach several meters.

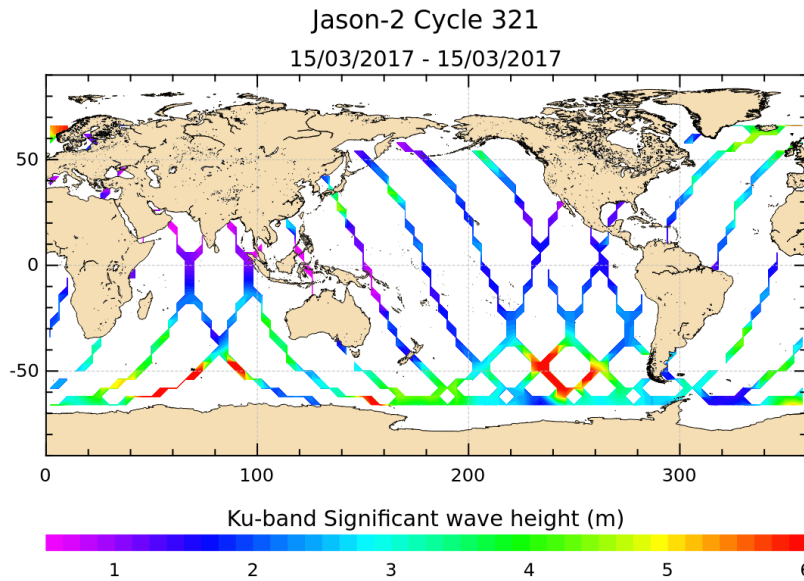


FIGURE 5 – Significant wave height for cycle 321.

The daily average of Ku-band SWH for Jason-1 and Jason-2 is plotted as a function of time on figure 6. They show similar features. Differences between SWH of both satellites - determined during Jason-2 verification phase - is 1.3 cm.

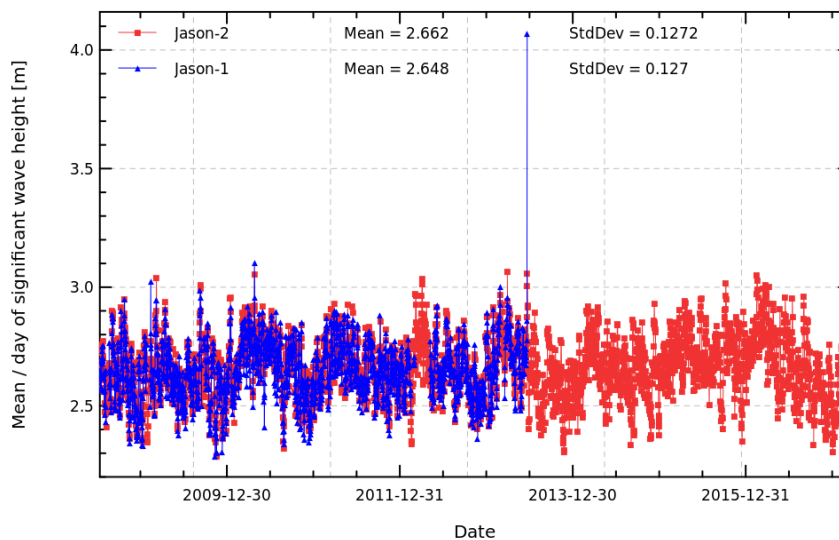


FIGURE 6 – Daily monitoring of Ku-band significant wave height for Jason-2 and Jason-1.



### 3.3. Backscattering coefficient

The daily average of Ku-band backscattering coefficient for Jason-1 and Jason-2 is plotted as a function of time on figure 7. Beside a difference of about 0.30 dB (determined during the verification phase of Jason-2), they show similar features.

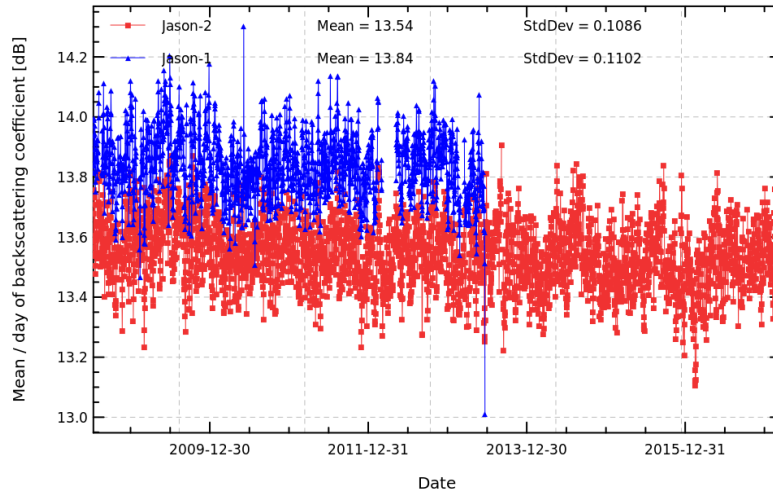


FIGURE 7 – Daily monitoring of Ku-band backscattering coefficient for Jason-2 and Jason-1.

### 3.4. Dual frequency ionosphere correction

The daily average of dual-frequency ionosphere correction for Jason-1 and Jason-2 is plotted as a function of time on figure 8. They show similar features, but a bias of about -8.6 mm is visible (value computed for Jason-2 minus Jason-1 over the tandem phase). This bias comes from Ku and C-band range differences between Jason-1 and Jason-2.

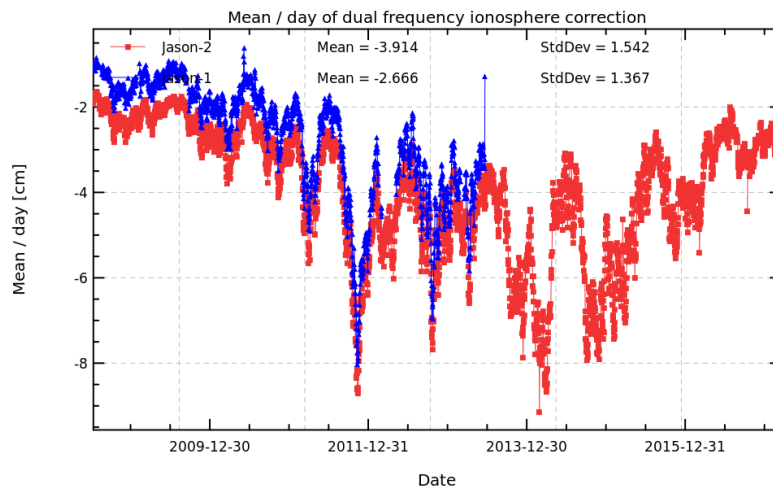


FIGURE 8 – Daily monitoring of dual-frequency ionosphere correction for Jason-2 and Jason-1.

### 3.5. Altimeter wind speed

Figure 9 shows altimeter wind estimations derived from altimeter measurements. Therefore the data from the current cycle are averaged over a grid of  $2^\circ$  by  $2^\circ$  resolution and smoothed afterwards.

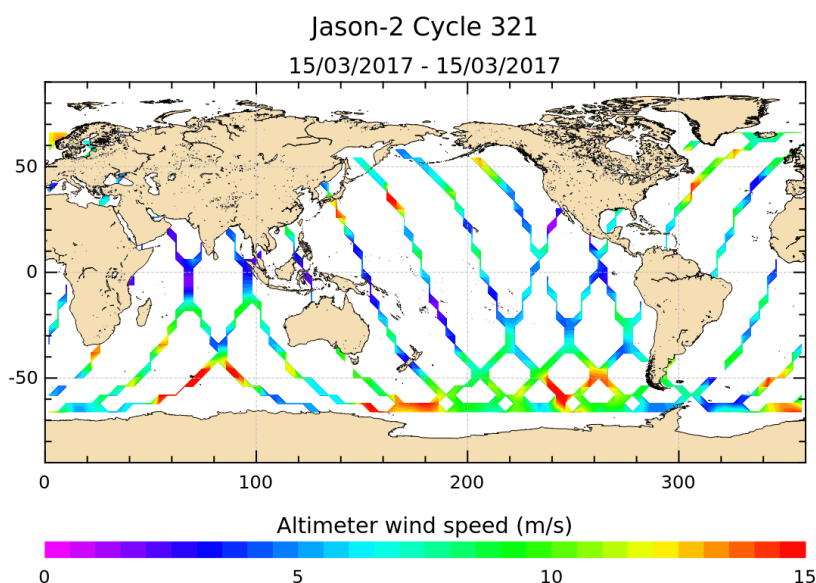


FIGURE 9 – Altimeter wind speed for cycle 321.

The daily average of altimeter wind speed for Jason-1 and Jason-2 is plotted as a function of time on figure 10. They show similar features, and the bias between the two missions is less than 0.1 m/s.

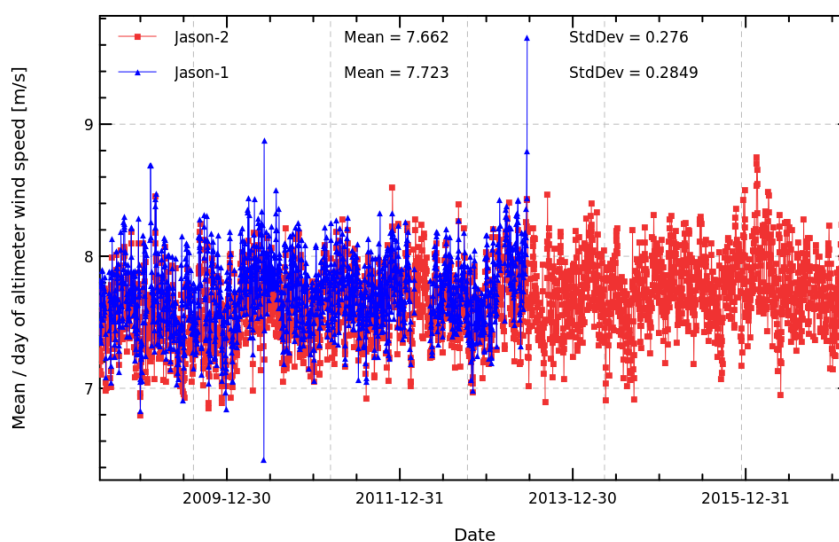


FIGURE 10 – Daily monitoring of altimeter wind speed for Jason-2 and Jason-1.

### 3.6. Radiometer parameters

The left part of figure 11 shows the mean and standard deviation of wet troposphere correction (radiometer - ECMWF) difference by pass for current cycle. Beside natural pass to pass variations, there is no anomaly detectable.

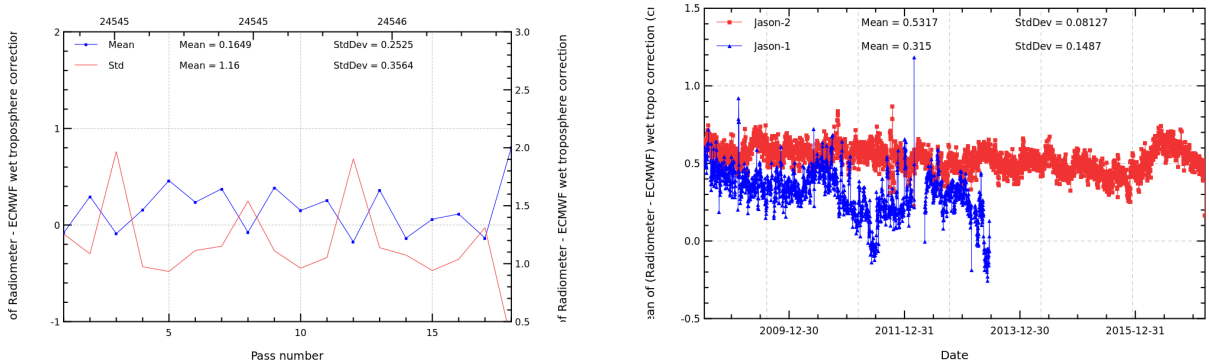


FIGURE 11 – *Pass monitoring of wet troposphere differences between radiometer and ECMWF model for Jason-2 cycle 321 (left) and daily monitoring of wet troposphere differences between radiometer and ECMWF model (right).*

For Jason-2, an Autonomous Radiometer Calibration System (ARCS) is used prior to GDR production for the Jason-2 radiometer (AMR) in order to monitor calibrations and recalibrate if necessary (for more details see [5]). The plot of daily means of (Radiometer - ECMWF) wet troposphere correction was quite stable, even though ARCS does not use the ECMWF model to calibrate the AMR. Nevertheless small variations of up to 2 mm amplitude are observable. They can be due to (among others) evolution of ECMWF model or ARCS calibrations. Though for GDR, these drifts and jumps are approximatively corrected by ARCS (by discrete values), drifts are still visible within a cycle. Furthermore, the application of a discrete recalibration can also lead to jumps in the time series. Note that since 12 July 2016 (cycle 295), Jason-2 AMR have been recalibrated about every 2 months with cold sky calibration (as for Jason-3).

## 4. Crossover Analysis

### 4.1. Overview

SSH crossover differences are the SSH differences between ascending and descending passes where they cross each other. Crossover differences are systematically analyzed to estimate data quality and the Sea Surface Height (SSH) performances. SSH crossover differences are computed from the valid data set on a one cycle basis, with a maximum time lag of 10 days, in order to limit the effects of ocean variability which are a source of error in the performance estimation. The mean SSH crossover differences should ideally be close to zero and standard deviation should ideally be small.

Nevertheless SLA varies also within 10 days, especially in high variability areas. Furthermore, due to lower data availability (due to seasonal sea ice coverage), models of several geophysical corrections are less precise in high latitude. Therefore an additional geographical selection - removing shallow waters, areas of high ocean variability and high latitudes ( $> |50|$  deg) - is applied for cyclic monitoring.

### 4.2. Maps of SSH crossover differences

The map of the mean differences at crossovers (4 by 4 degrees by bins) is plotted for the current cycle on left panel of figure 12, whereas the right panel shows the whole Jason-2 period. Note that crossover analysis are not reliable for this cycle as the number of crossover points is highly reduced.

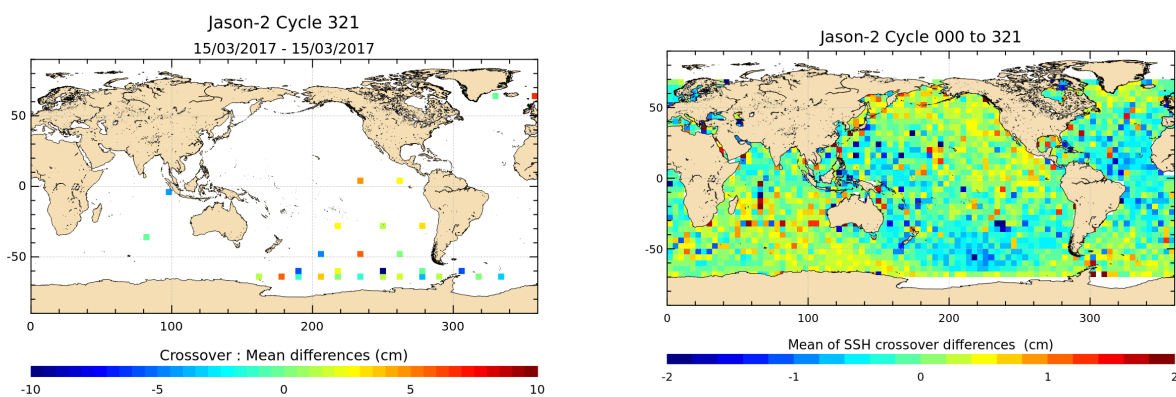


FIGURE 12 – Mean SSH at crossovers for cycle 321 (left) and over the whole Jason-2 period (right).

### 4.3. Cycle by cycle monitoring

The mean and standard deviation of SSH differences at crossovers are plotted for Jason-2 and Jason-1 as a function of time on a one cycle per cycle basis in figure 13. Note that cycle 001 of Jason-2 corresponds to cycle 240 of Jason-1. The statistics are computed after data editing and using the geographical selection criteria.

Note that in figure 13, Jason-2 is computed with GDR-D data, Jason-1 SSH is computed with GDR-E version of data (the ocean tide is GOT4.10 and orbit solution is POE-E). In figure 14, differences are computed from GDR-E and GDR-E like version of data for Jason-1 and Jason-2 respectively.

During the tandem phase of Jason-2 (cycles 001 to 020), an intersection procedure is used to get homogeneous datasets on both missions. After Jason-1 was moved to its interleaved orbit, statistics are computed for each cycle based on Jason-2 cycle numbering. Data number may therefore vary between the missions (due to missing or edited measurements). Jason-2 and Jason-1 show similar performances.

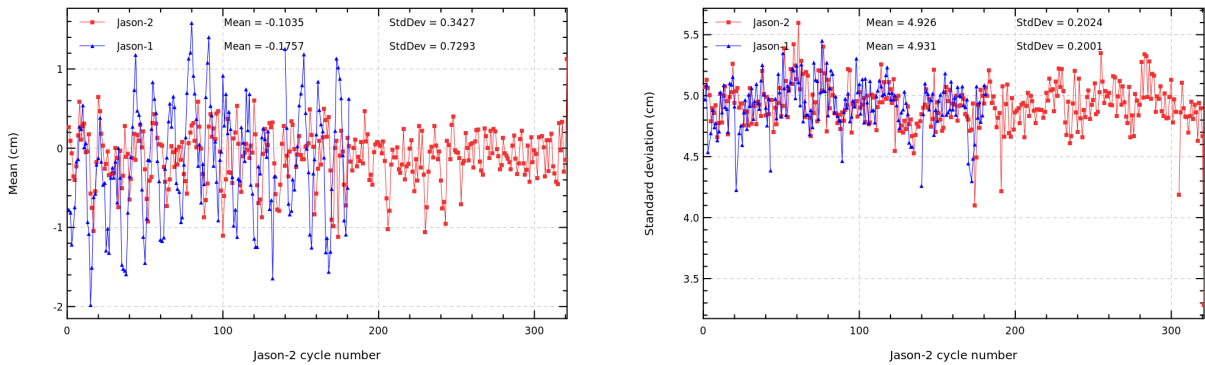


FIGURE 13 – Cyclic monitoring of mean (left) and standard deviation (right) of SSH differences at crossovers for Jason-1 and Jason-2.

Figure 14 shows the mean and the standard deviation of Jason-1 – Jason-2 10-day SSH crossovers, using radiometer wet troposphere correction for both satellites or ECMWF model wet troposphere correction.

At the end of Jason-1 mission, the mean of Jason-1 minus Jason-2 SSH difference shows a drift, partly due to JMR as it is less visible using ECMWF model wet troposphere correction.

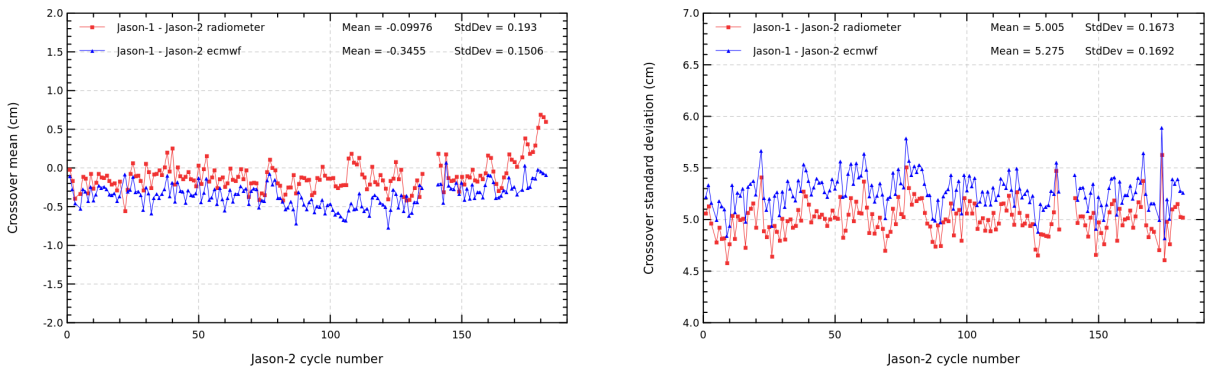


FIGURE 14 – Cyclic monitoring of mean (left) and standard deviation (right) of (Jason-1 – Jason-2) SSH differences at crossovers.

#### 4.4. Comparison of pseudo time tag bias

The pseudo time tag bias is found by computing at SSH crossovers a regression between SSH and orbital altitude rate ( $\dot{H}$ ), also called satellite radial speed :

$$SSH = \alpha \dot{H}$$

This method allows us to estimate the time tag bias but it absorbs also other errors correlated with  $\dot{H}$  as for instance orbit errors. Therefore it is called "pseudo" time tag bias.

The monitoring of this coefficient estimated at each cycle is performed for Jason-1 and Jason-2 in the following figure : it highlights that pseudo time tag bias is close to zero (mean value) for both missions. Mainly thanks to the use of GOT4.10 ocean tide solution in Jason-1 GDR-E data, the 59-days signal visible on Jason-2 pseudo time tag bias is not on Jason-1 monitoring.

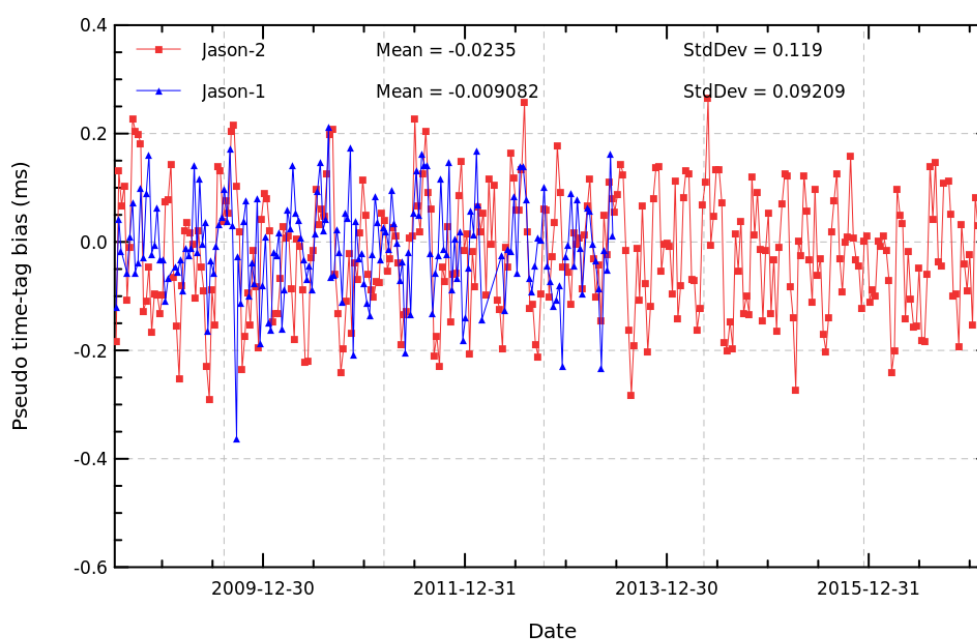


FIGURE 15 – Cyclic monitoring of pseudo time tag bias for Jason-1 and Jason-2.

## 5. Along track analysis

### 5.1. Mean of along-track SLA

#### 5.1.1. Temporal analysis

The monitoring of mean SLA for Jason-1 and Jason-2 (Figure 16 on left) and the monitoring of mean SLA differences between both missions (Figure 16 on right) show a bias under 2mm over the repetitive orbit of Jason-1. For the right side of figure 16, Jason-1 and Jason-2 GDR-E like data are used. Since Jason-1 moved to a geodetic orbit, the monitoring of mean SLA differences between both missions shows a jump (close to 1.5mm). A part of this jump disappears with the use of an updated MSS (with improved estimation over the Jason-1 geodetic phase).

Note that during the Jason-2/Jason-1 tandem phase (Cycles 1 to 20), the SSH bias estimation is performed very accurately (0.1 cm). This allows us to link together Jason-1 and Jason-2 MSL time data series (see section [Mean Sea Level estimations](#)).

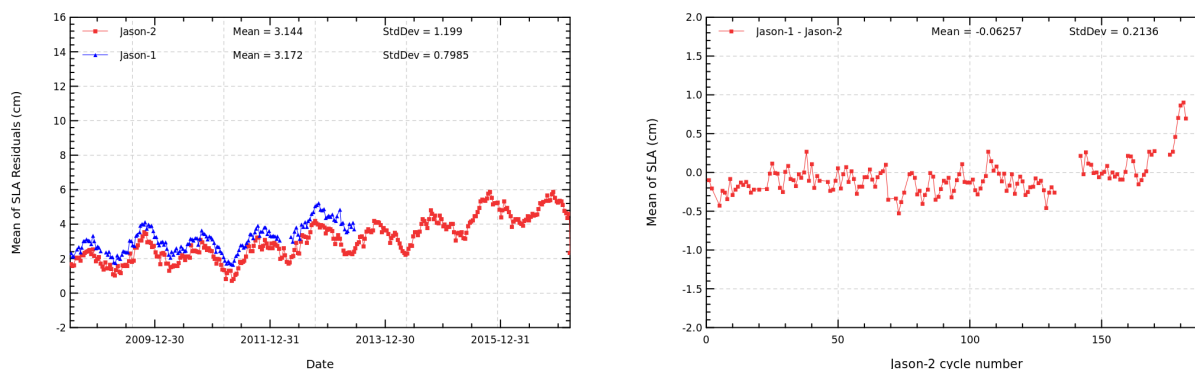


FIGURE 16 – Cyclic monitoring of mean SLA for Jason-1 and Jason-2 (left) and differences of (Jason-1 – Jason-2) mean SLA (right).

#### 5.1.2. Maps

Figure 17 show the map of Jason-2 SLA relative to the MSS.

Since Jason-1 has moved to its new interleaved orbit, maps of direct Jason-1 – Jason-2 SLA measurements are no longer available. But differences of gridded SLA for Jason-1 and Jason-2 can be made. This difference is quite noisy for one cycle, especially as both satellites are shifted in time and sea state changes especially in regions of high ocean variability. Therefore left panel of figure 18 shows an average over SLA grid differences from several cycles (over cycle 022 to cycle 183). High variability regions as Gulf Stream and Antarctic circumpolar current are visible. On right panel of figure 18, colocated Jason-1 – Jason-2 SLA differences averaged over the period of tandem phase (cycle 001 to 020) are shown. As both satellites measure the same oceanic features only 55 s apart, only a weak hemispheric bias is visible (likely due to differences in orbit processing).



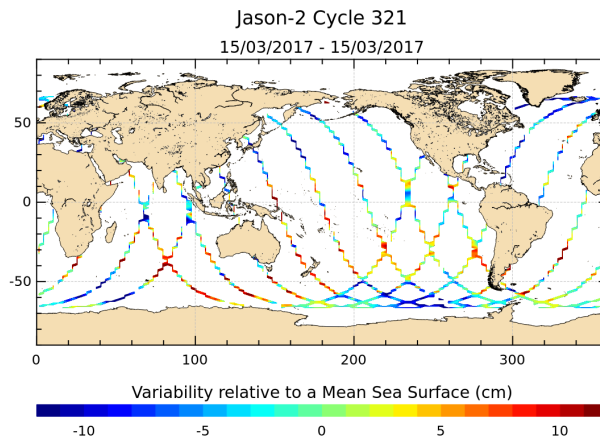


FIGURE 17 – Sea level anomaly relative to MSS for cycle 321.

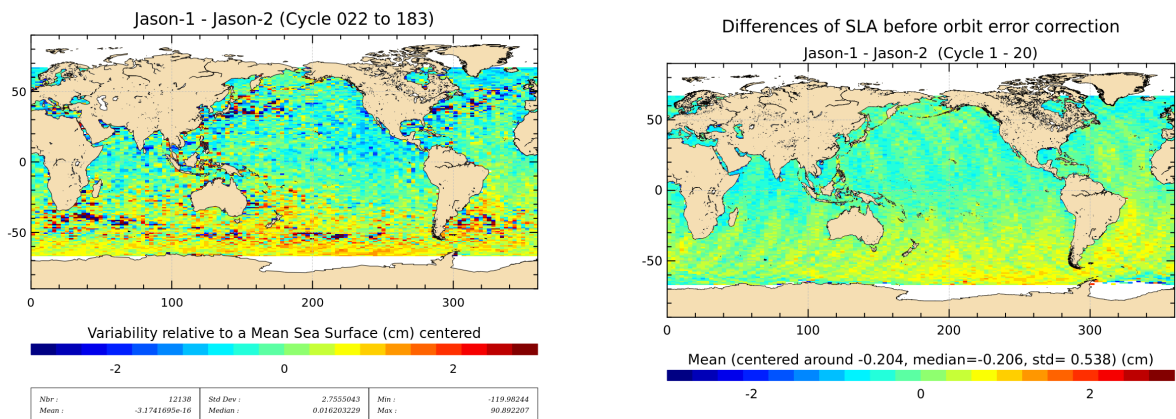


FIGURE 18 – Jason-1 – Jason-2 SLA differences averaged over Jason-2 period from cycle 022 until cycle 183 (left), and for tandem phase (cycle 001 to 020) (right).



## 5.2. Along-track performances

Sea Level Anomaly (SLA) statistics are computed from repeat-track analysis. The plot below gives the standard deviation of the SLA for each cycle over the whole data set (shallow waters are excluded).

There are no values for Jason-1 during Jason-2 cycle 21 and half of cycle 22 (corresponding to Jason-1 cycles 260 and 261) because the Jason-1 satellite is moved to the flight formation orbit on the new ground track spacing to the West of Jason-2. This was already the ground track of TOPEX during its formation flight with Jason-1. In addition, Jason-1 is temporally shifted by 5 days.

As Jason-1 data are available in GDR-E version (with MSS 2011 referenced over 20years), errors are significantly reduced for Jason-1 SLA residuals.

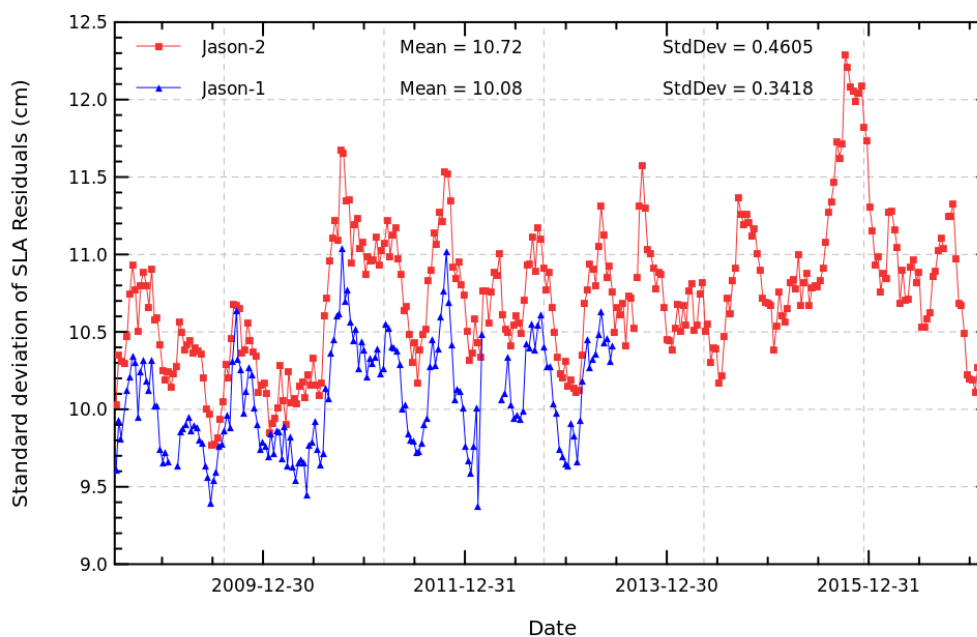


FIGURE 19 – Cyclic monitoring standard deviation of along track SLA for Jason-1 and Jason-2.

## 6. Mean Sea Level estimations (MSL)

### 6.1. Global MSL trend

During the tandem phase of Jason-2 (till cycle 020), both Jason satellites flew on the same ground track, only 55s apart. They therefore measured the same features, allowing to calibrate Jason-2. This allowed to link precisely the MSL time series of Jason-1 and Jason-2. The uncertainty of the bias value between the two time series is less than 1 mm. The evolution of the ocean mean sea level can therefore be precisely observed on a continual basis since 1993 thanks to the reference missions : TOPEX/Poseidon, Jason-1, Jason-2 and now Jason-3.

Wet troposphere correction, inverse barometer correction, GIA (-0.3 mm/yr) are applied to calculate the MSL and the data series are linked together accurately thanks to the tandem flying phases. Data from Jason-2 mission were introduced in DUACS system end of January 2009 (when Jason-1 moved to its new interleaved orbit). With Jason-2 move to interleaved orbit (October 2016), Jason-3 has been the new the reference mission for GMSL. The following global bias are applied : -2.260 cm between T/P&Jason-1, 3.900 cm between Jason-1/Jason-2 and 2.880 cm between Jason-2/Jason-3. An exhaustive overview over possible errors impacting the MSL evolution is given in [4].

Furthermore, annual and semi-annual signals are removed from the time serie and a 2-month filter is applied. For more details, see MSL Aviso Website : <http://www.aviso.altimetry.fr/msl>.

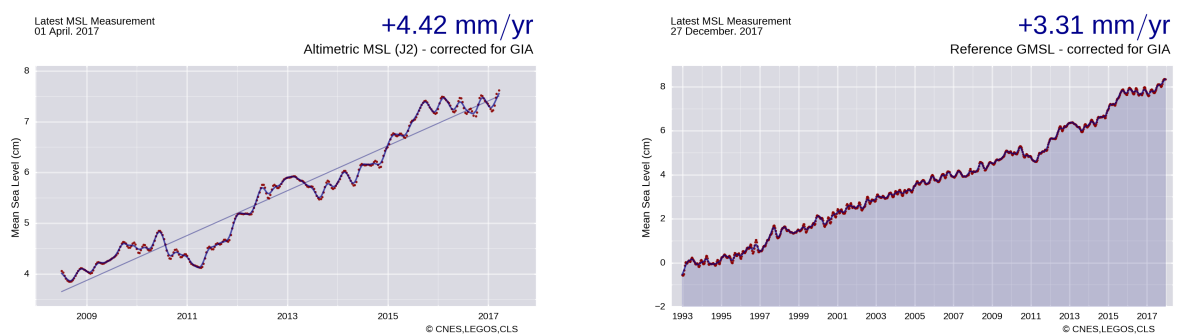


FIGURE 20 – Global MSL on Jason-2 mission (left) and with reference missions from 1993 onwards (right).

## 6.2. Regional MSL trends

Though mean sea level trend is globally positive, it is inhomogeneous distributed over the ocean. Locally, sea level rise or decline up to  $\pm 10$  mm/yr are observed on right panel of figure 21. The map of regional MSL trends is estimated from multi-mission grids (Ssalto/DUACS products) in order to improve spatial resolution.

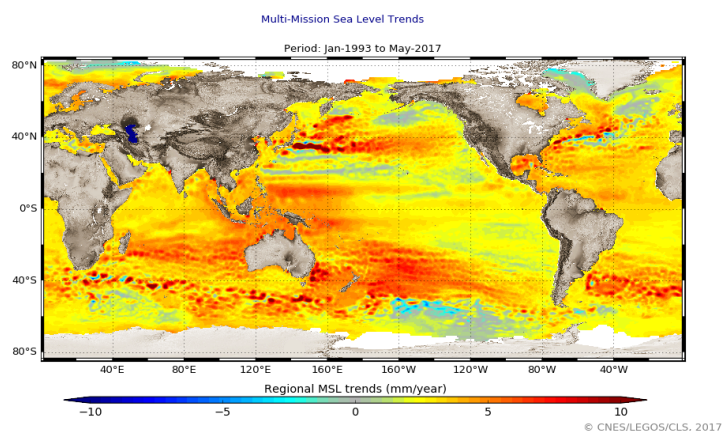


FIGURE 21 – Regional MSL trends from 1993 onwards.

- [1] Jason-2 Version 'T' Geophysical Data Records : Public Release, August 2009. Available at : [www.aviso.altimetry.fr/fileadmin/documents/data/products/Jason-2\\_GDR\\_T\\_disclaimer.pdf](http://www.aviso.altimetry.fr/fileadmin/documents/data/products/Jason-2_GDR_T_disclaimer.pdf)
- [2] OSTM/Jason-2 User Handbook, December 2011 *SALP-MU-M-OP-15815-CN*. Available at : [www.aviso.altimetry.fr/fileadmin/documents/data/tools/hdbk\\_j2.pdf](http://www.aviso.altimetry.fr/fileadmin/documents/data/tools/hdbk_j2.pdf)
- [3] H. Roinard, S.Philipps, 2012. Jason-2 reprocessing impact on ocean data (cycles 001 to 020). Comparison of Jason-2 Gdr-D with Gdr-T, as well as with Jason-1 Gdr-C. *SALP-RP-MA-EA-22118-CLS*. ftp ://avisoftp.cnes.fr/AVISO/pub/jason-2/documentation/gdr\_d\_calval\_report/JA2\_GDR\_D\_validation\_report\_cycles1to20\_V1\_1.pdf
- [4] M. Ablain, Cazenave, A., Valladeau, G., and Guinehut, S. 2009 : A new assessment of the error budget of global mean sea level rate estimated by satellite altimetry over 1993-2008. *Ocean Sci*, **5**, 193-201. Available at <http://www.ocean-sci.net/5/193/2009/os-5-193-2009.pdf>
- [5] S. Brown, S. Desai, W. Lu, and A. Sibthorpe. 2009 : Performance assessment of the Advanced Microwave radiometer after 1 year in Orbit. *OSTST Seattle, USA*,. Available at : [www.aviso.altimetry.fr/fileadmin/documents/OSTST/2009/oral/Brown.pdf](http://www.aviso.altimetry.fr/fileadmin/documents/OSTST/2009/oral/Brown.pdf)
- [6] J.-D. Desjonquieres, G. Carayon, J.-L. Courriere, and N. Steunou, 2008. Poseidon 3 In-flight results. *OSTST Nice, France*. Available at : [www.aviso.altimetry.fr/fileadmin/documents/OSTST/2008/oral/desjonquieres.pdf](http://www.aviso.altimetry.fr/fileadmin/documents/OSTST/2008/oral/desjonquieres.pdf)
- [7] J.-D. Desjonquieres, 2009. Poseidon 3 Instrument Investigations, Corrections and Upgrades. *OSTST Seattle, USA*. Available at : [www.aviso.altimetry.fr/fileadmin/documents/OSTST/2009/oral/Desjonquieres\\_instrument.pdf](http://www.aviso.altimetry.fr/fileadmin/documents/OSTST/2009/oral/Desjonquieres_instrument.pdf)
- [8] J. Dorandeu, M. Ablain, Y. Faugere, F. Mertz & B. Soussi, 2004 : Jason-1 global statistical evaluation and performance assessment. Calibration and cross-calibration results. *Marine GEODESY*,**27**, 345-372. See : <http://www.informaworld.com/smpp/content~db=all~content=a718993059>
- [9] P. Thibaut et al. : Poseidon-3 Quality Assessment Report Cycle 321. *SALP-RP-JALT-EX-21599-CLS-321*.
- [10] Boy, François and Jean-Damien Desjonquieres. 2010. Note technique datation de l'instant de reflexion des échos altimètres pour POSEIDON2 et POSEIDON3 *Reference : TP3-JPOS3-NT-1616-CNES*