



# TOPEX/Poseidon MGRD Quality Assessment Report

**Cycle 411**

**10-11-2003 20-11-2003**

Prepared by :	C. Schgounn, CLS G. Pontonnier, CLS M. Ablain, CLS	
Accepted by :	J. Dorandeu, CLS	
Quality visa :	M. Destouesse, CLS	
Approved by :	N. Picot, CNES	



**SALP-RP-P2-EX-21120-CLS411**

Edition 01.0, February 2004

# 1 Introduction. Document overview

The purpose of this document is to report the major features of the data quality from the Topex/Poseidon mission. The document is associated with data dissemination on a cycle by cycle basis.

The objectives of this document are :

- To provide a data quality assessment
- To provide users with necessary information for data processing
- To report any change likely to impact data quality at any level, from instrument status to software configuration
- To present the major useful results for the current cycle

It is divided into the following topics:

[Cycle overview](#)

[CALVAL main results](#)

## 2 Cycle overview

### 2.1 Cycle quality and performances

Data quality for this cycle appears to be nominal. For this cycle, the crossover standard deviation is 6.38 cm rms, and the standard deviation of Sea Level Anomalies (SLA) relative to a Mean Sea Surface is 9.61 cm.

### 2.2 Warnings and recommendations

TO BE COMPLETED

### 3 CALVAL main results

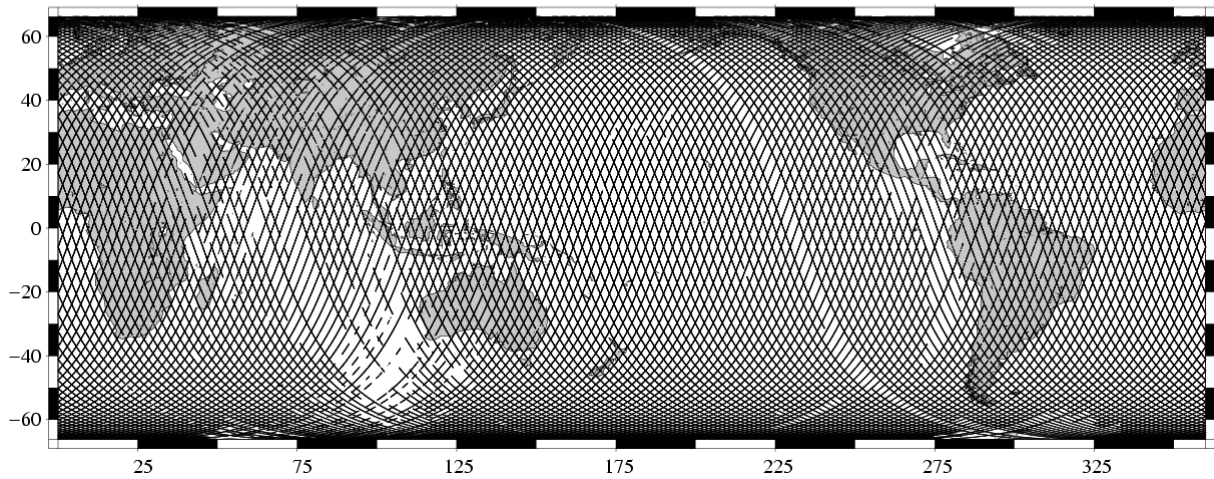
This section presents results that illustrate data quality during this cycle. These verification products are produced operationally so that they allow systematic monitoring of the main relevant parameters.

#### 3.1 Missing measurements

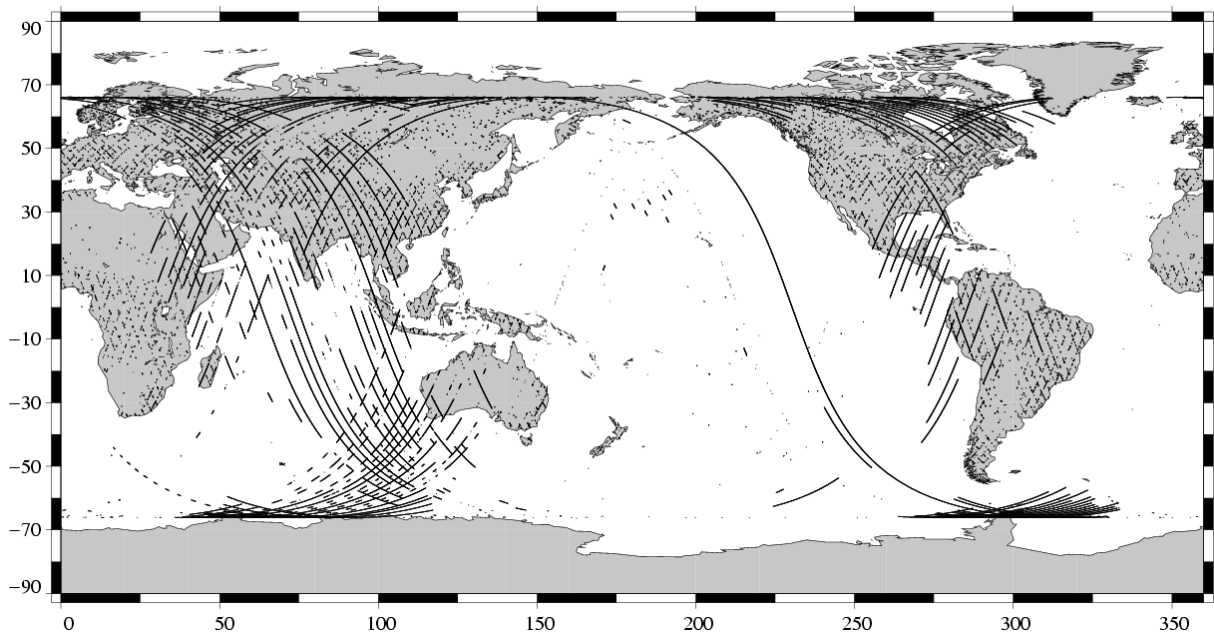
700303 altimeter measurements are present, and 94189 are missing.

The map below shows all the available measurements for this cycle and illustrates the tape recorder problems. The latter figure shows missing 1Hz measurements in the GDRs, with respect to a 1 Hz sampling of a nominal repeat track.

Available measurements  
TOPEX Cycle 411 (10/11/2003 / 20/11/2003)



Missing measurements  
TOPEX/Poseidon Cycle 411 (10/11/2003 / 20/11/2003)

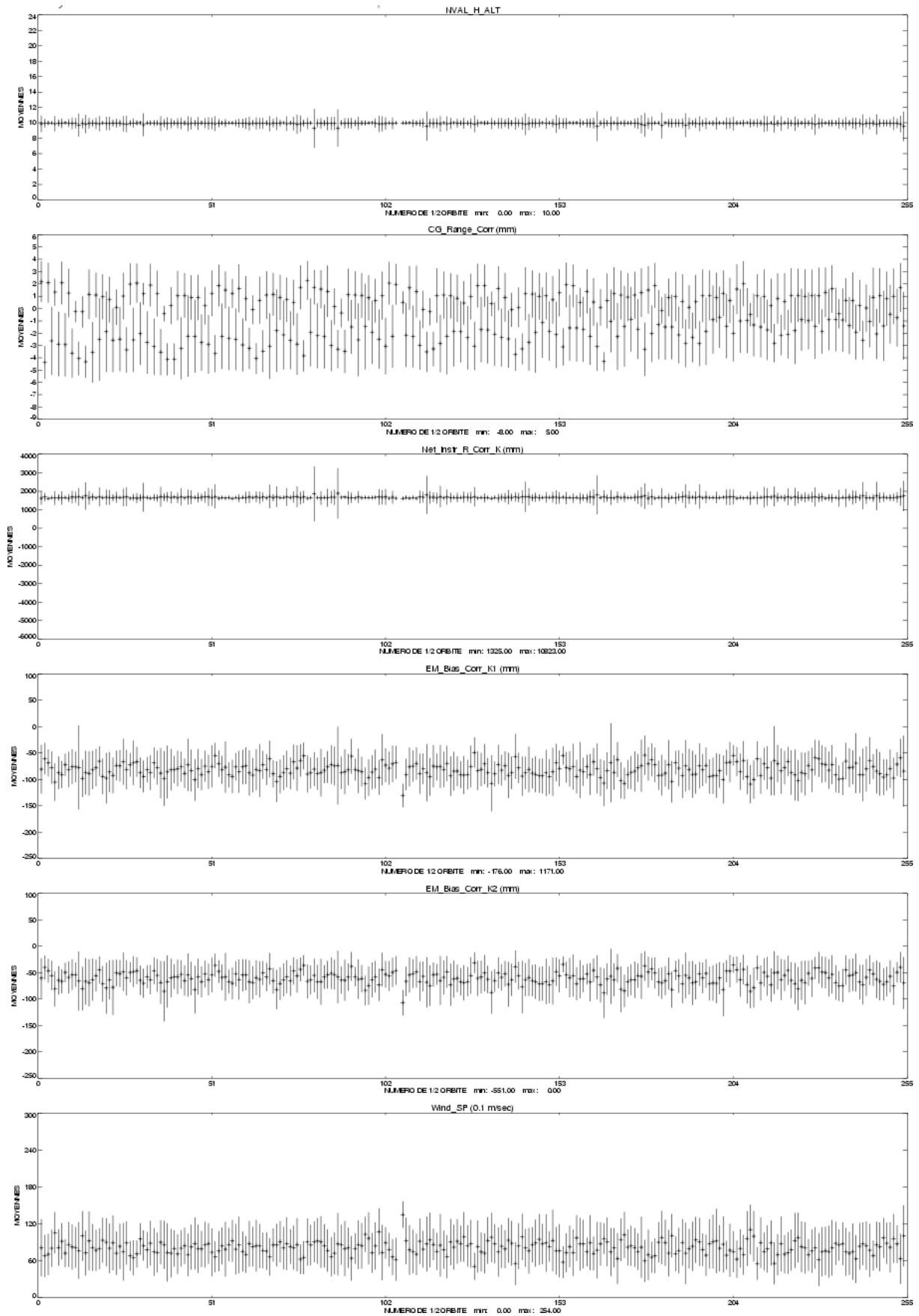


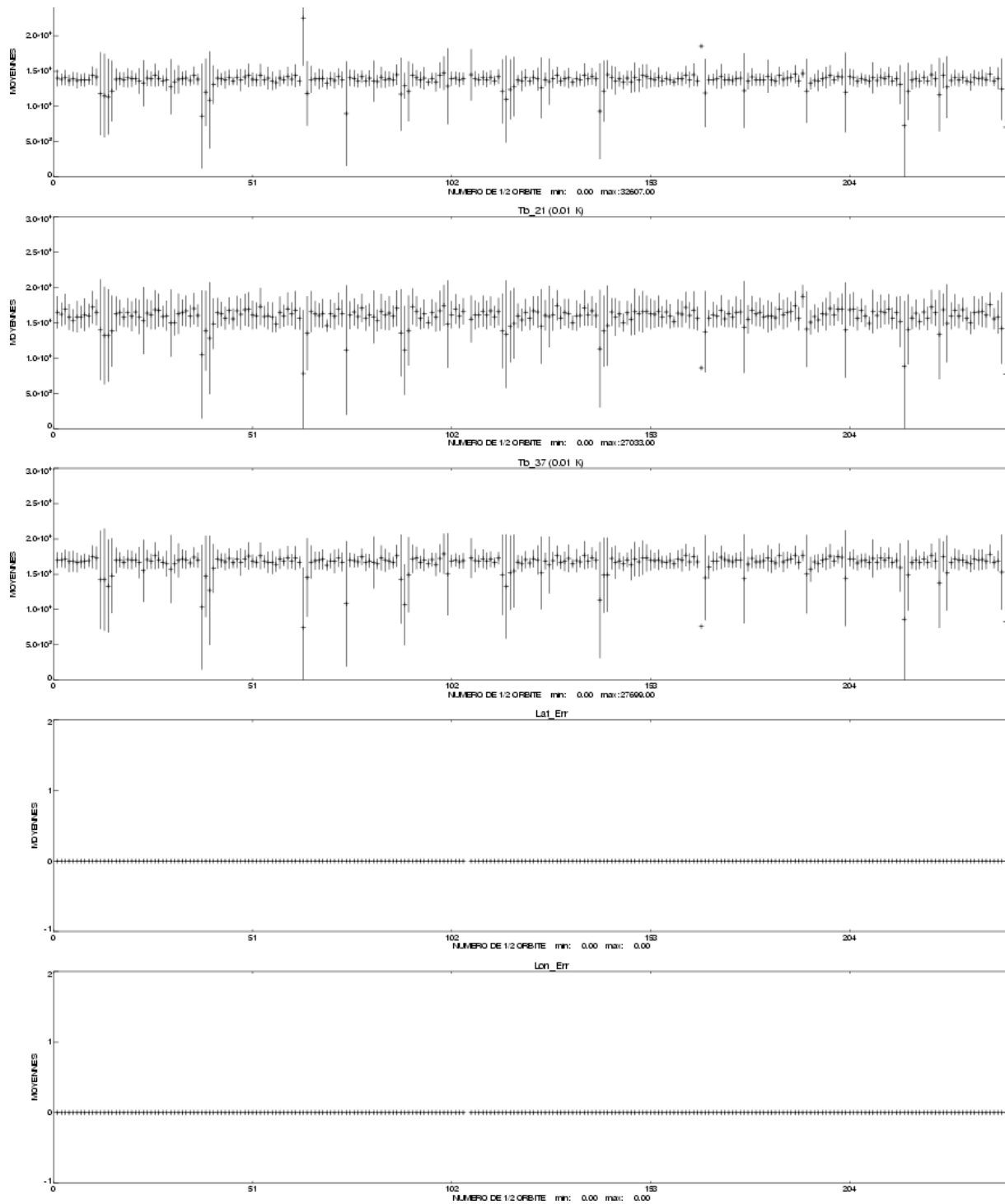
### 3.2 M-GDR quality flags

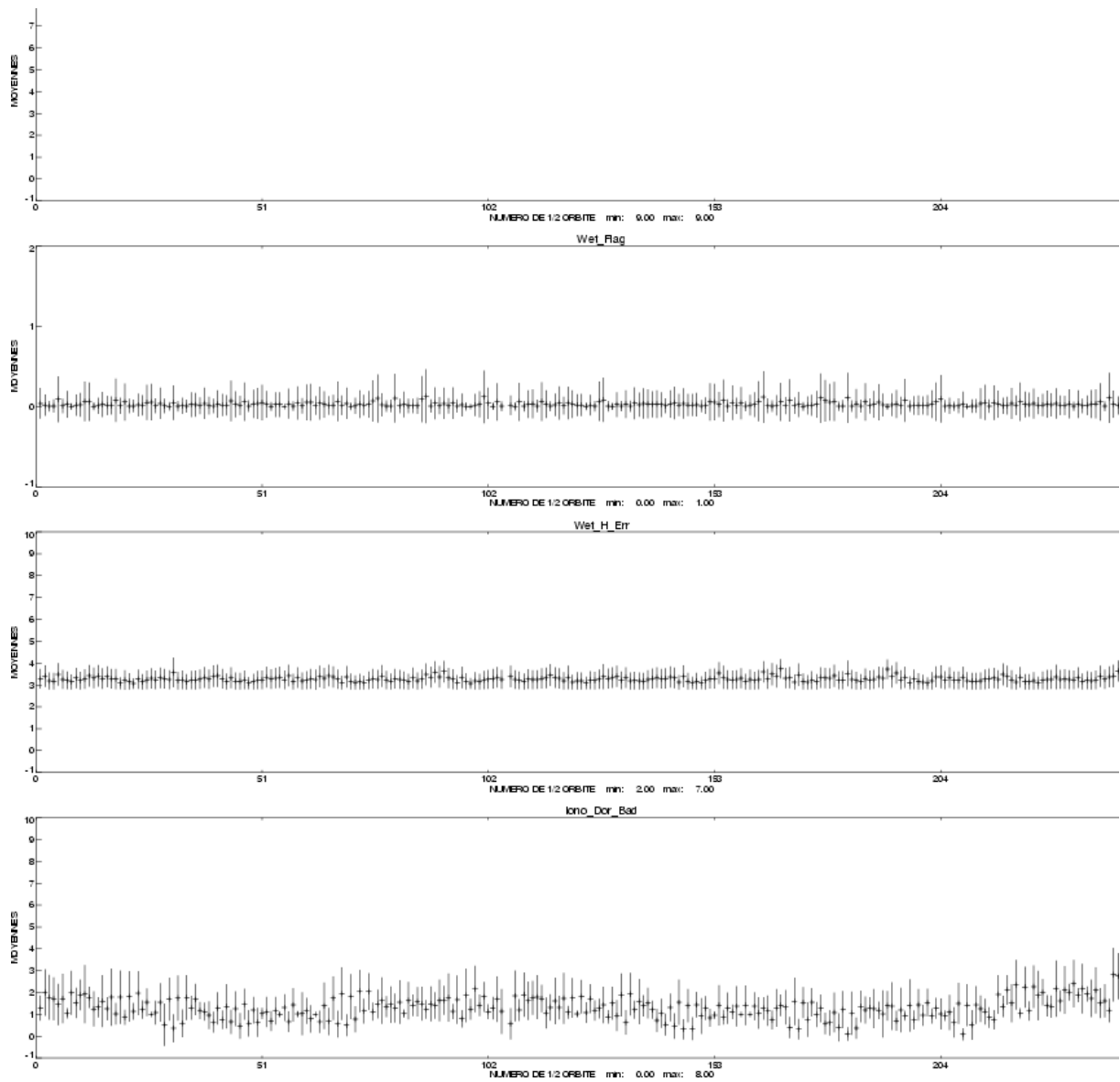
The following table indicates the percentage of measurements for which those flags are set.

Name	Description	% bad
Geo_Bad_1	altimeter land flag	26.42
Geo_Bad_1	ice flag	7.74
Geo_Bad_1	radiometer land flag	28.29
Alt_Bad_1	conditions 1 altimeter	4.08
Alt_Bad_2	conditions 2 altimeter	3.96
Geo_Bad_2	rain (liquid water in excess)	6.03
Geo_Bad_2	less than 4 points for CSR3.0 tide calculation	0.42
Geo_Bad_2	less than 4 points for FES95.2.1 tide calculation	2.88
TOPEX	TOPEX not valid	0.00
TMR	TMR not valid	0.00
TMR_Bad	Brightness temperatures not valid	5.46
DORIS	DORIS not valid	0.00

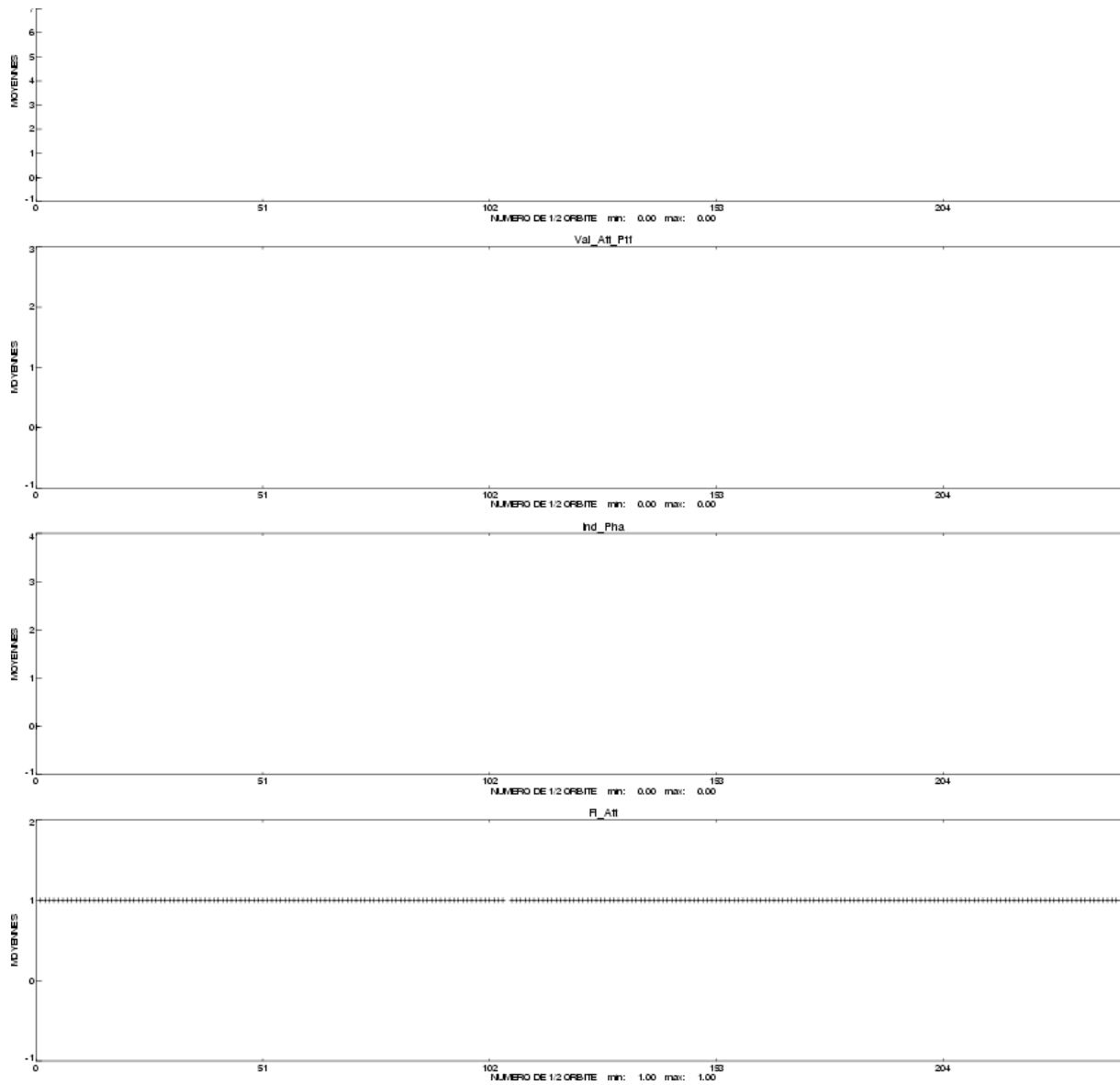
### 3.3 M-GDR parameter plots

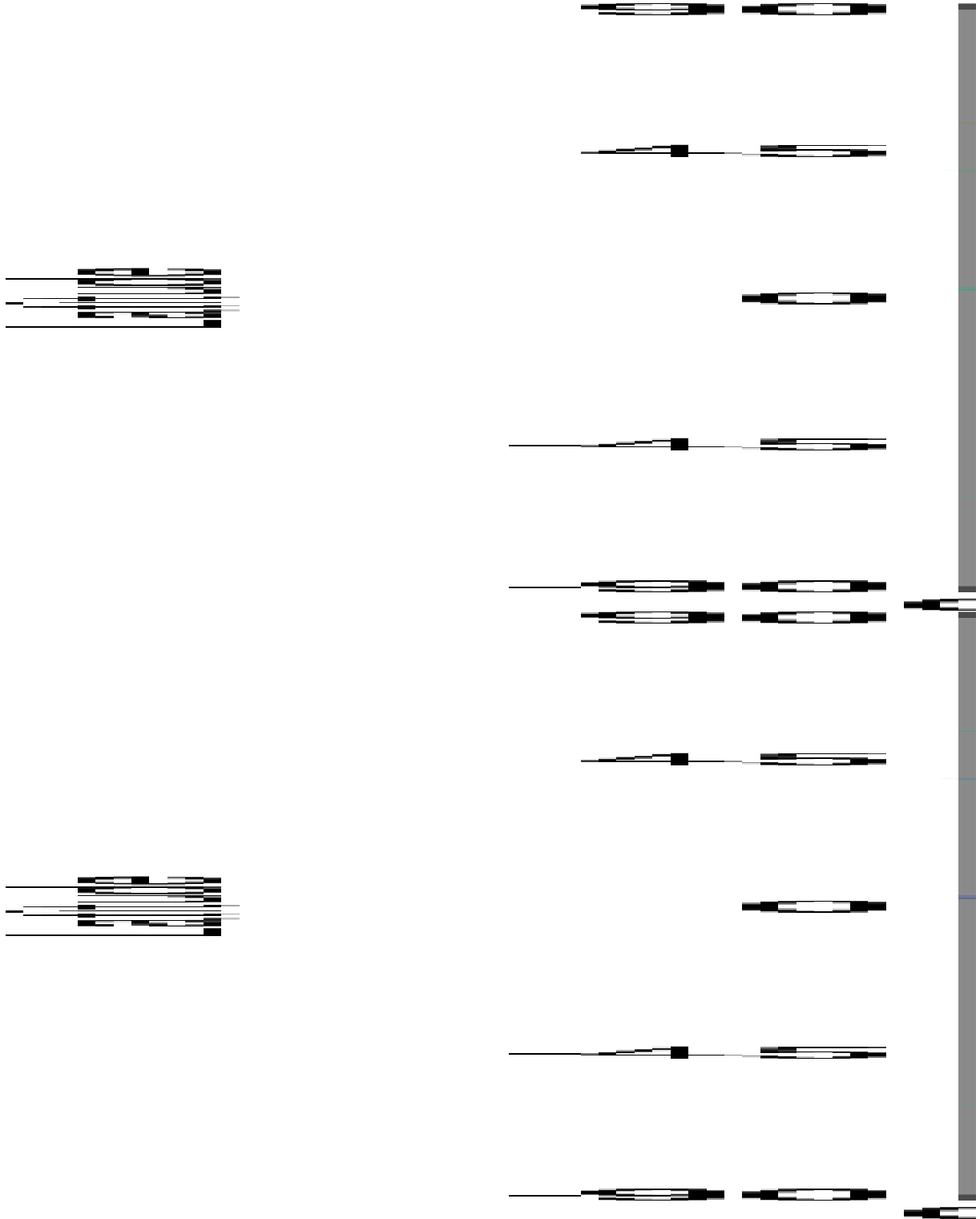


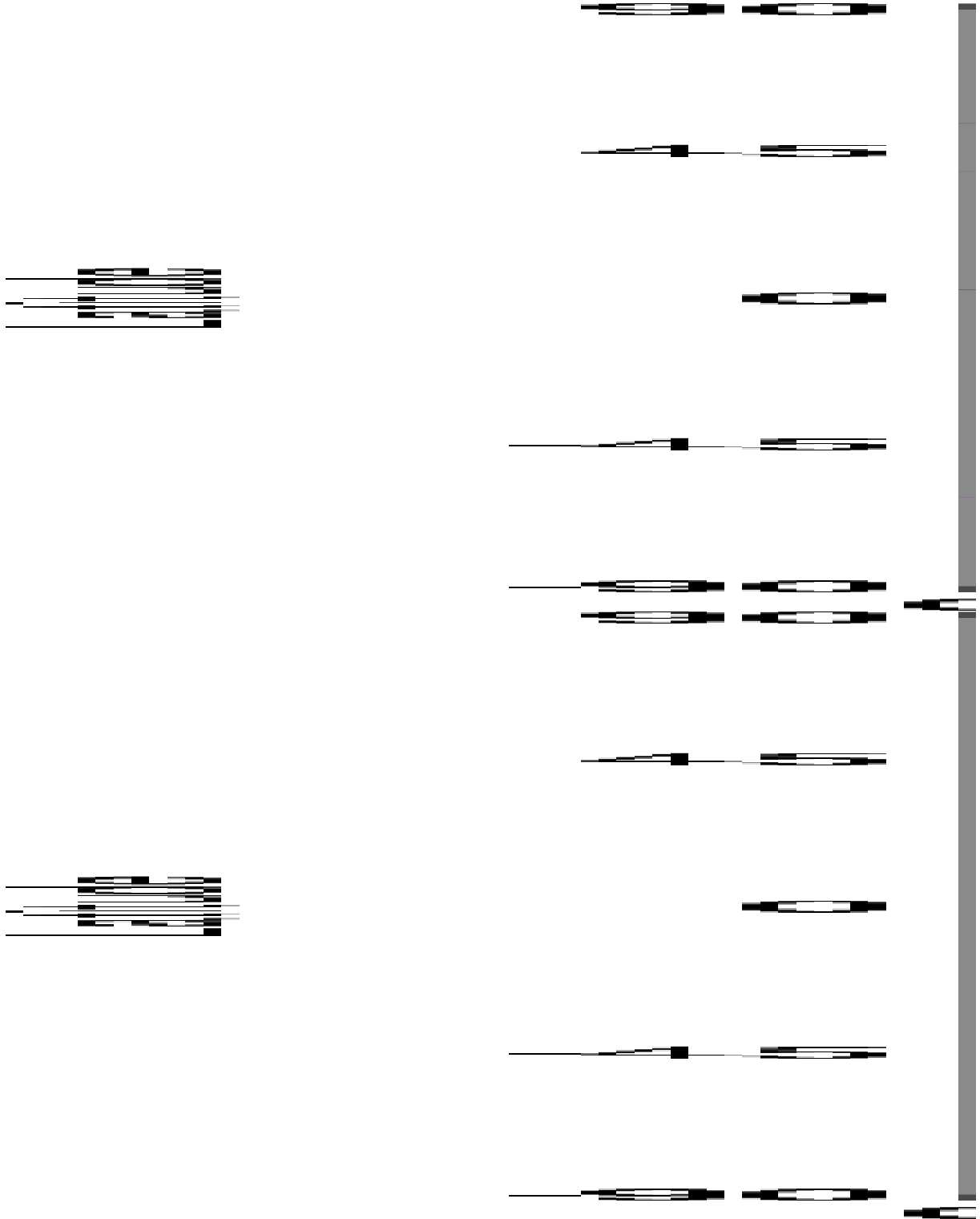


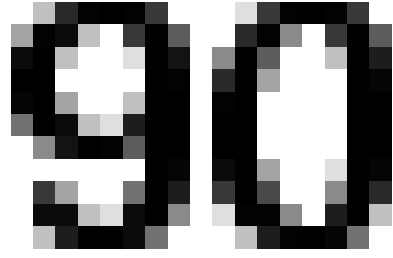












### 3.4 Editing

The following table gives for each tested parameter, minimum and maximum thresholds, the number and the percentage of points removed. As a comparison, the mean percentage over one year (1997) is also given.

There are problems in the interpolation of the TMR parameters since cycle 371 when there are missing measurements (tape recorder failures). These bad measurements are removed by the TMR correction criterion but some of them have been kept. Thus a new criterion has been added to the editing procedure since the cycle 376 to remove all the measurements where the absolute value of the difference between the TMR correction and the ECMWF model wet tropospheric correction is greater than 20 cm.

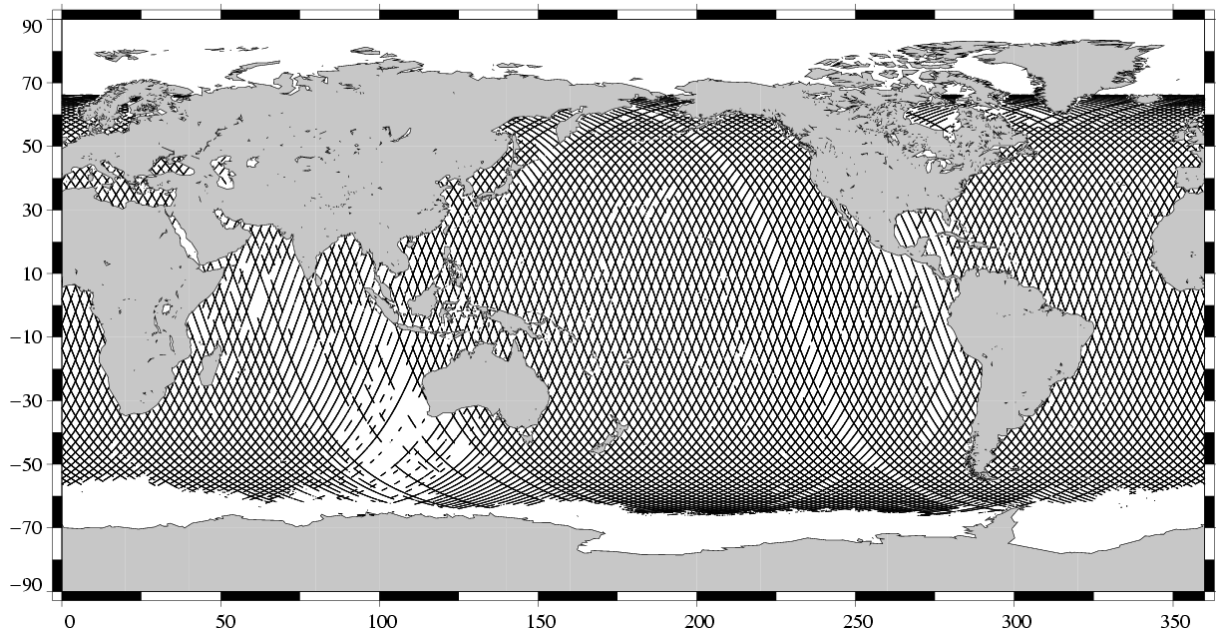
Probably due to the interpolation problem with the TMR, some measurements have radiometer land flag unset over land. This has no impact on the valid data because these measurements have been edited by the altimetric parameter criteria. Nevertheless, this anomaly leads to wrong statistics of the edited measurements. Therefore a new criterion has been added in the editing procedure to remove all the measurements for which the radiometer land flag is set to ocean and the altimeter land flag is set to land.

The number and percentage of points removed by each criterion is given on the following table. Note that these statistics are obtained with measurements already edited for radiometer land flag (28.29 % of points removed) and ice flag ( 7.74 % of points removed).

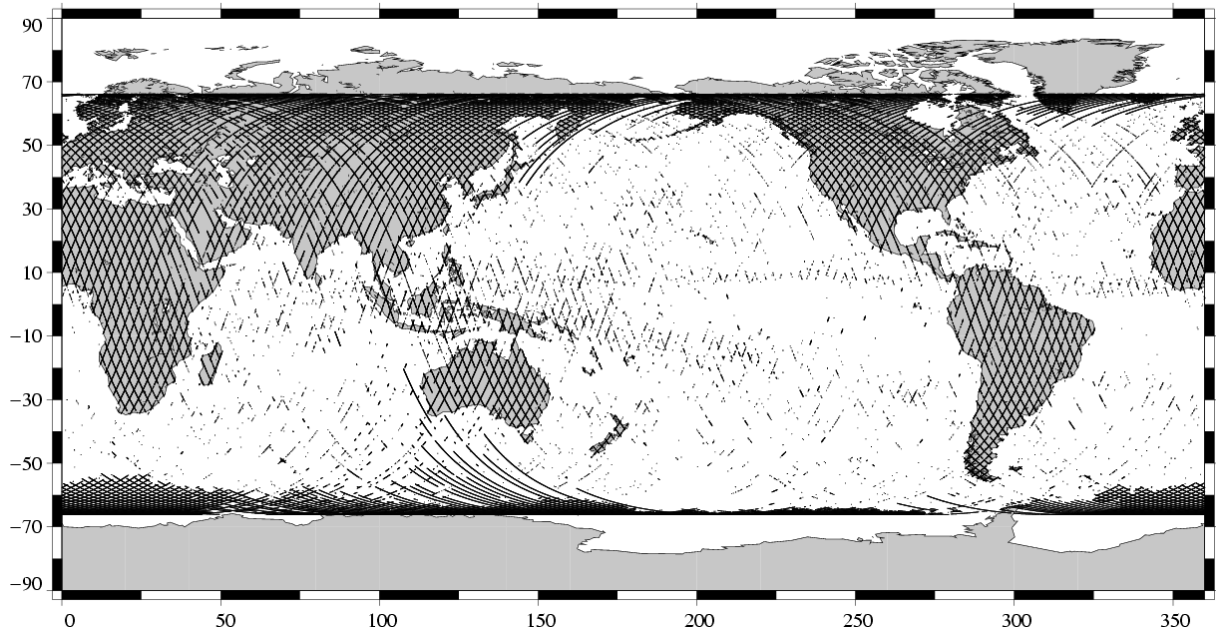
Parameters	Min Thres.	Max Thres.	Unit	Mean % removed in 1997	% removed
Sea surface height	-130.000	100.000	m	1.37	0.16
Number of 20/10Hz valid points Poseidon/TOPEX	5.000	-		1.37	0.22
Std. deviation of range	0.000	0.100	m	1.85	0.83
Off nadir angle from waveform	0.000	0.400	deg	1.36	2.75
Dry tropospheric correction	-2.500	-1.900	m	0.00	0.00
Invert barometer correction	-2.000	2.000	m	0.00	0.00
TMR wet tropospheric correction	-0.500	-0.001	m	0.34	2.92
Ionospheric correction (Poseidon:Doris, TOPEX:Dual)	-0.400	0.040	m	0.00	0.00
Significant wave height	0.000	11.000	m	1.46	0.08
Sea state Bias	-0.500	0.000	m	1.39	0.18
Backscatter coefficient	7.000	30.000	dB	1.44	0.19
Ocean tide height	-5.000	5.000	m	0.01	0.15
Earth tide	-1.000	1.000	m	0.00	0.00
Pole tide	-15.000	15.000	m	0.00	0.00
TMR and ECMWF tropospheric differences	-0.200	0.200	m	NaN	0.33
Spline fitting					0.01

The following three maps are complementary: they show respectively the removed, the selected measurements and the percentage of selected measurements in the editing procedure.

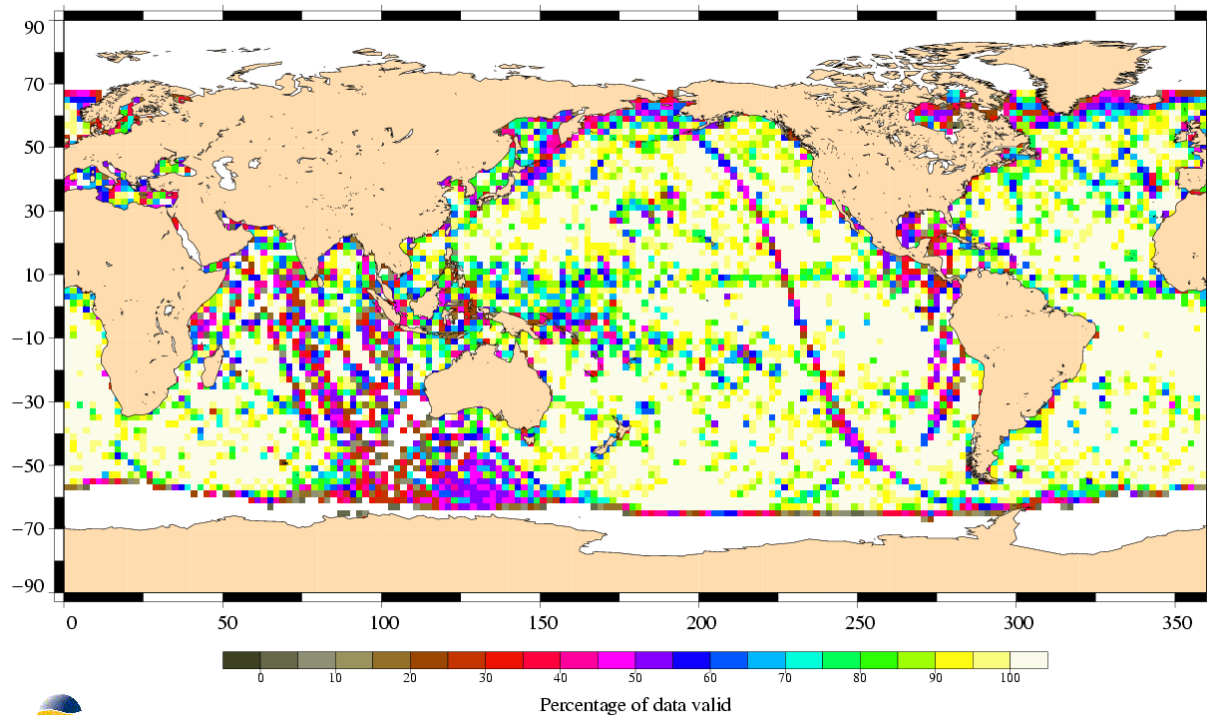
Valid data  
TOPEX/Poseidon Cycle 411 (10/11/2003 / 20/11/2003)



Edited measurements  
TOPEX Cycle 411 (10/11/2003 / 20/11/2003)

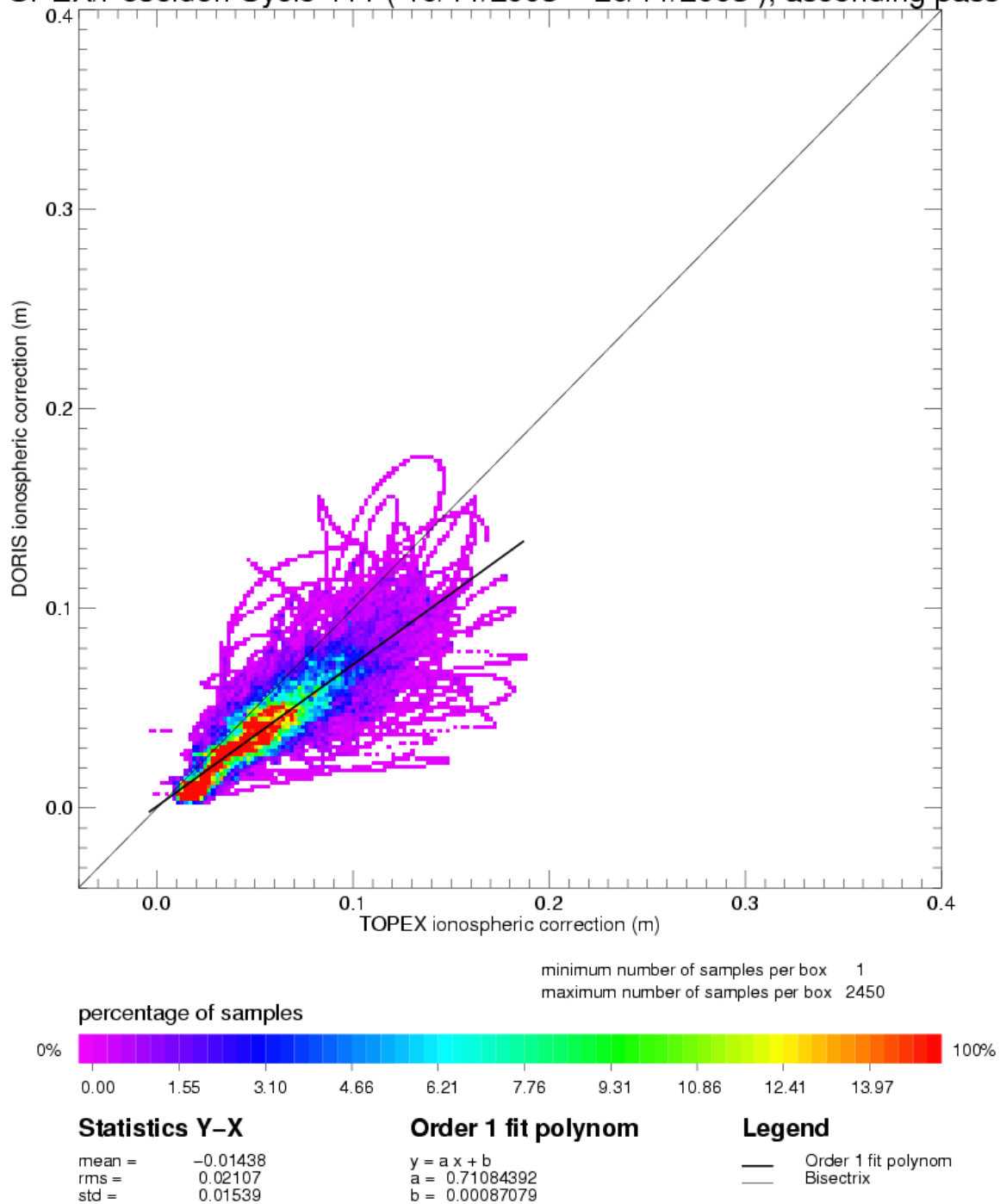


Percentage of valid data relative to the nominal pass  
TOPEX/Poseidon Cycle 411 (10/11/2003 / 20/11/2003)



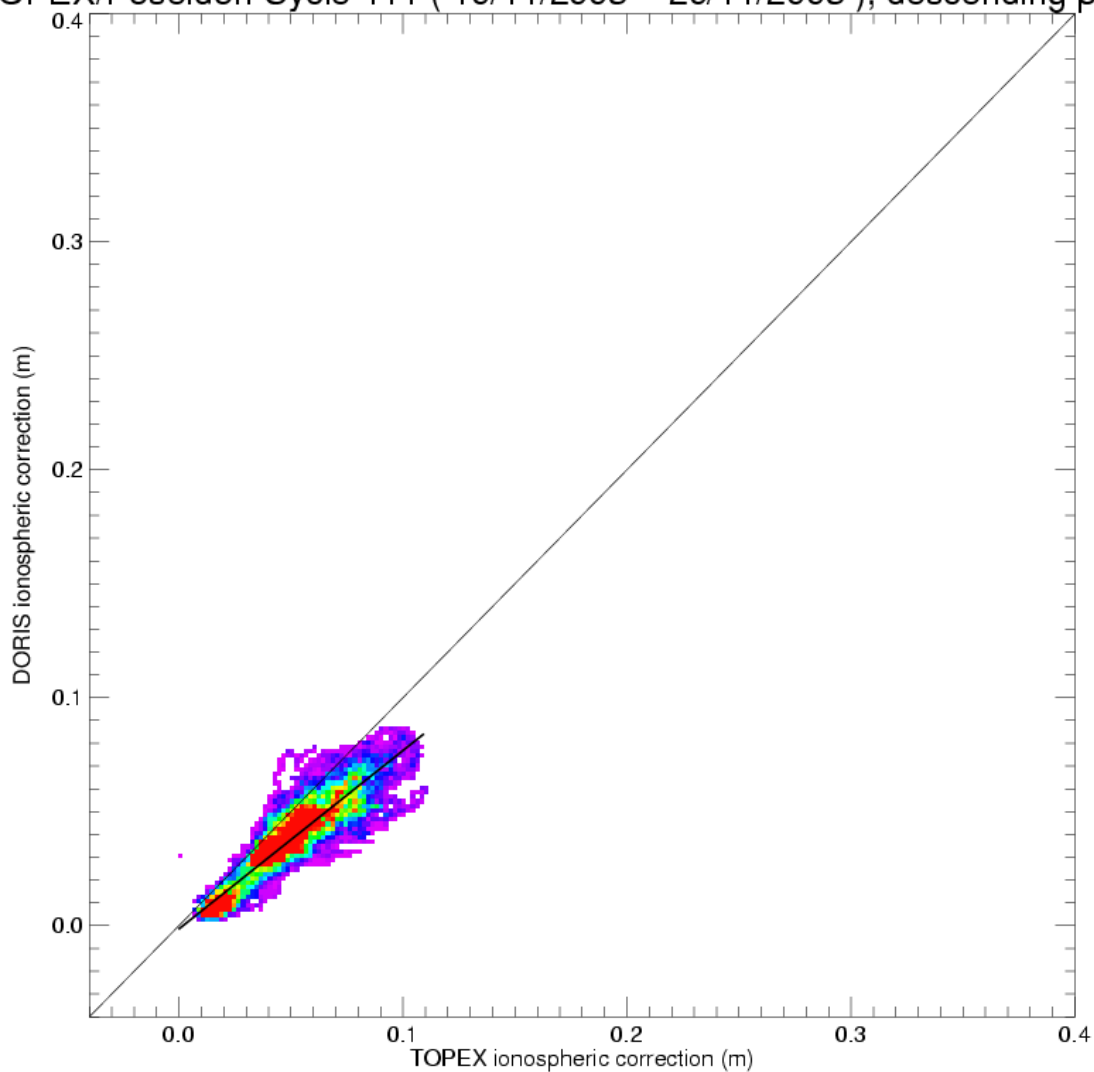
### 3.5 Ionospheric correction

TOPEX/Poseidon Cycle 411 ( 10/11/2003 – 20/11/2003 ), ascending passes

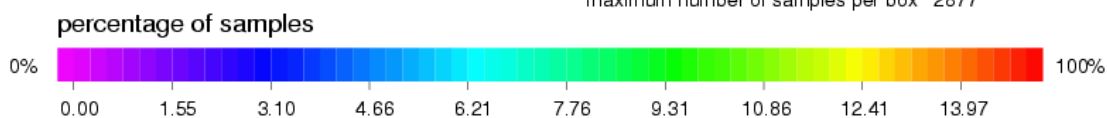




TOPEX/Poseidon Cycle 411 ( 10/11/2003 – 20/11/2003 ), descending passes



minimum number of samples per box 1  
 maximum number of samples per box 2877



**Statistics Y-X**

mean = -0.01171  
 rms = 0.01466  
 std = 0.00882

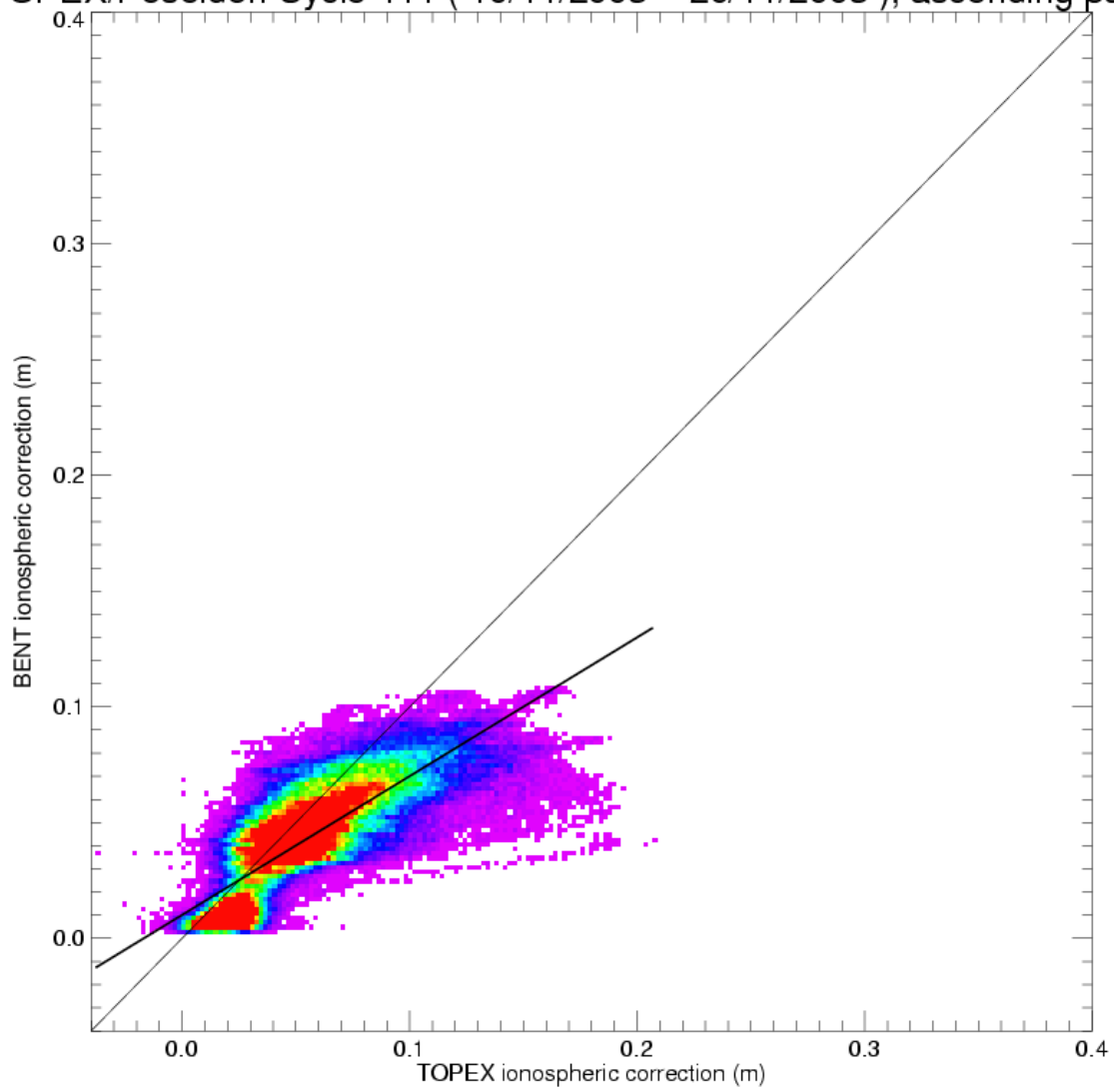
**Order 1 fit polynom**

$y = a x + b$   
 $a = 0.78267497$   
 $b = -0.00143842$

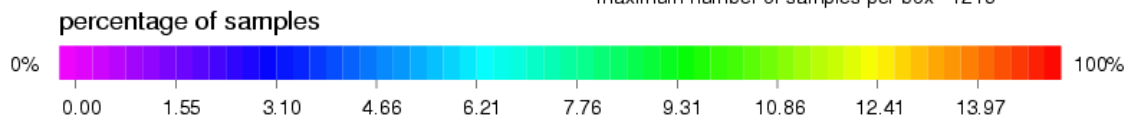
**Legend**

— Order 1 fit polynom  
 — Bisectrix

TOPEX/Poseidon Cycle 411 ( 10/11/2003 – 20/11/2003 ), ascending passes



minimum number of samples per box 1  
 maximum number of samples per box 1216



**Statistics Y-X**

mean = -0.01119  
 rms = 0.02157  
 std = 0.01845

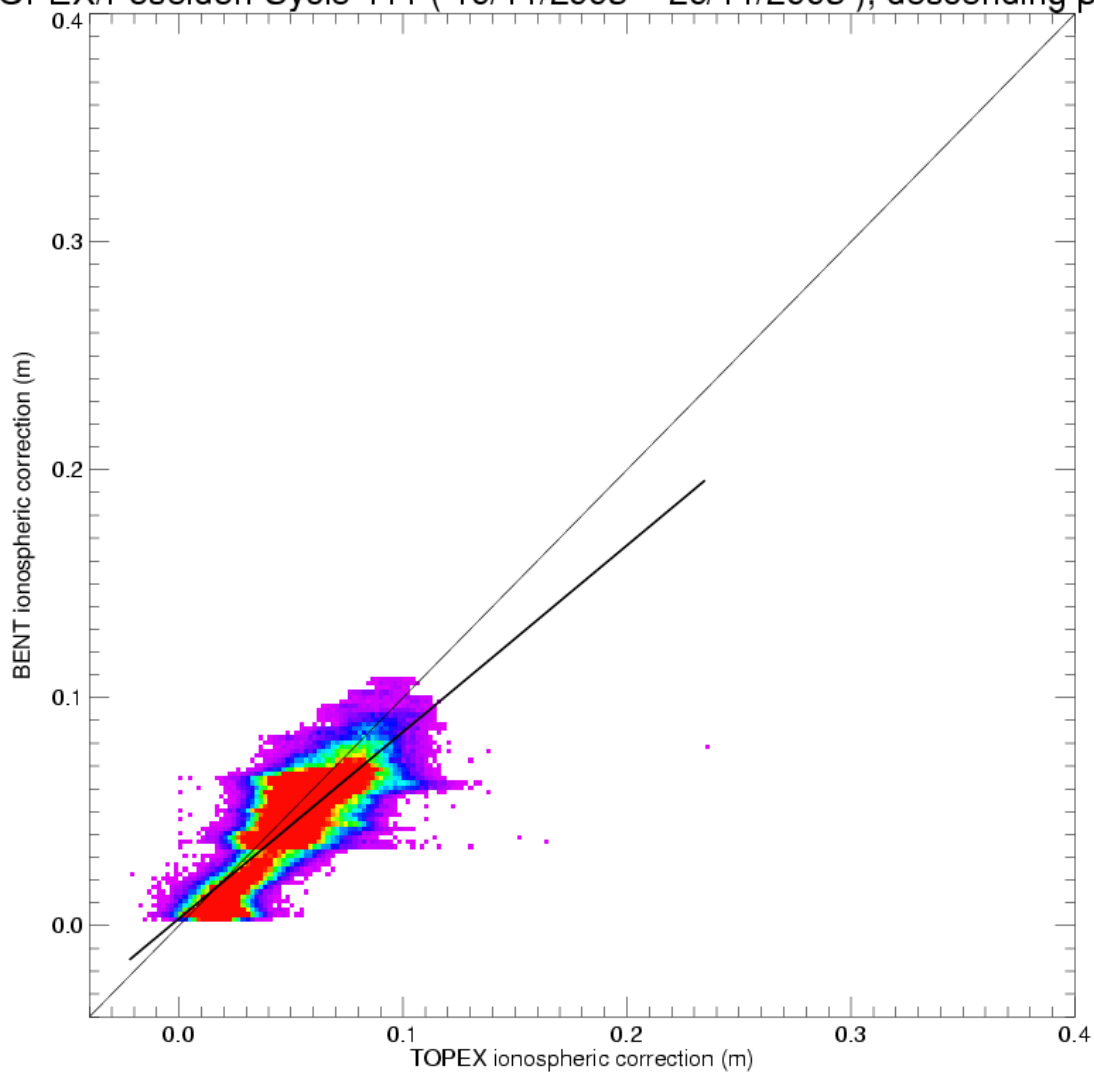
**Order 1 fit polynom**

$y = a x + b$   
 $a = 0.59949136$   
 $b = 0.01013158$

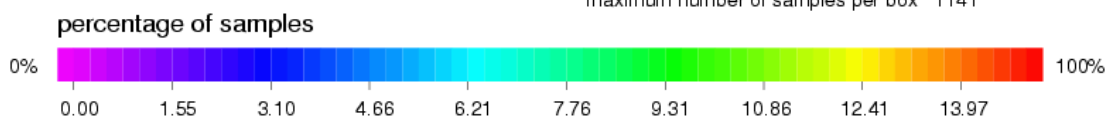
**Legend**

— Order 1 fit polynom  
 — Bisectrix

TOPEX/Poseidon Cycle 411 ( 10/11/2003 – 20/11/2003 ), descending passes



minimum number of samples per box 1  
 maximum number of samples per box 1141



**Statistics Y-X**

mean = -0.00556  
 rms = 0.01373  
 std = 0.01255

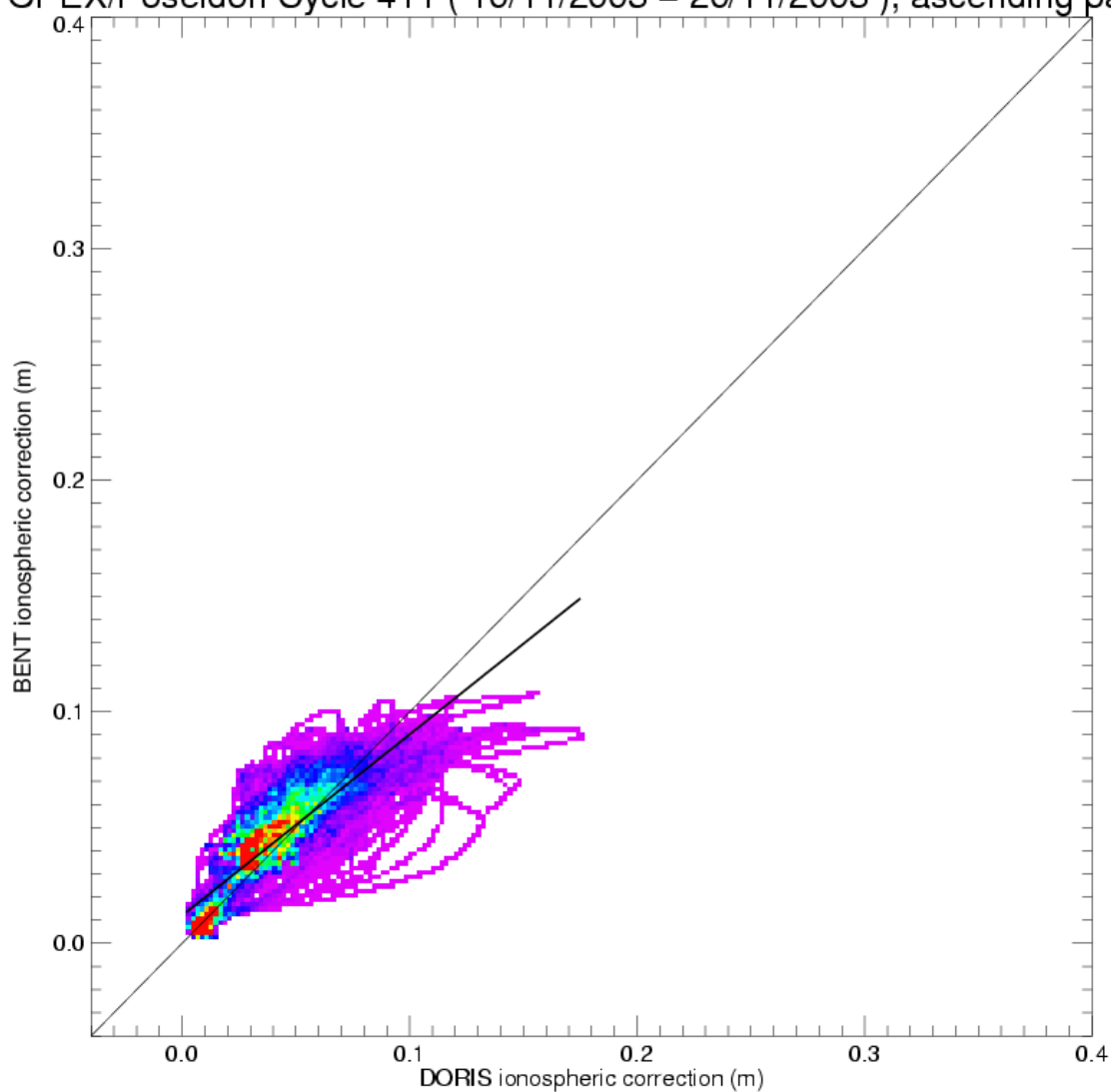
**Order 1 fit polynom**

$y = a x + b$   
 $a = 0.81871259$   
 $b = 0.00309717$

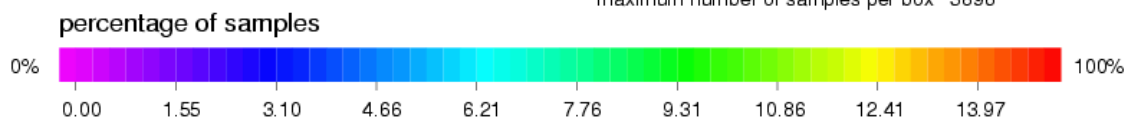
**Legend**

— Order 1 fit polynom  
 — Bisectrix

TOPEX/Poseidon Cycle 411 ( 10/11/2003 – 20/11/2003 ), ascending passes



minimum number of samples per box 1  
 maximum number of samples per box 3896



**Statistics Y-X**

mean = 0.00367  
 rms = 0.01384  
 std = 0.01335

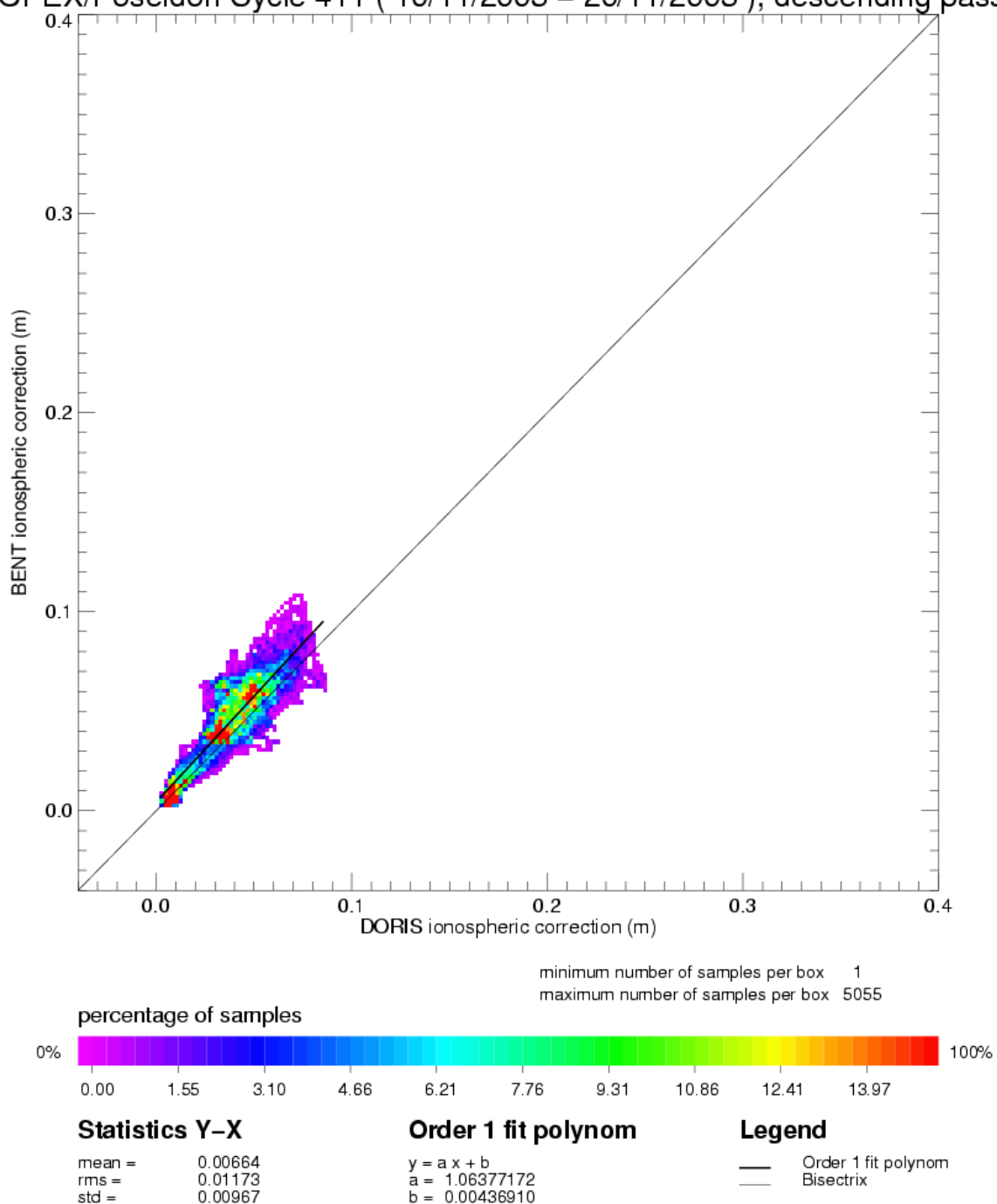
**Order 1 fit polynom**

$y = a x + b$   
 $a = 0.78270483$   
 $b = 0.01200919$

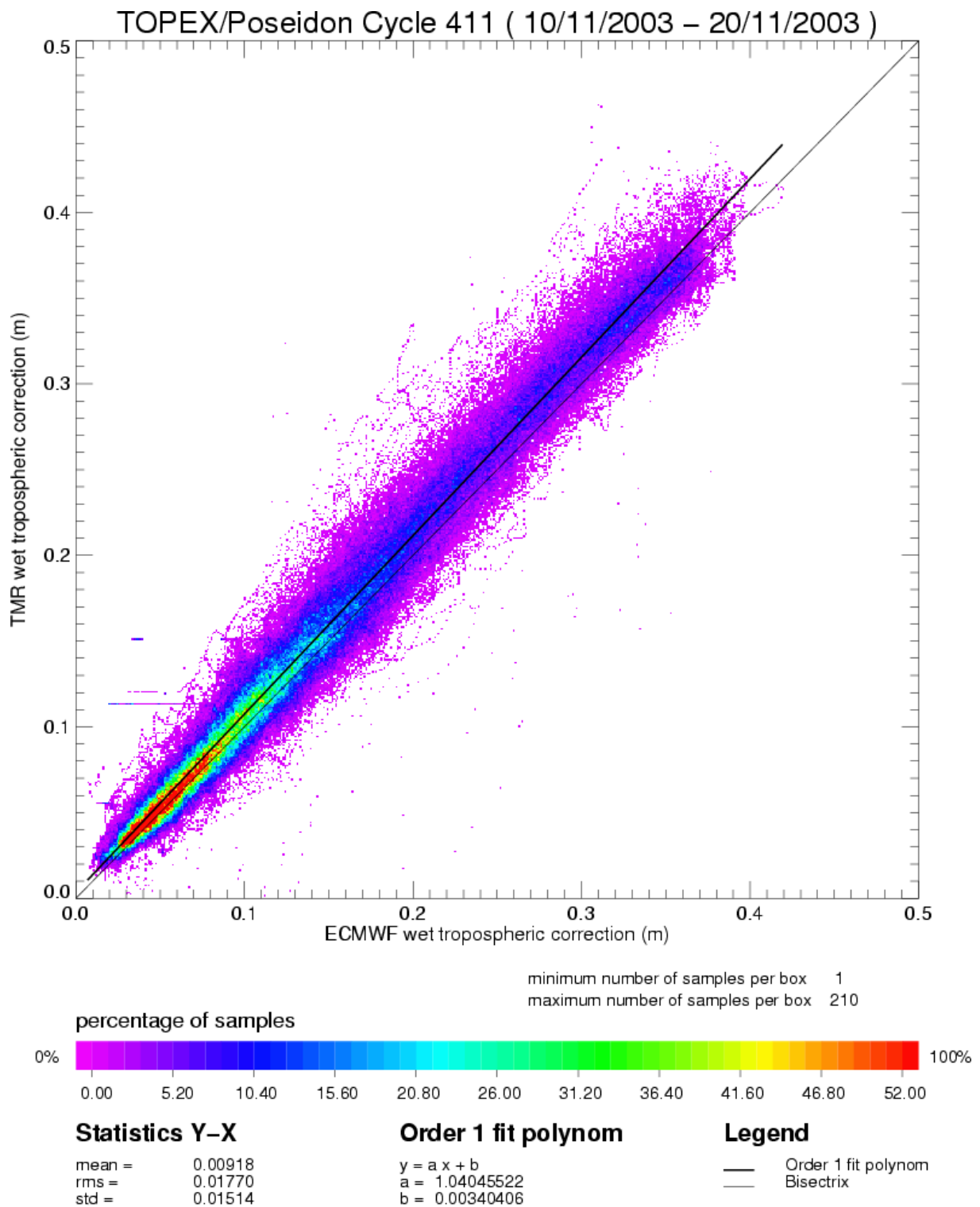
**Legend**

— Order 1 fit polynom  
 — Bisectrix

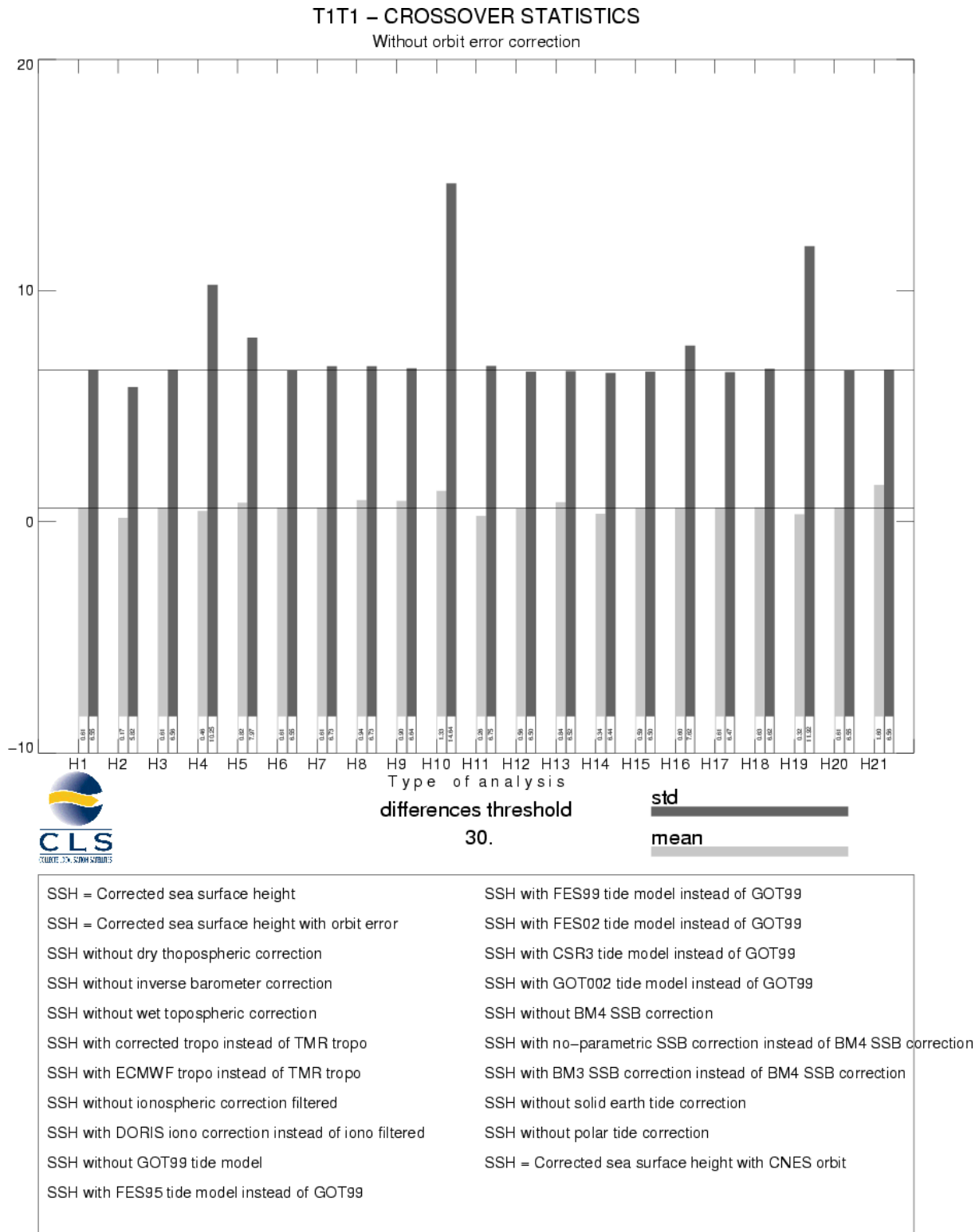
TOPEX/Poseidon Cycle 411 ( 10/11/2003 – 20/11/2003 ), descending passes



### 3.6 Wet tropospheric correction



### 3.7 Crossover statistics



### T1T1 – CROSSOVER STATISTICS

Without orbit error correction

SSH = Corrected sea surface height

#### RAPPEL DES SELECTIONS

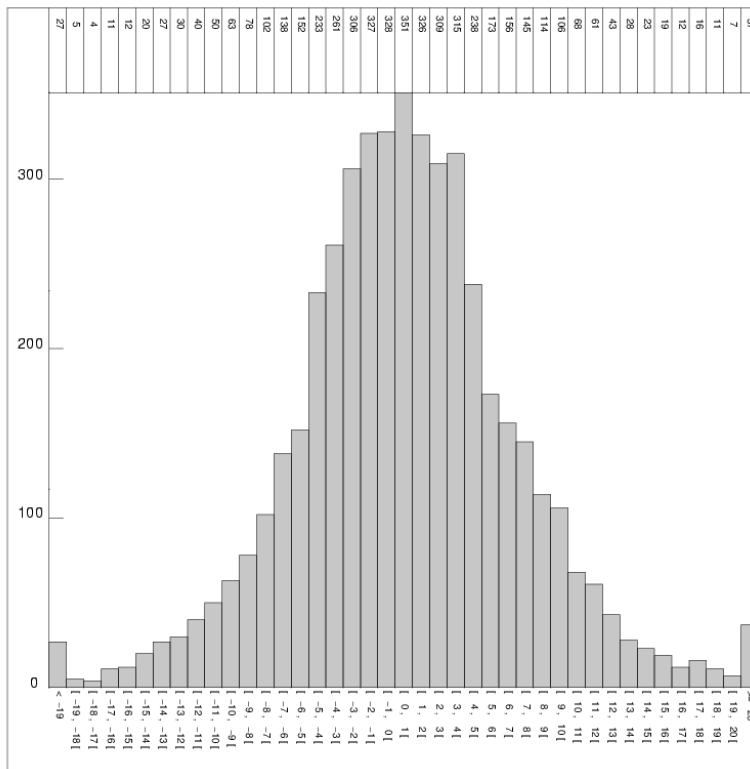
Type de points de croisement: T1T1  
 Zone géographique (deg): -90 / 90 , 0 / 360  
 Seuil sur les écarts d'analyse 0.00 (moy)  
 30.00 (seuil)  
 Selection(s) sur les champs :  
 CL Arc 1 :=INTERP\_SPLN  
 CL Arc 2 :=INTERP\_SPLN  
 Seuil Min +: 0.0000000  
 Seuil Max : 0.0000000

Selection(s) sur les écarts :  
 Aucune

#### RESULTATS STATISTIQUES

Valeur minimale : -29.1900  
 Valeur maximale : 29.5200  
 Différence Max – Min: 58.7100  
 Nombre de points lus: 4879  
 Nombre de points selectionnes: 4772  
 Moyenne : 0.609109  
 Ecart-type : 6.54925  
 Moyenne Quadratique : 6.57752

CLS Space Oceanography Division



### T1T1 – CROSSOVER STATISTICS

With orbit error correction

SSH = Corrected sea surface height

#### RAPPEL DES SELECTIONS

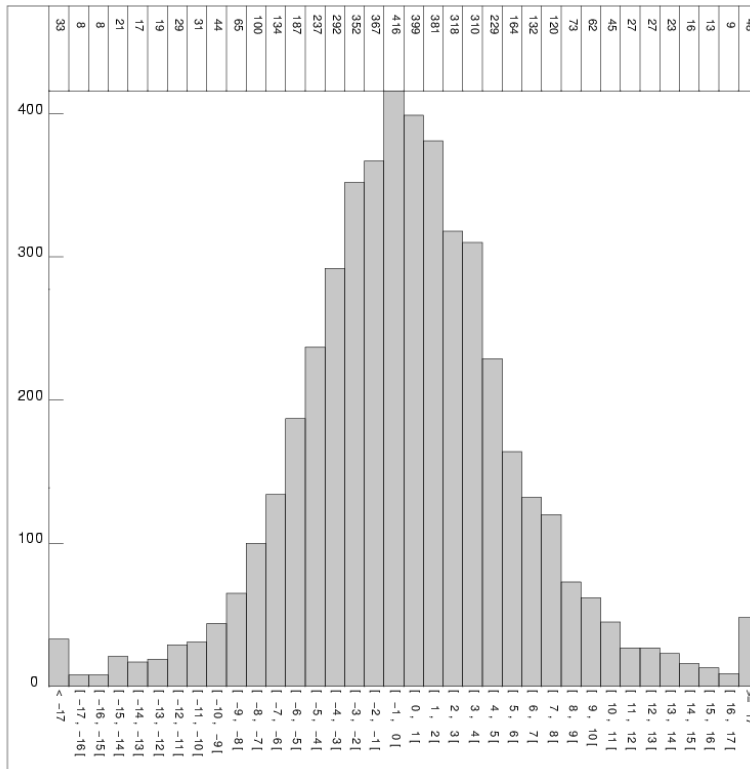
Type de points de croisement: T1T1  
 Zone géographique (deg): -90 / 90 , 0 / 360  
 Seuil sur les écarts d'analyse 0.00 (moy)  
 30.00 (seuil)  
 Selection(s) sur les champs :  
 CL Arc 1 :=INTERP\_SPLN  
 CL Arc 2 :=INTERP\_SPLN  
 Seuil Min +: 0.0000000  
 Seuil Max : 0.0000000

Selection(s) sur les écarts :  
 Aucune

#### RESULTATS STATISTIQUES

Valeur minimale : -29.8400  
 Valeur maximale : 29.9700  
 Différence Max – Min: 59.8100  
 Nombre de points lus: 4879  
 Nombre de points selectionnes: 4756  
 Moyenne : 0.171299  
 Ecart-type : 5.82263  
 Moyenne Quadratique : 5.82515

CLS Space Oceanography Division





**T1T1 – CROSSOVER STATISTICS**  
**SSH, BATHY < -1000 m, VAR\_OCE < 20 cm, LAT [-50°, +50]**  
**SSH = Corrected sea surface height before orbit error**

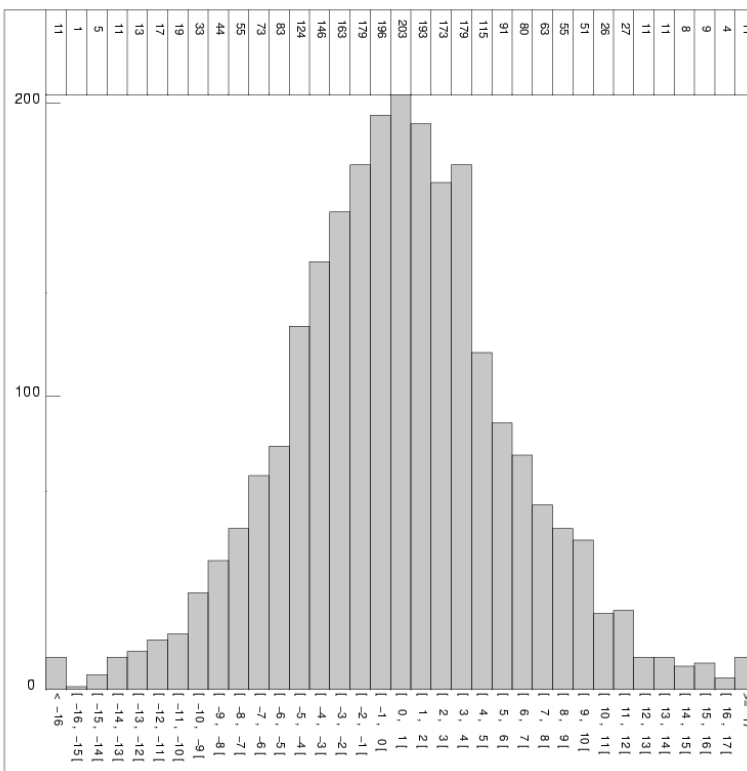
**RAPPEL DES SELECTIONS**

Type de points de croisement: T1T1  
 Zone géographique (deg): -50 / 50 , 0 / 360  
 Seuil sur les écarts d'analyse : aucun  
 Selection(s) sur les champs :  
 CL Arc 1 :=BATHY  
 CL Arc 2 :=BATHY  
 Seuil Min : aucun  
 Seuil Max : -100000.00  
 CL Arc 1 :=VAR\_OCE  
 CL Arc 2 :=VAR\_OCE  
 Seuil Min : aucun  
 Seuil Max : 20.000000  
 [...]  
 Selection(s) sur les écarts :  
 Aucune

**RESULTATS STATISTIQUES**

Valeur minimale : -30.9700  
 Valeur maximale : 30.5400  
 Différence Max – Min: 61.5100  
 Nombre de points lus: 2741  
 Nombre de points selectionnes: 2483  
 Moyenne : 0.366359  
 Ecart-type : 5.65780  
 Moyenne Quadratique : 5.66965

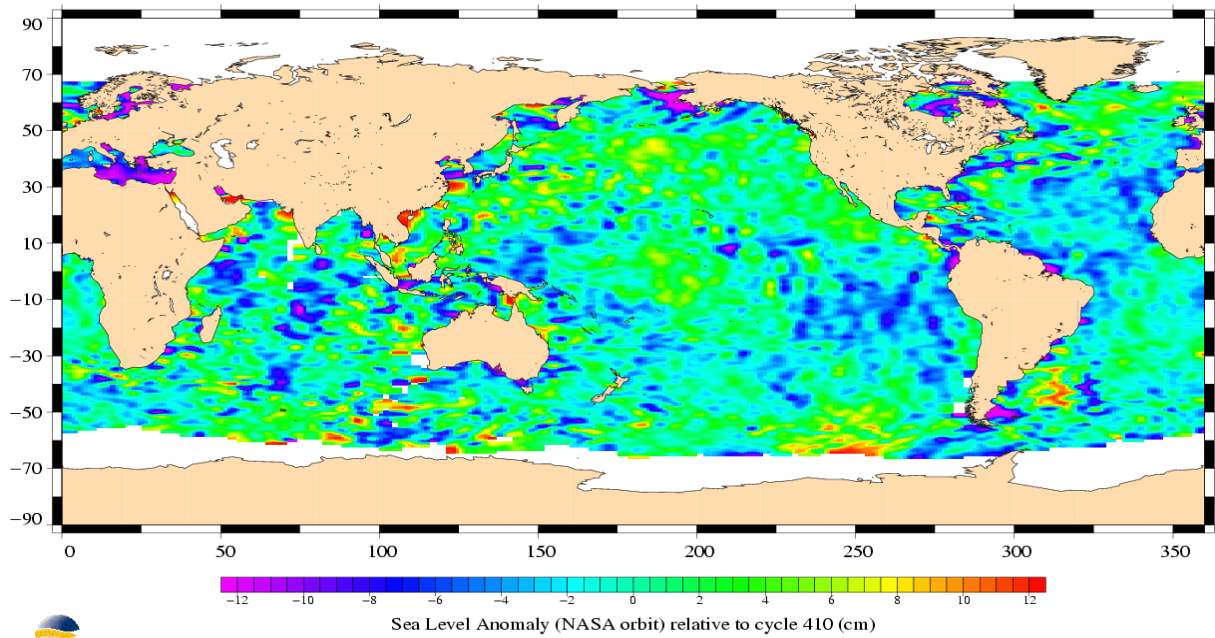
*CLS Space Oceanography Division*



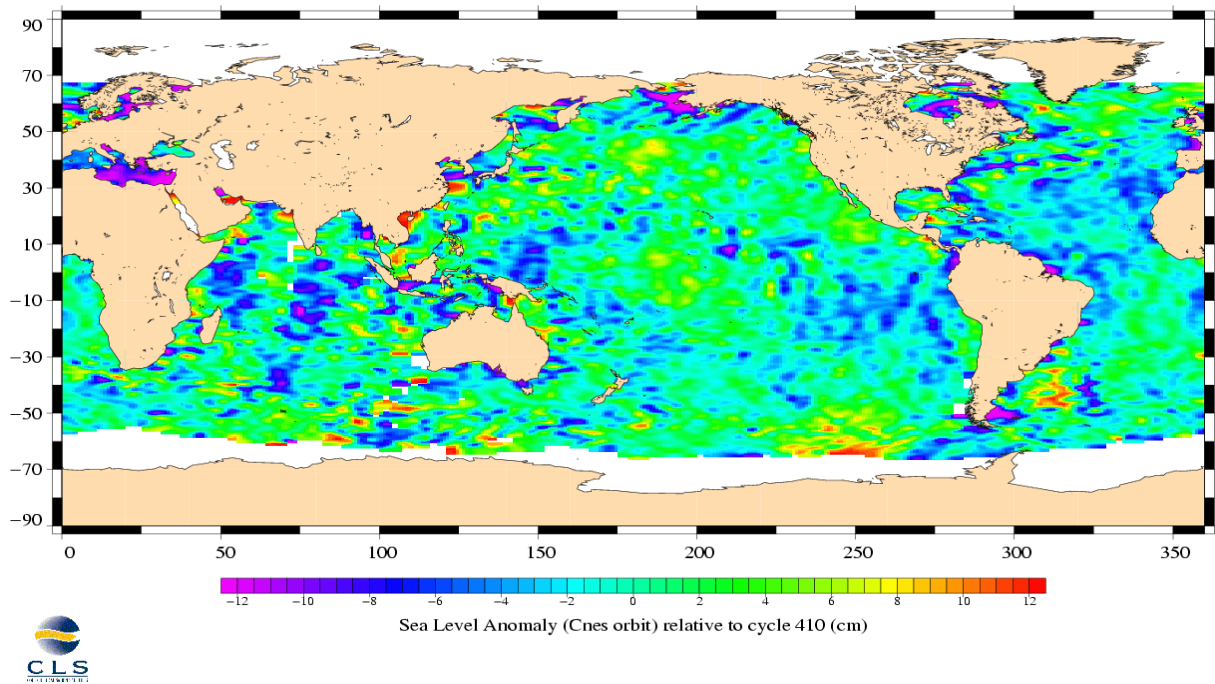
### 3.8 SSH variability

#### 3.8.1 Sea Level Anomaly

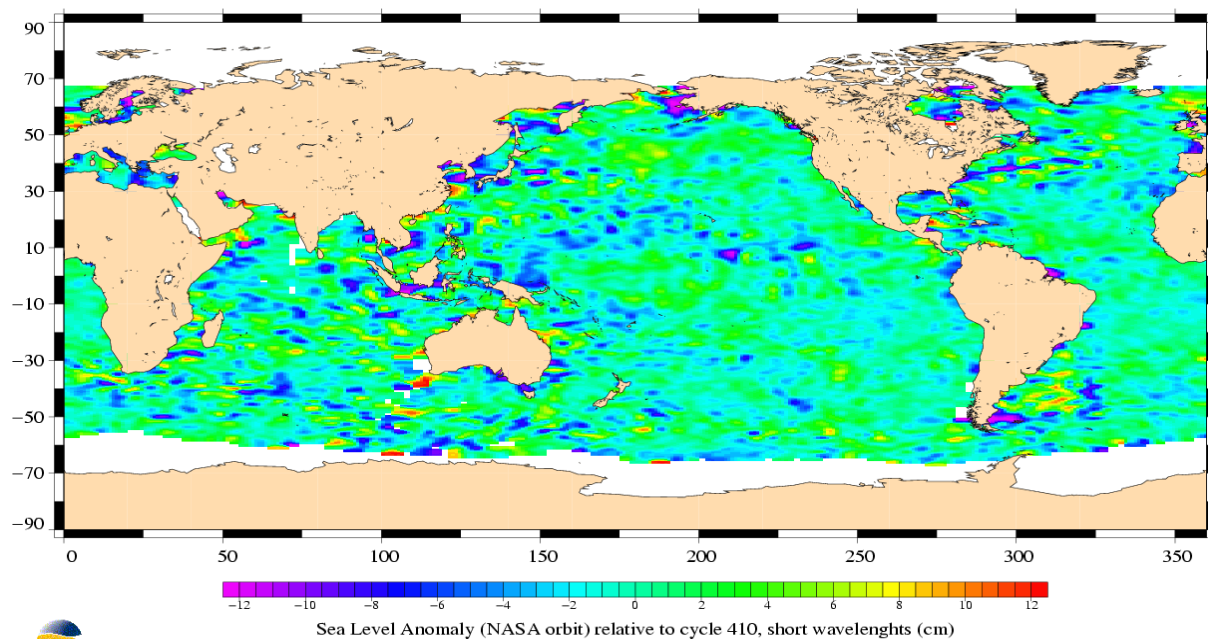
TOPEX/Poseidon, cycle 411  
Period : 10/11/2003 – 20/11/2003



TOPEX/Poseidon, cycle 411  
Period : 10/11/2003 – 20/11/2003



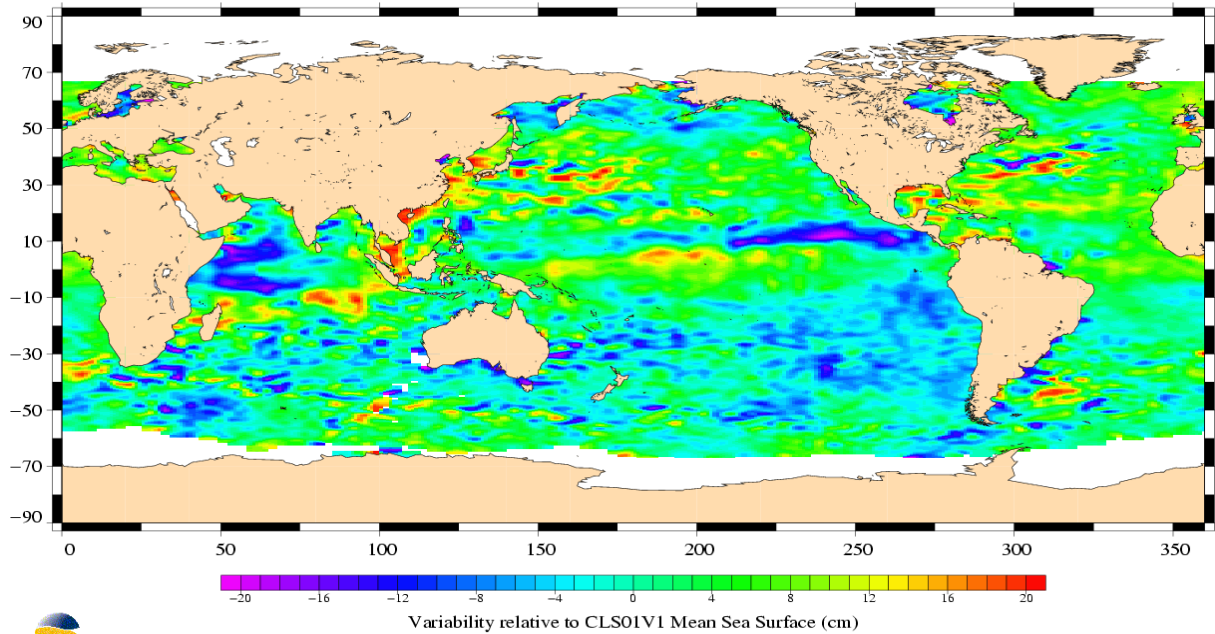
TOPEX/Poseidon, cycle 411  
Period : 10/11/2003 – 20/11/2003



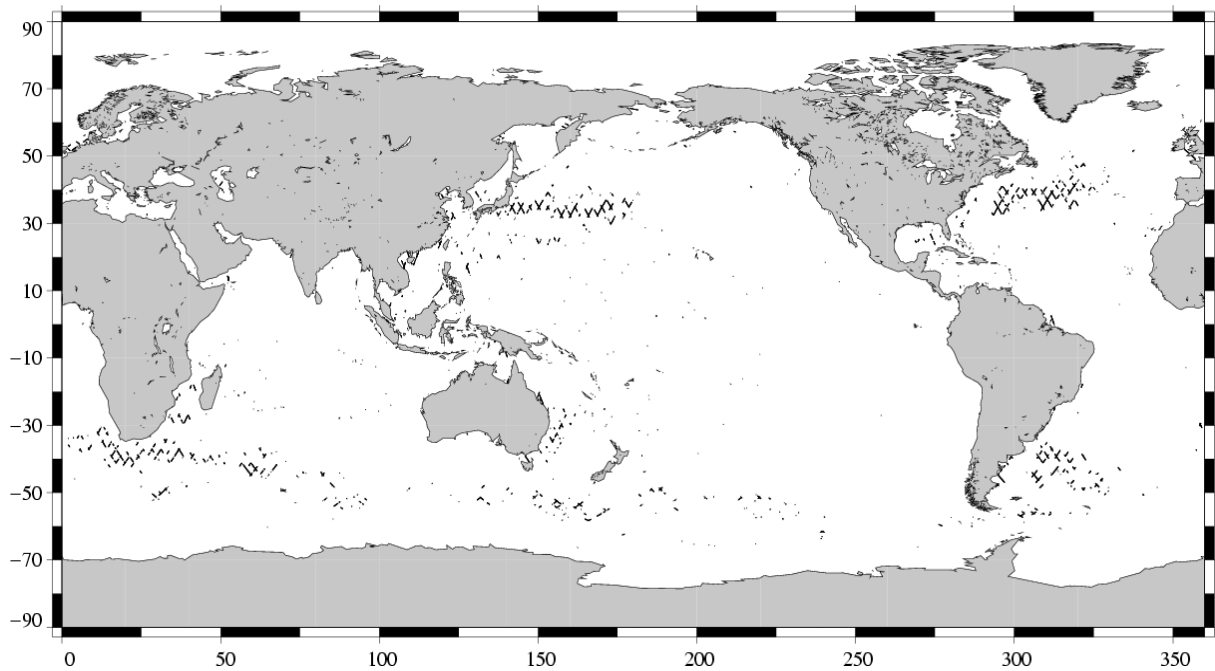
### 3.8.2 Comparison to a precise Mean Sea Surface

The CLS (2001) MSS model is used as a reference to compute SLA. The two following maps respectively show the map of Topex SLA relative to the MSS and differences higher than a 30 cm threshold (after centering the data). The latter figure shows that higher differences are located in high ocean variability areas, as expected.

TOPEX/Poseidon, cycle 411  
Period : 10/11/2003 – 20/11/2003

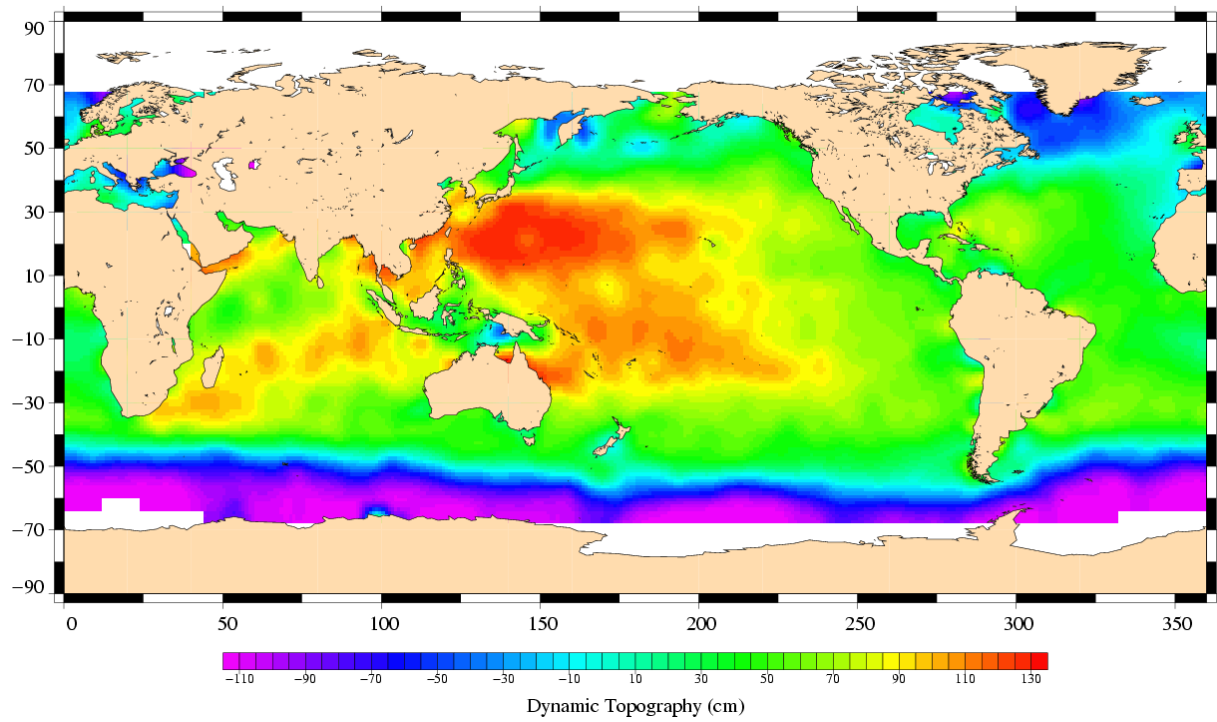


(SSH - MSS) differences greater than 0.3 m  
TOPEX/Poseidon Cycle 411 (10/11/2003 / 20/11/2003)



### 3.9 Dynamic topography

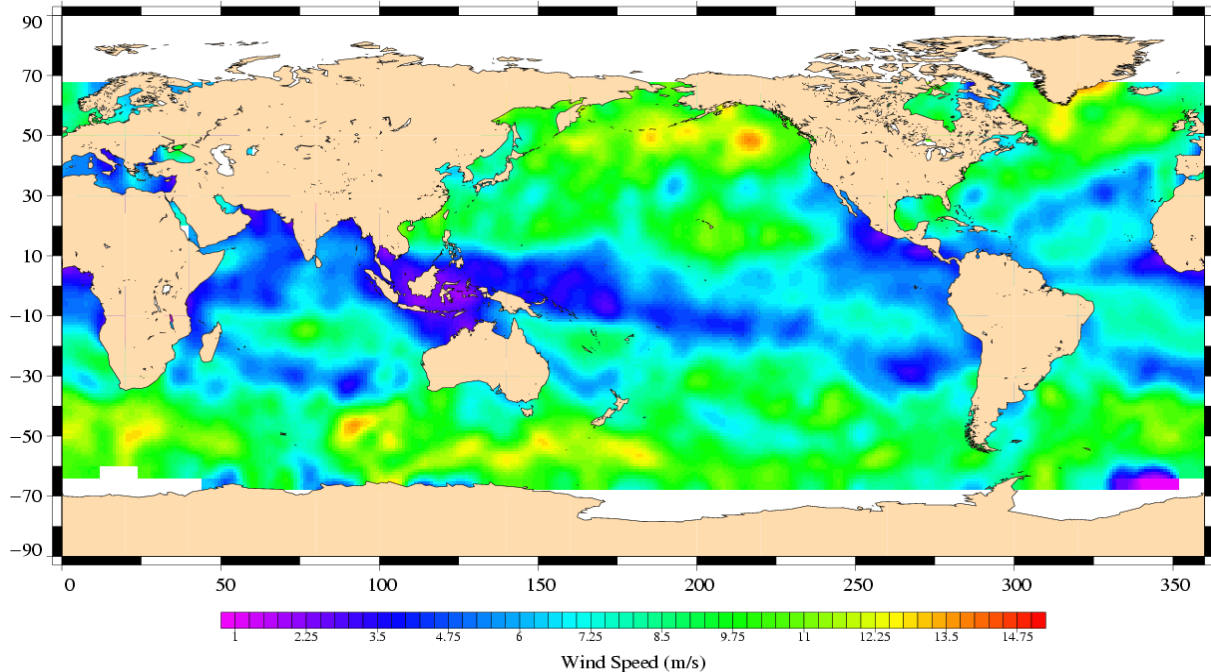
TOPEX/Poseidon, cycle 411  
Period : 10/11/2003 – 20/11/2003



### 3.10 Wind and wave maps

These two figures show wind and wave estimations derived from 10 days of altimeter measurements.

TOPEX/Poseidon, cycle 411  
Period : 10/11/2003 – 20/11/2003



TOPEX/Poseidon, cycle 411  
Period : 10/11/2003 – 20/11/2003

